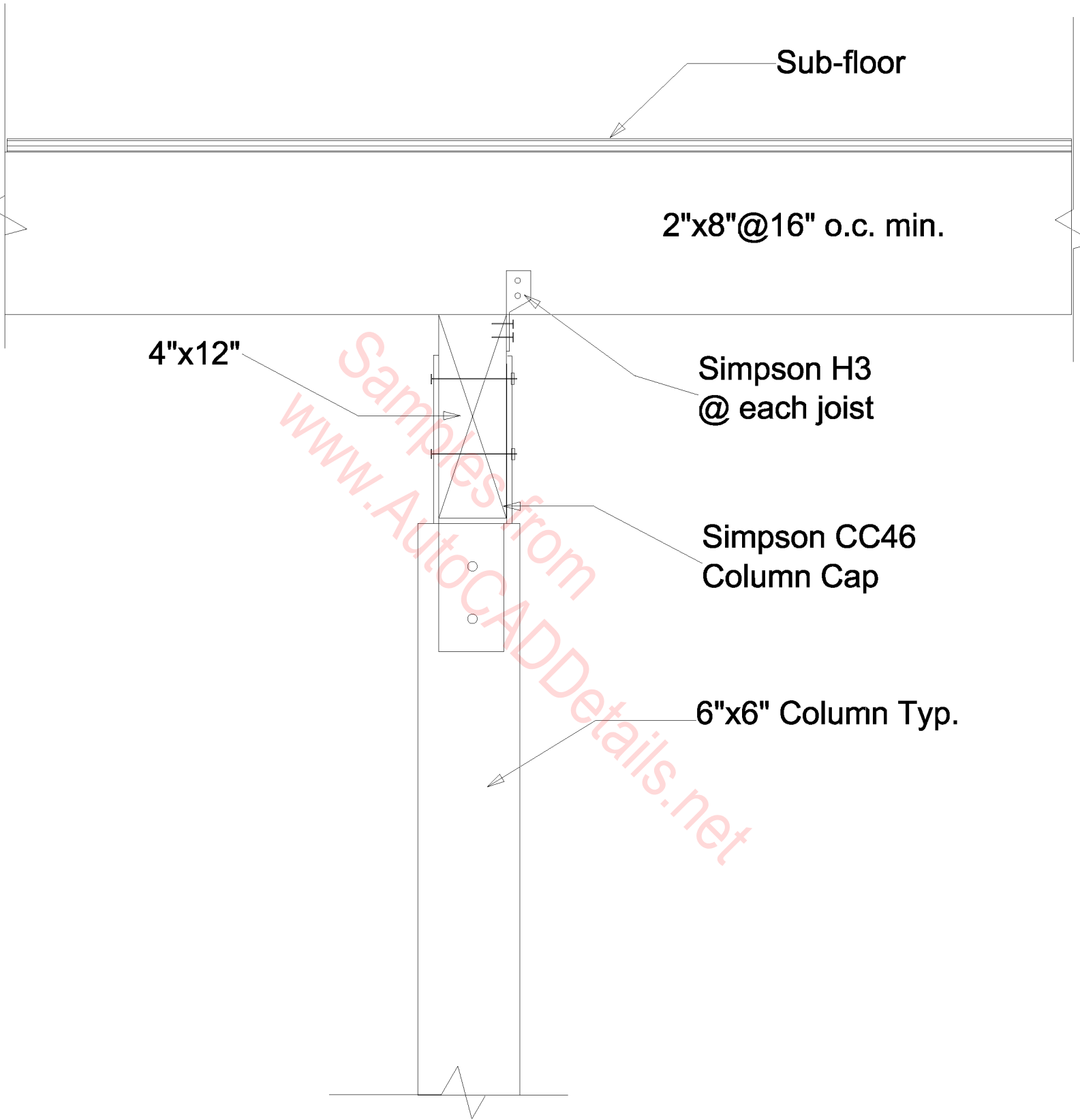
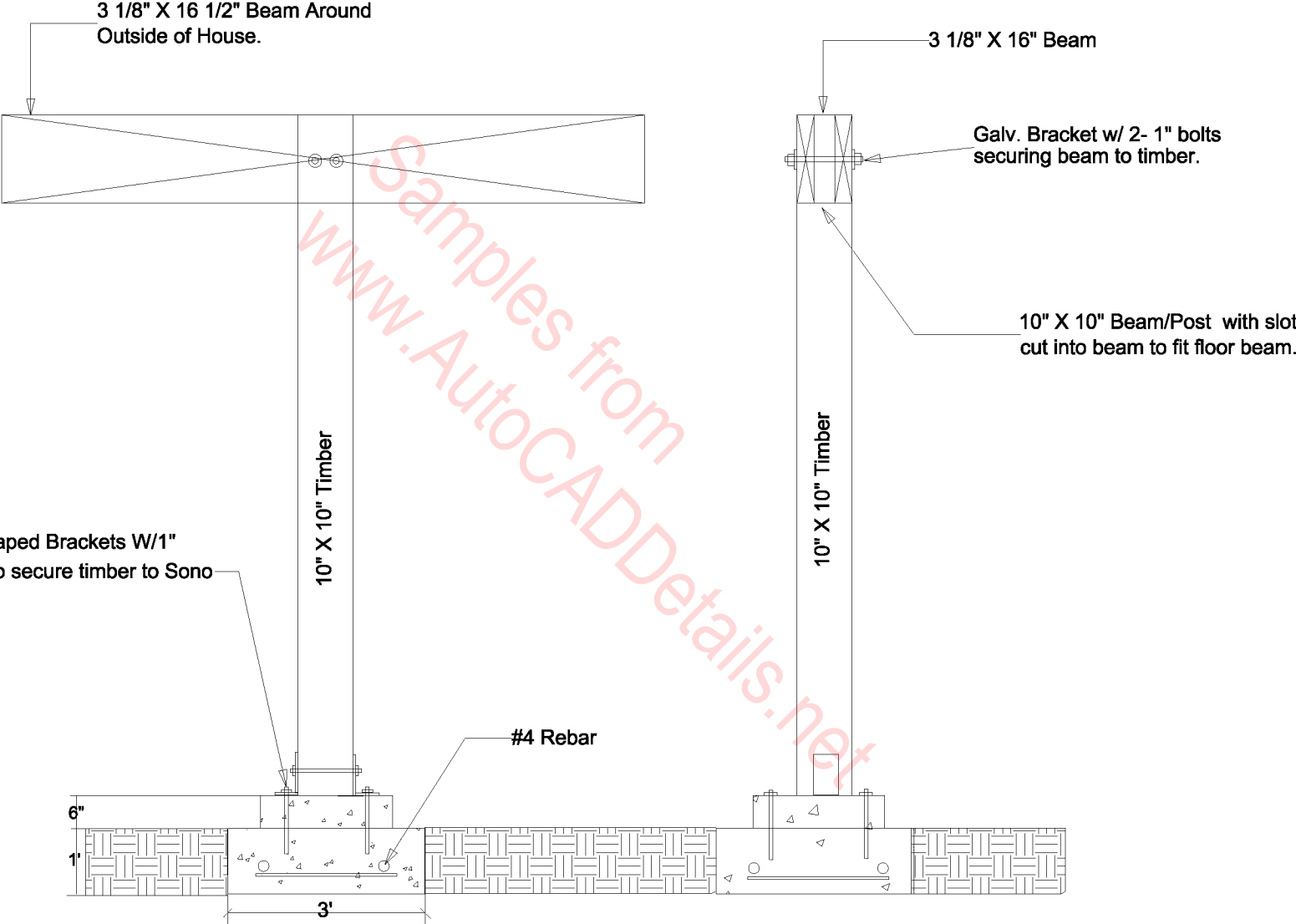


Column Detail @ Footing

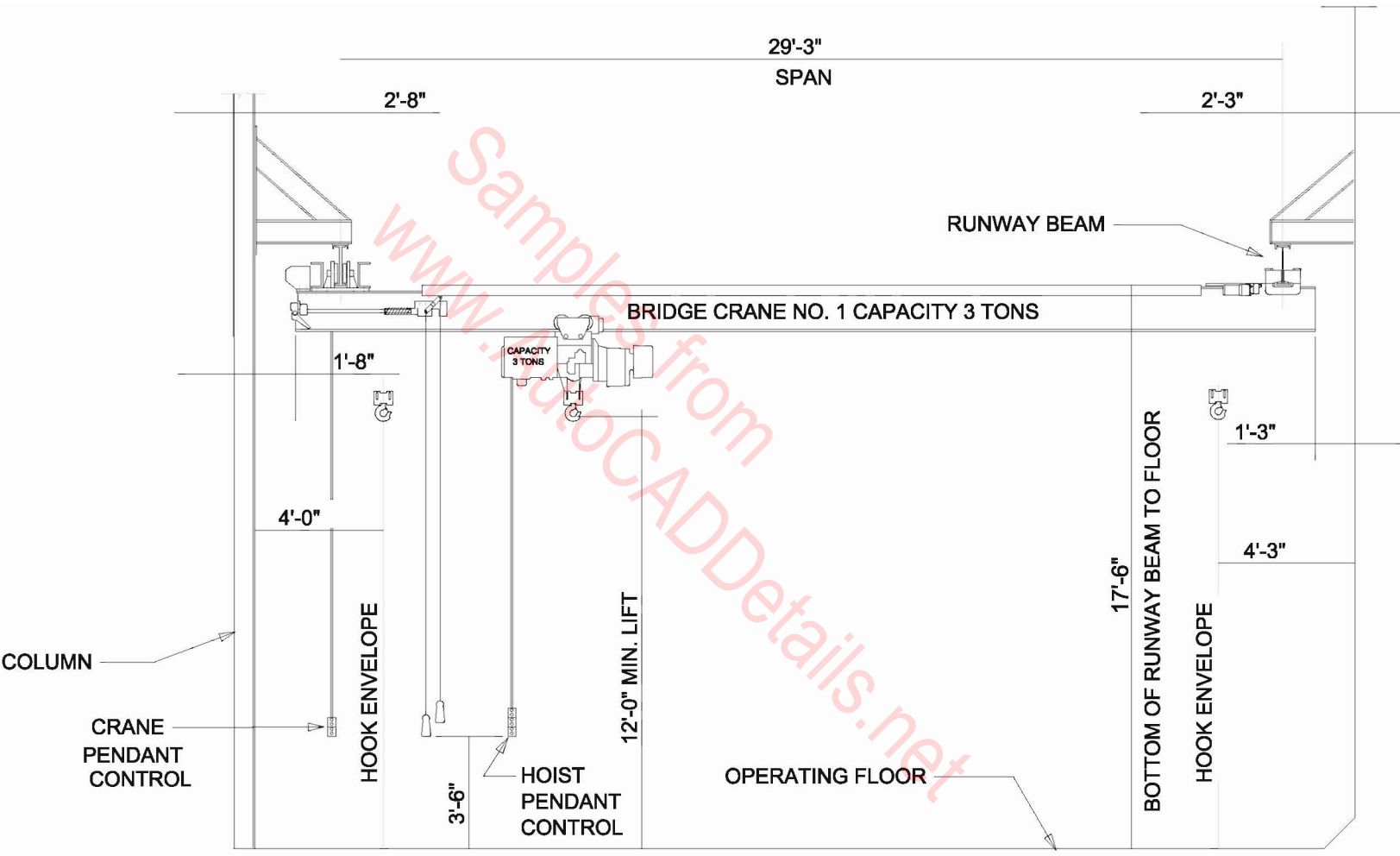


Detail At Top of Column

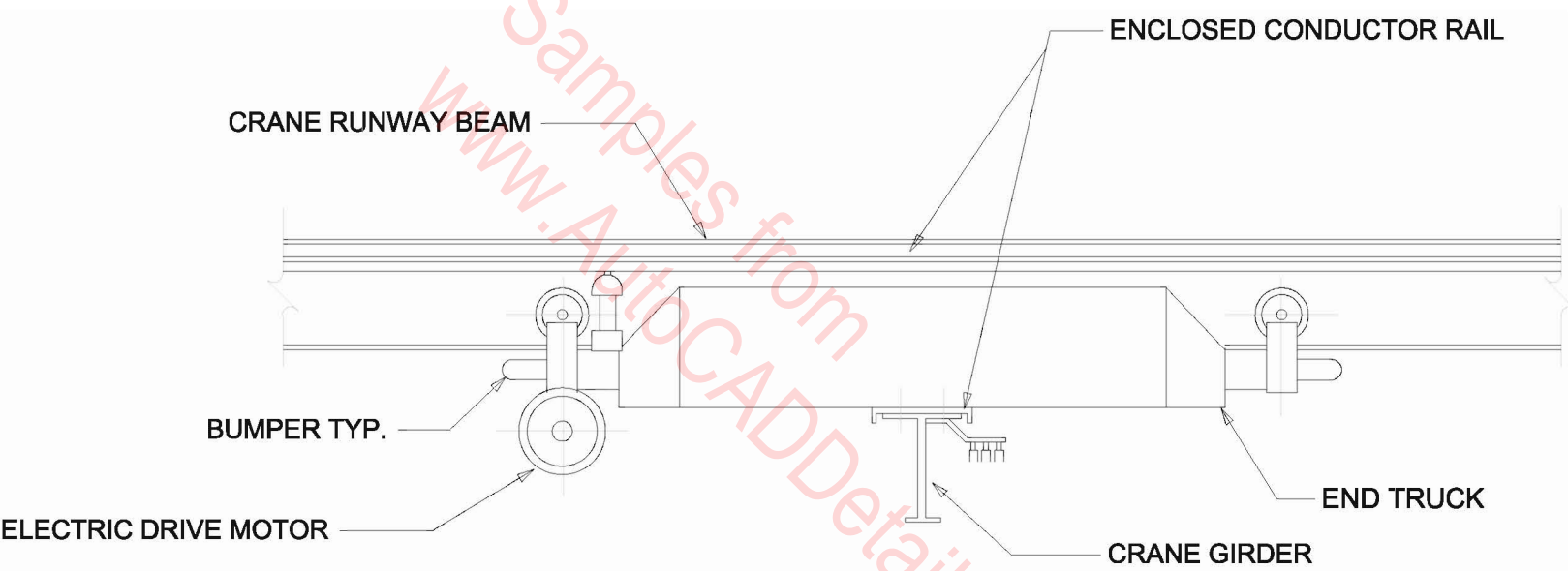
END VIEW



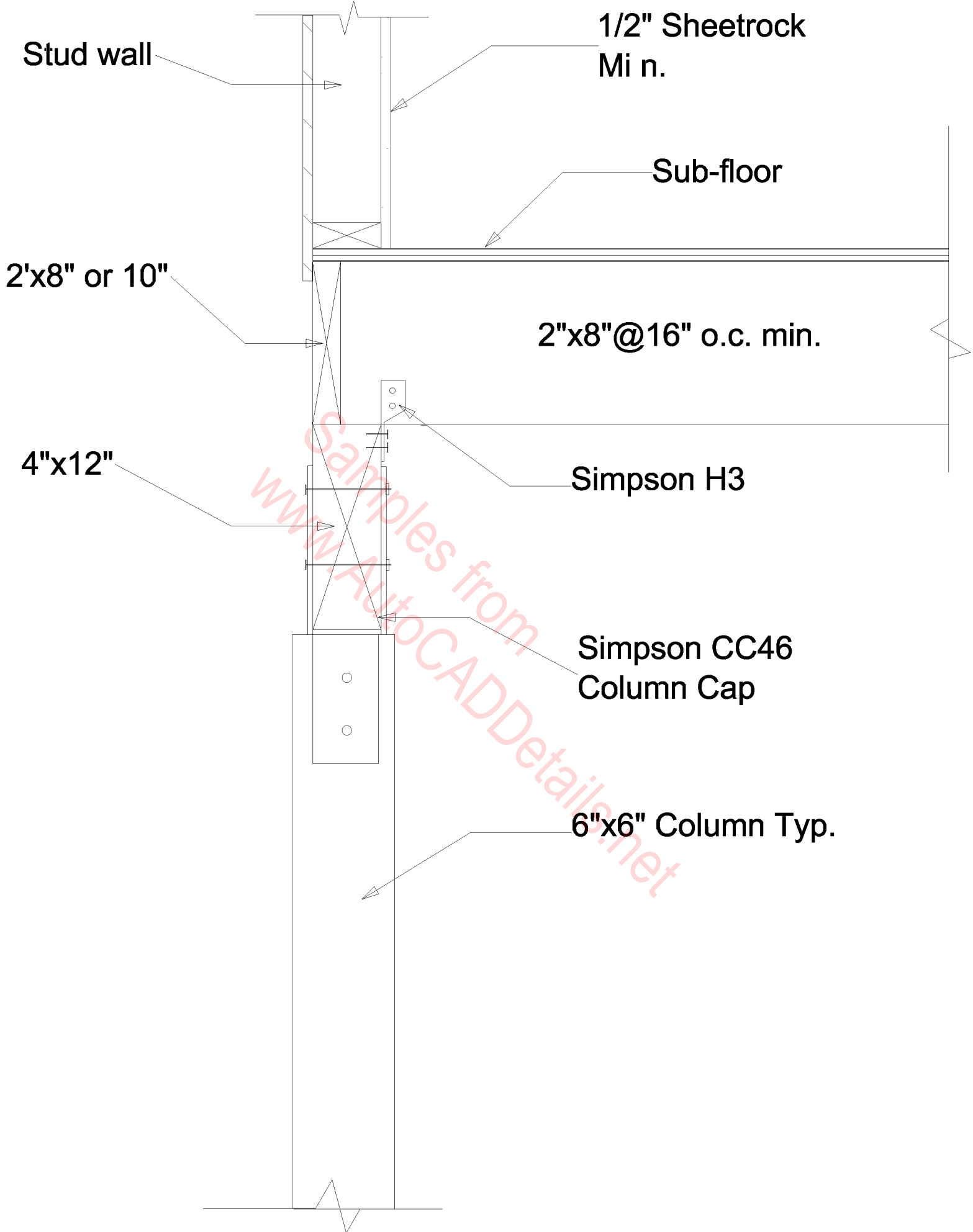
Concrete Pile W/Sono (Concrete) Tub & Timber



CRANE CLEARANCE DIAGRAM



CRANE END TRUCK ARRANGEMENT



Detail At Top of Column

#5's @16" O.C.
Each Way

#4 Dowels @ 32" O.C.
(30"x30")

WWF 6X6 -1010

NOTE: 8" Concrete Blocks are shown but wooden wall can be installed using mudsill and 3/4" anchor bolt 24" O.C.

2-#5's

2-#5's

8" Concrete Wall or
Concrete Blocks

1-#5's @ 16" O.C.
Each Way

Elevator Pit Depth -- Verify w/MFR.

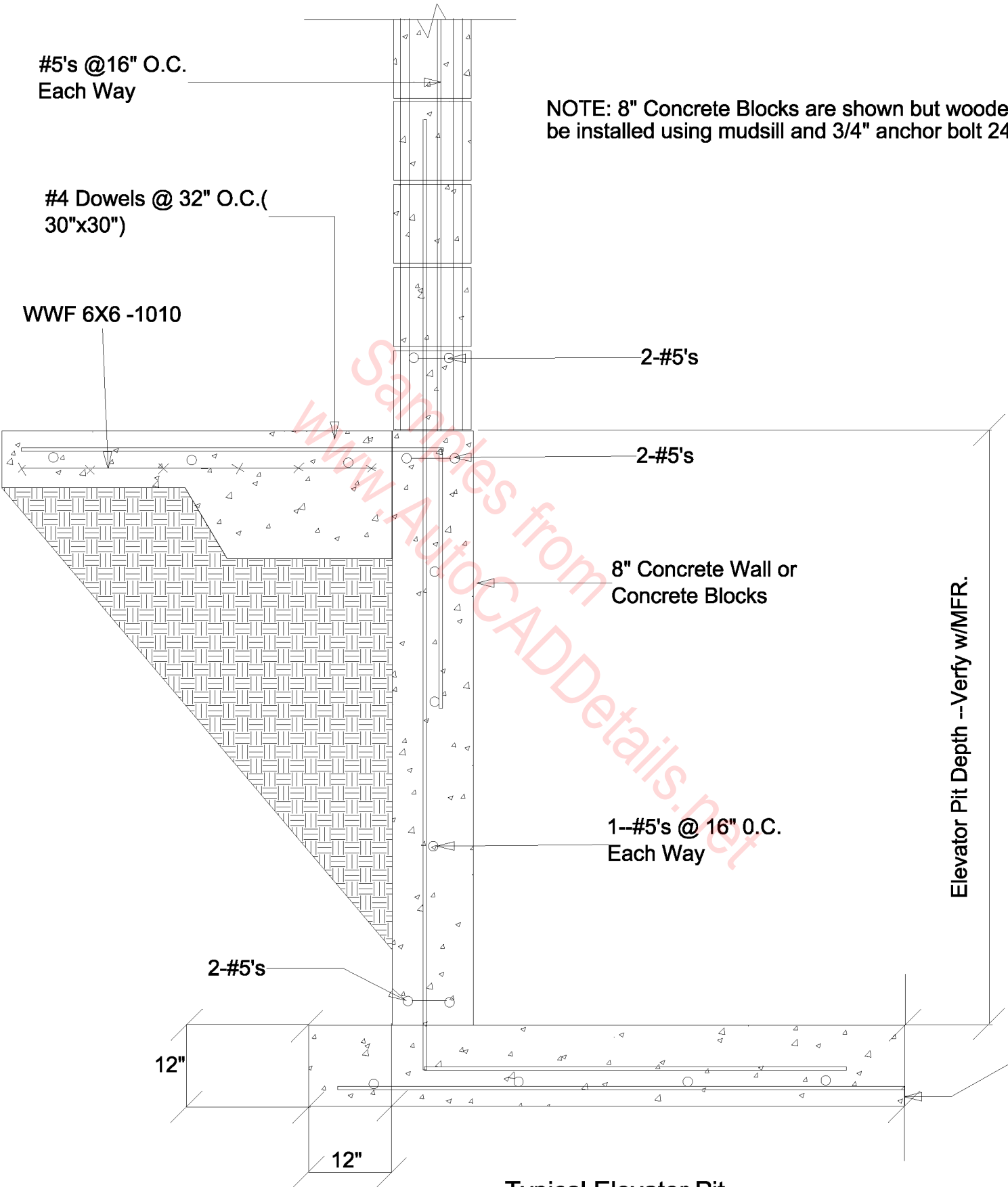
2-#5's

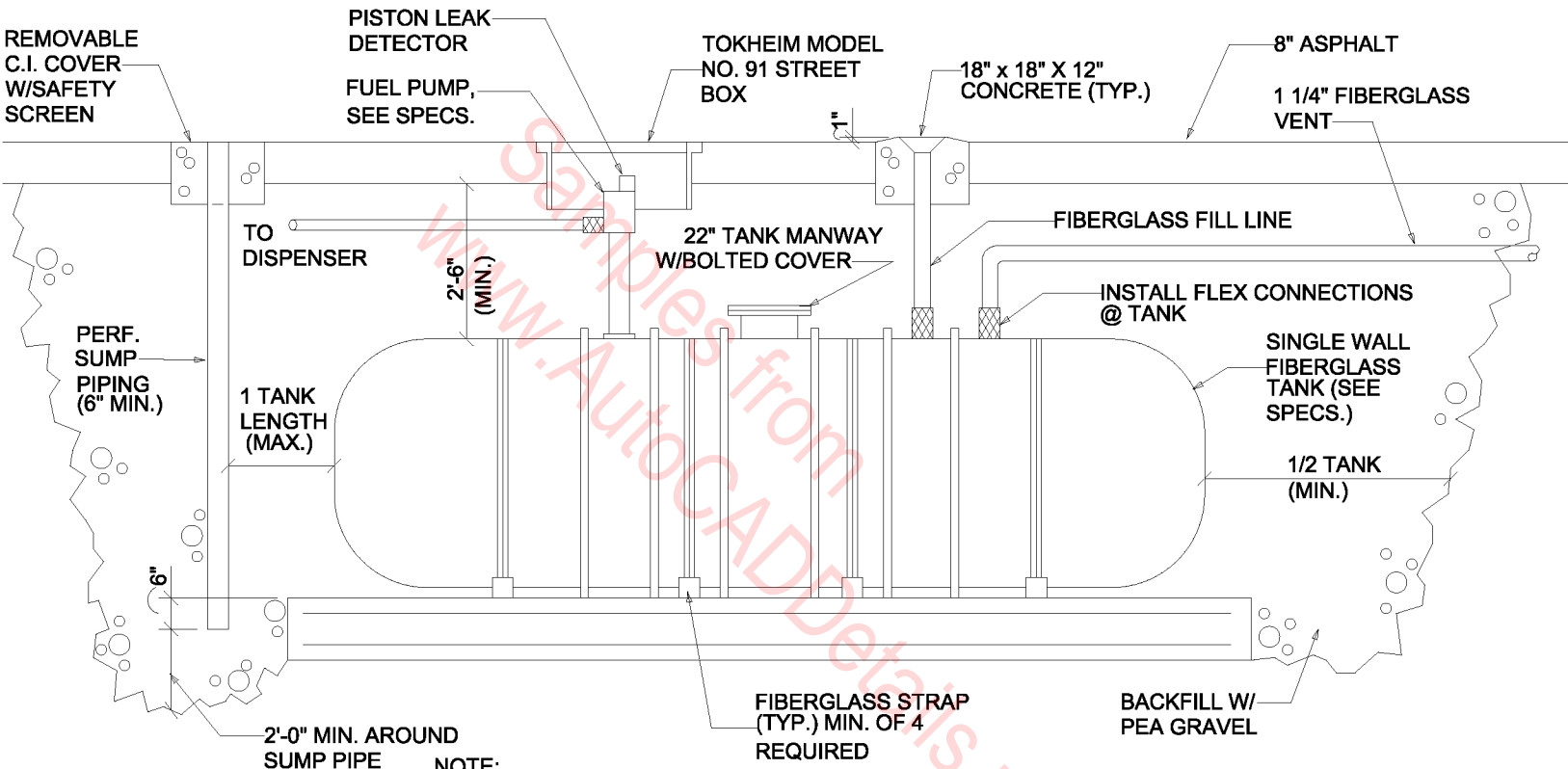
12"

12"

3" Clr.

Typical Elevator Pit

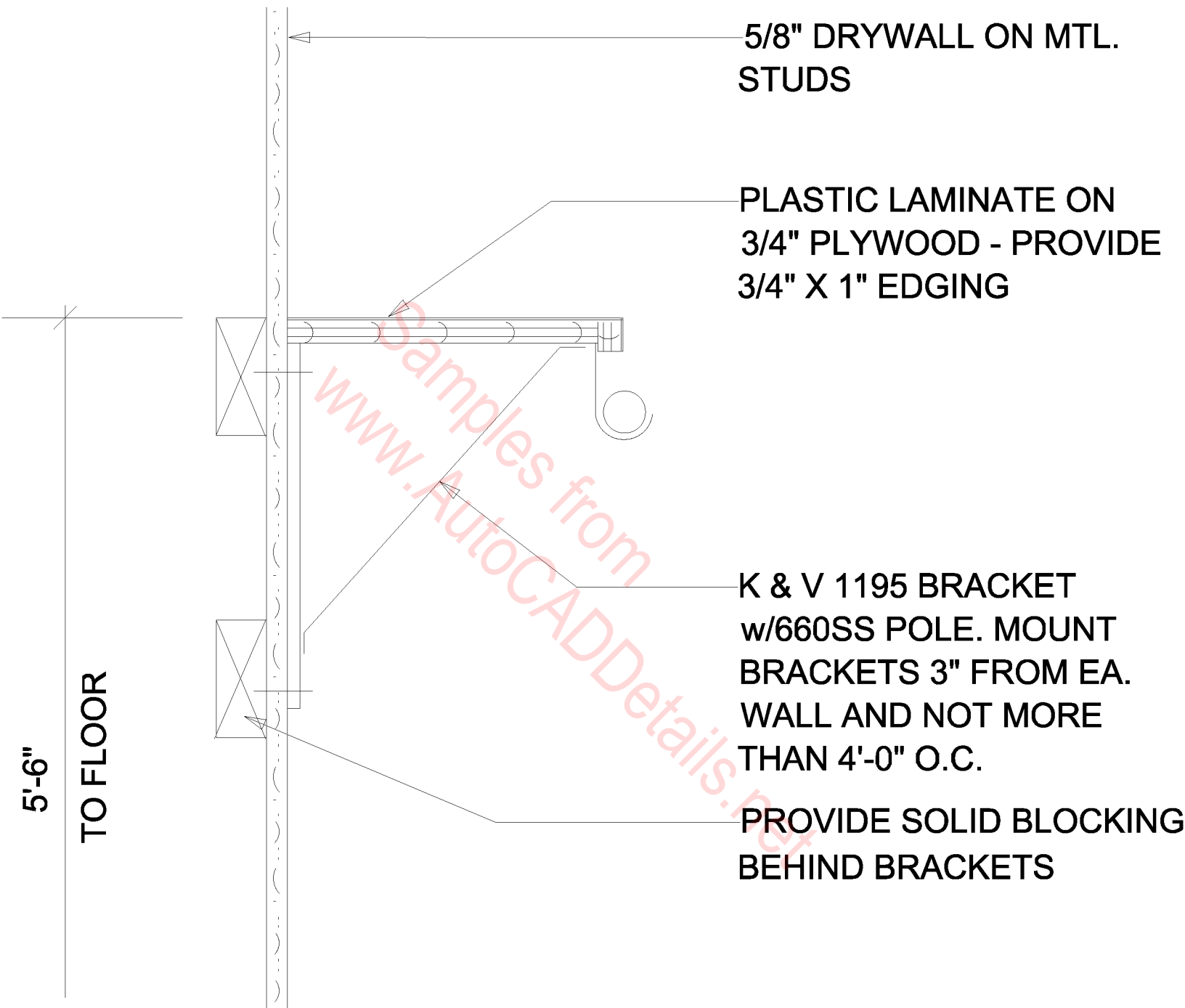




NOTE:
 (2) TANKS REQ'D.- (1) 3000 GAL. (MIN.) TANK FOR UNLEADED, (1) 1000 GAL. (MIN.) TANK FOR DIESEL FUEL. ASSUME A HIGH WATER TABLE BALANCE SYSTEM.

NOTE:
 THE FUEL EQUIP. SUBCONTRACTOR IS RESPONSIBLE FOR THE DESIGN OF THE TANK HOLD-DOWN SYSTEM.

FUEL TANK DETAIL



ROD AND SHELF