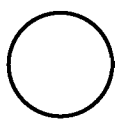


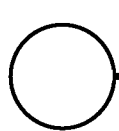
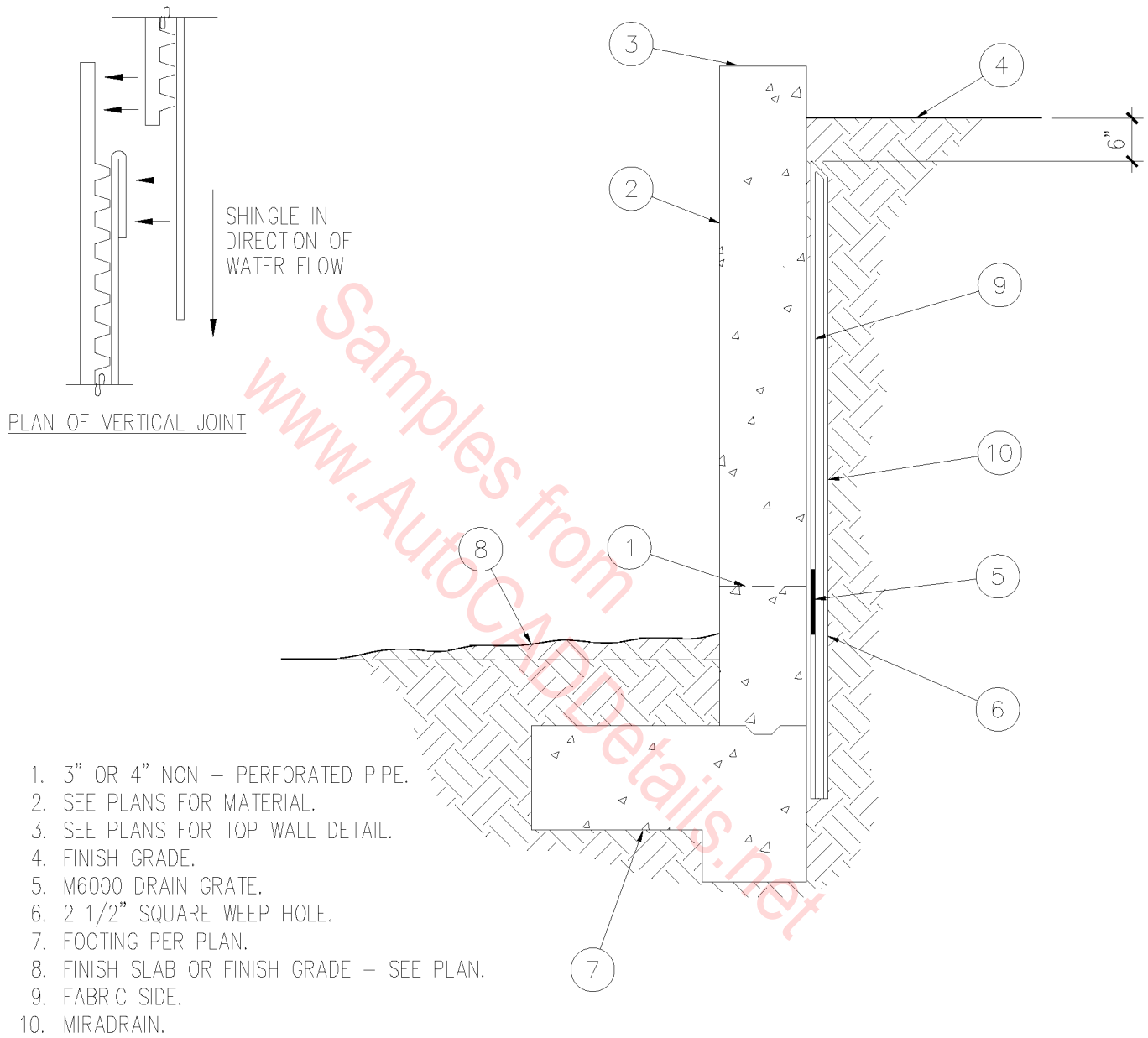
1. FOOTING PER PLANS.
2. SEE PLANS FOR MATERIAL.
3. SEE PLANS FOR TOP WALL DETAIL.
4. FINISH GRADE.
5. MIRADRAIN WATER PROOFING SYSTEM.
6. MIRADRAIN FABRIC.
7. PERFORATED DRAIN PIPE.
8. 12 X 12 CONTINUOUS GRAVEL BACKFILL.
10. SLAB.



FOOTING DRAINAGE

SCALE: 1/2" = 1'-0"

07A-1001



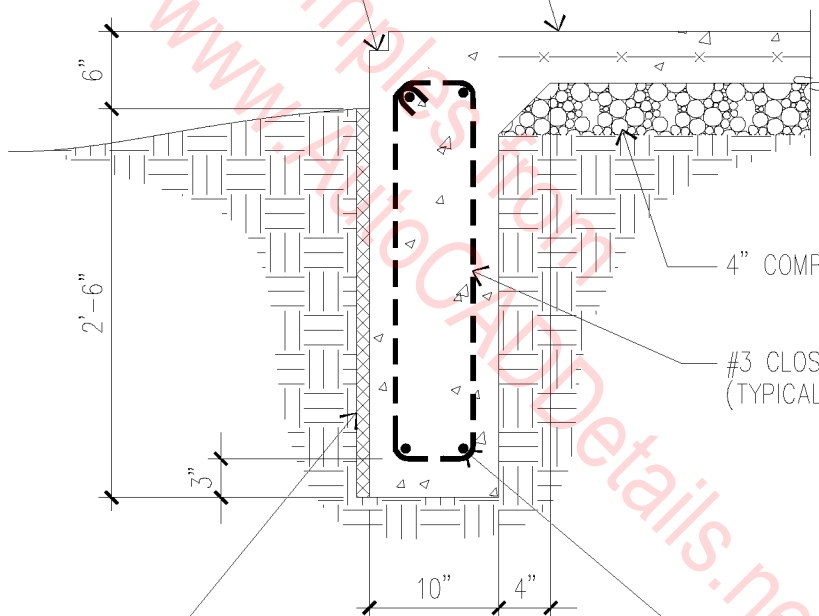
RETAINING WALL DRAINAGE

SCALE: 1/2" = 1'-0"

07A-1002

1-1/2" X 1-1/2" CONTINUOUS SHEETING LEDGE

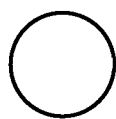
4" CONCRETE SLAB W/ 6X6 - W.1.4/W.1.4 WELDED WIRE FABRIC



#3 CLOSED STIRRUPS @ 4'-0" O.C. (TYPICAL FOR ALIGNMENT)

RIGID INSULATION (R-5 MINIMUM)

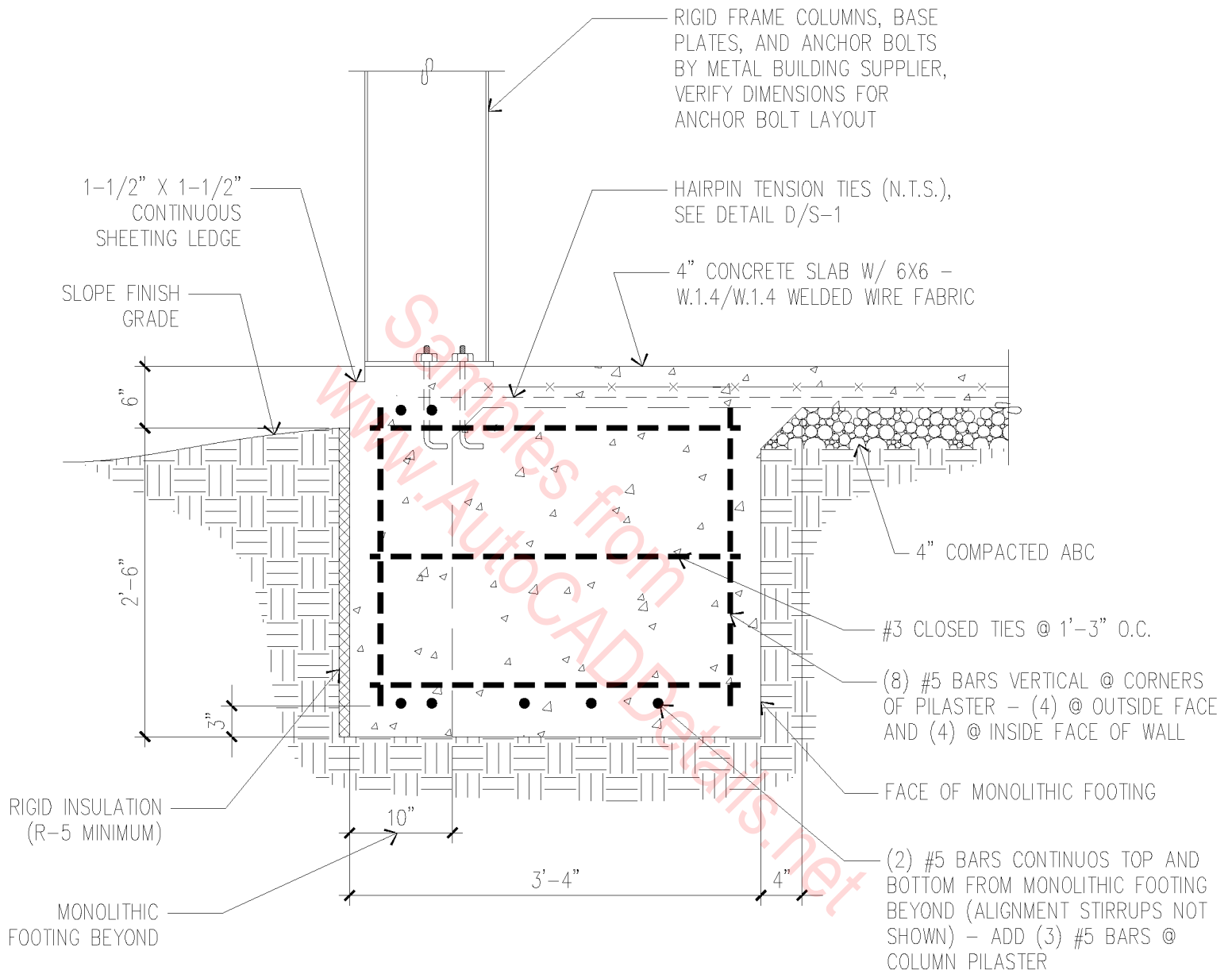
(2) #5 BARS CONTINUOUS TOP AND BOTTOM



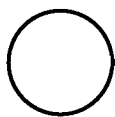
MONOLITHIC FOOTING

3/4" = 1'-0"

07A-1003

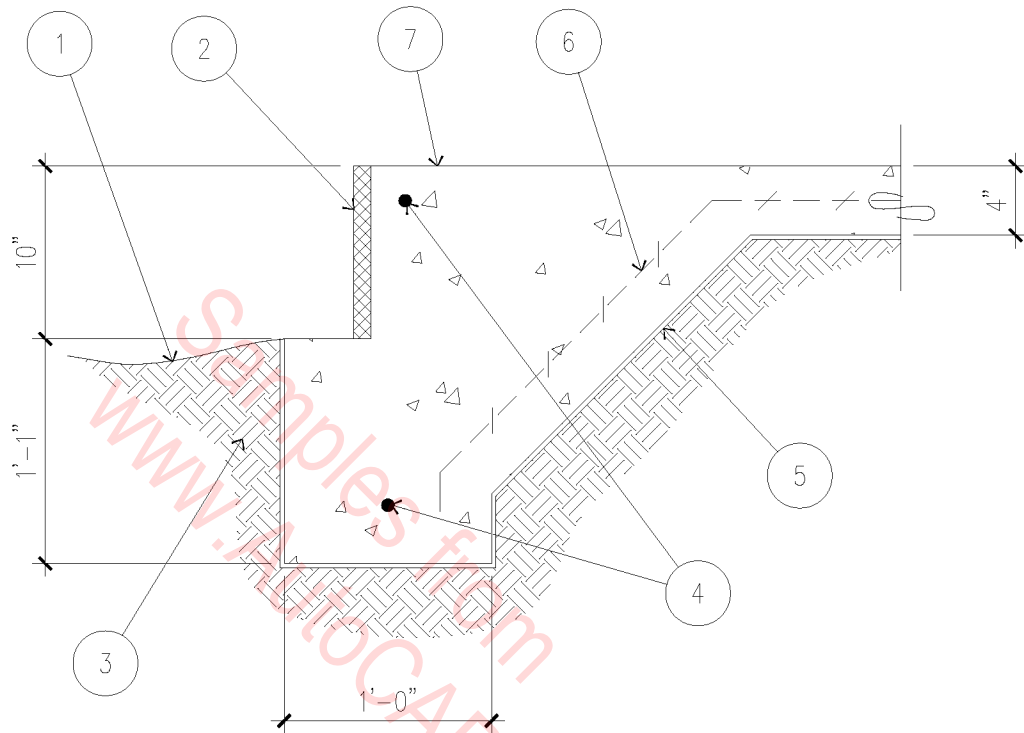


MONOLITHIC FOOTING @ RIGID FRAME COLUMN



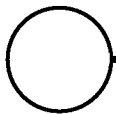
3/4" = 1'-0"

07A-1004



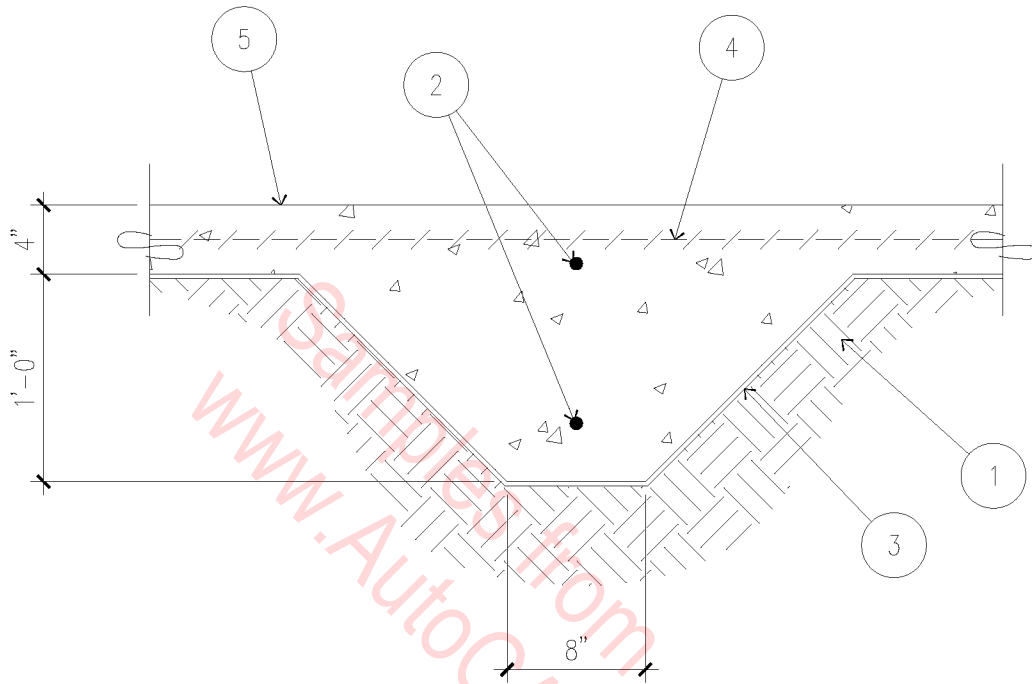
1. FINISHED GRADE - SLOPE 2" ON FIRST 24".
2. 1" INSULATION.
3. SUBGRADE.
4. #4 REBAR, CONTINUOUS.
5. 6 MIL POLY VAPOR BARRIER.
6. 6" X 6" 10 GA. X 10 GA. WIRE MESH.
7. 3,000 P.S.I. CONCRETE SLAB.

FOOTING DETAIL WITH BRICK

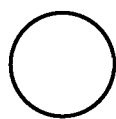


1" = 1'-0"

07A-1005



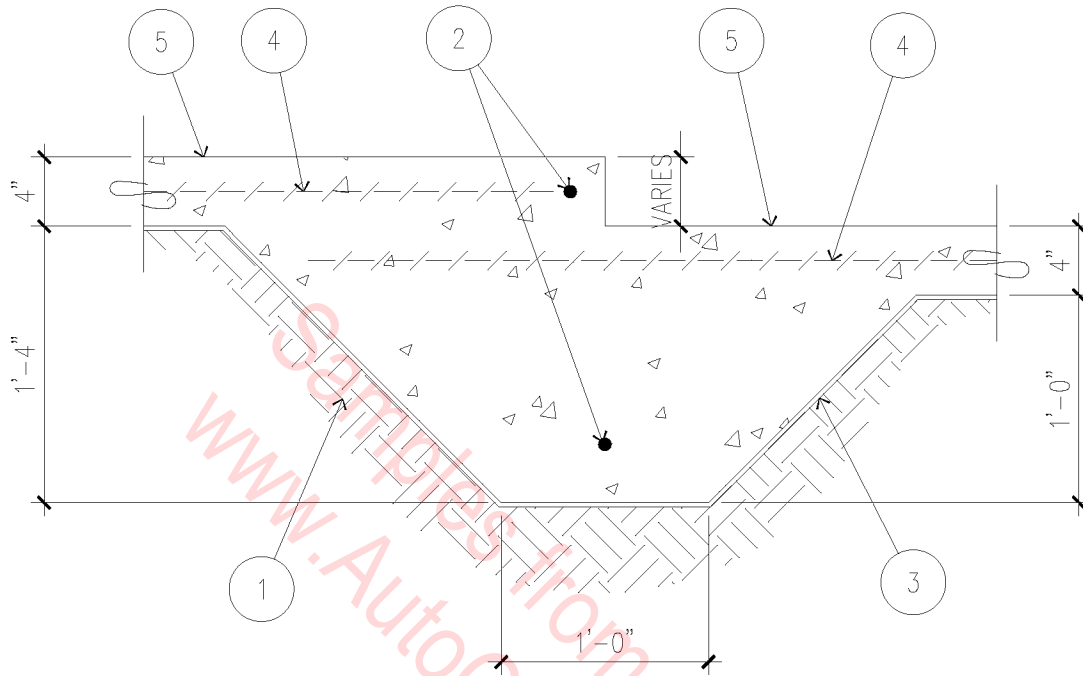
1. SUBGRADE.
2. #4 REBAR, CONTINUOUS.
3. 6 MIL POLY VAPOR BARRIER.
4. 6" X 6" 10 GA. X 10 GA. WIRE MESH.
5. 3,000 P.S.I. CONCRETE SLAB.



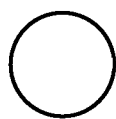
INTERIOR BEARING WALL

1" = 1'-0"

07A-1006



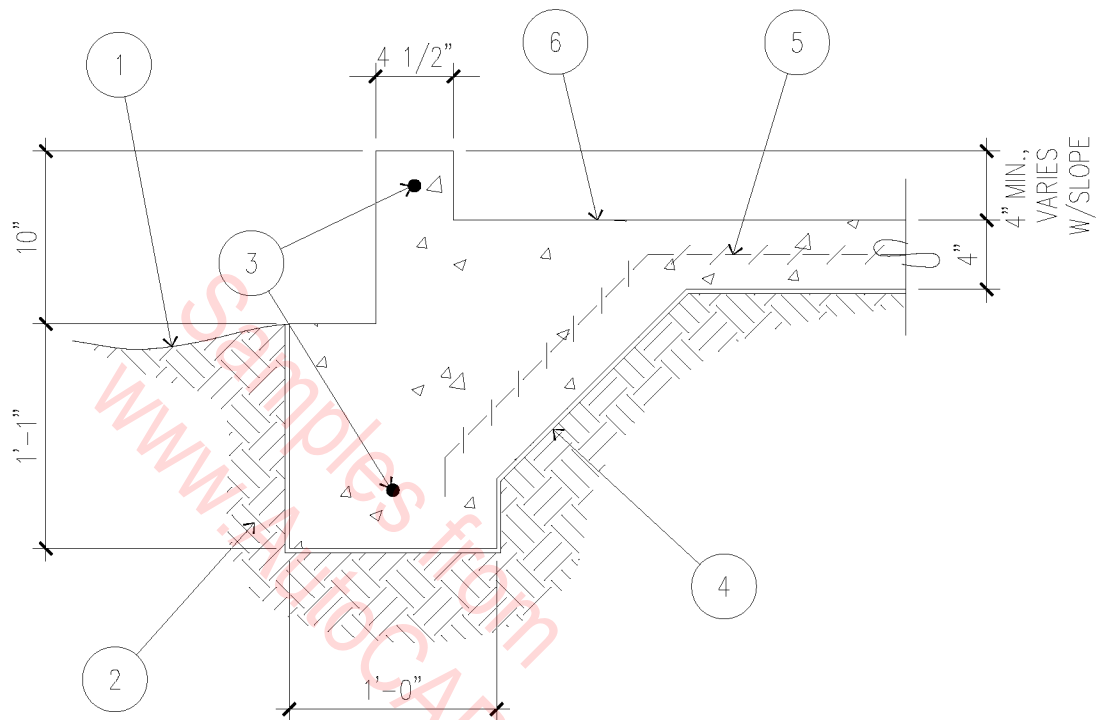
1. SUBGRADE.
2. #4 REBAR, CONTINUOUS.
3. 6 MIL POLY VAPOR BARRIER.
4. 6" X 6" 10 GA. X 10 GA. WIRE MESH.
5. 3,000 P.S.I. CONCRETE SLAB.



MAIN SLAB TO GARAGE

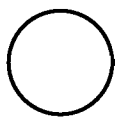
1" = 1'-0"

07A-1007



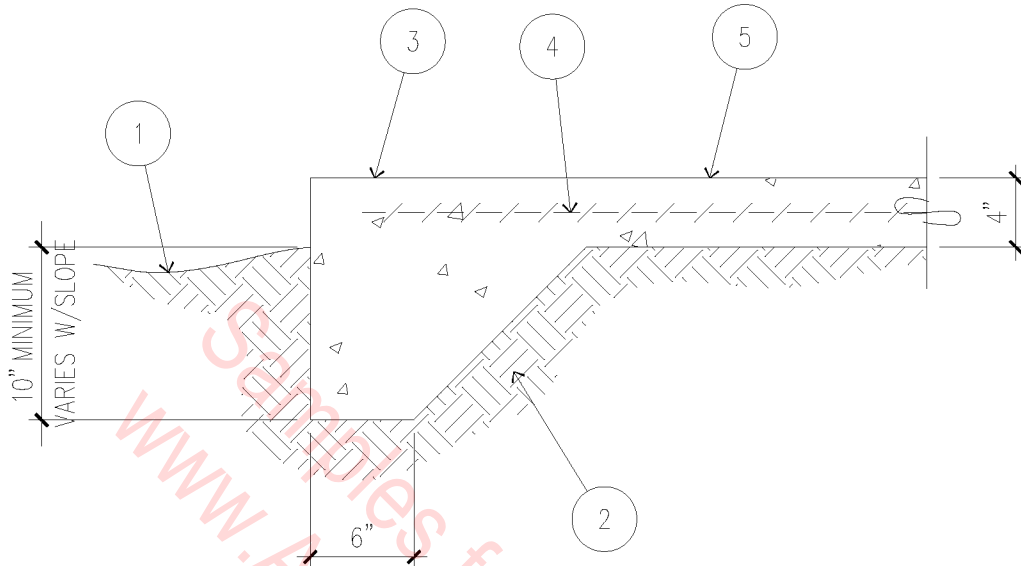
1. FINISHED GRADE - SLOPE 2" ON FIRST 24".
2. SUBGRADE.
3. #4 REBAR, CONTINUOUS.
4. 6 MIL POLY VAPOR BARRIER.
5. 6" X 6" 10 GA. X 10 GA. WIRE MESH.
6. 3,000 P.S.I. CONCRETE SLAB.

FOOTING DETAIL AT CURB



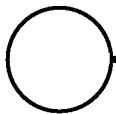
1" = 1'-0"

07A-1008



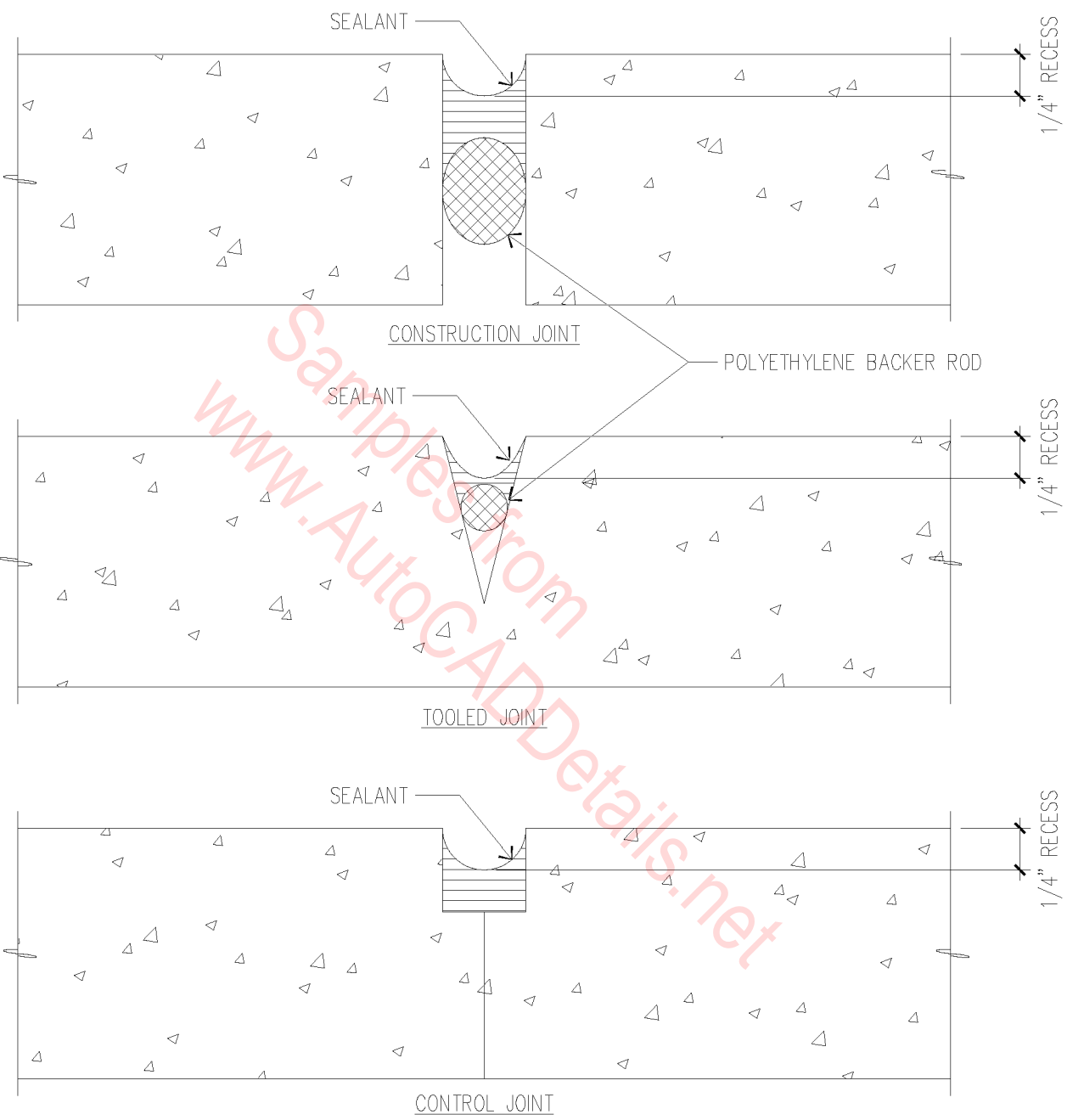
1. FINISHED GRADE.
2. SUBGRADE.
3. AGGREGATE FINISH.
4. 6" X 6" 10 GA. X 10 GA. WIRE MESH.
5. 3,000 P.S.I. CONCRETE SLAB.

FOOTING DETAIL AT PORCH

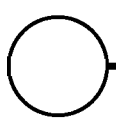


1" = 1'-0"

07A-1009



Sample from
www.AutocADDetails.net



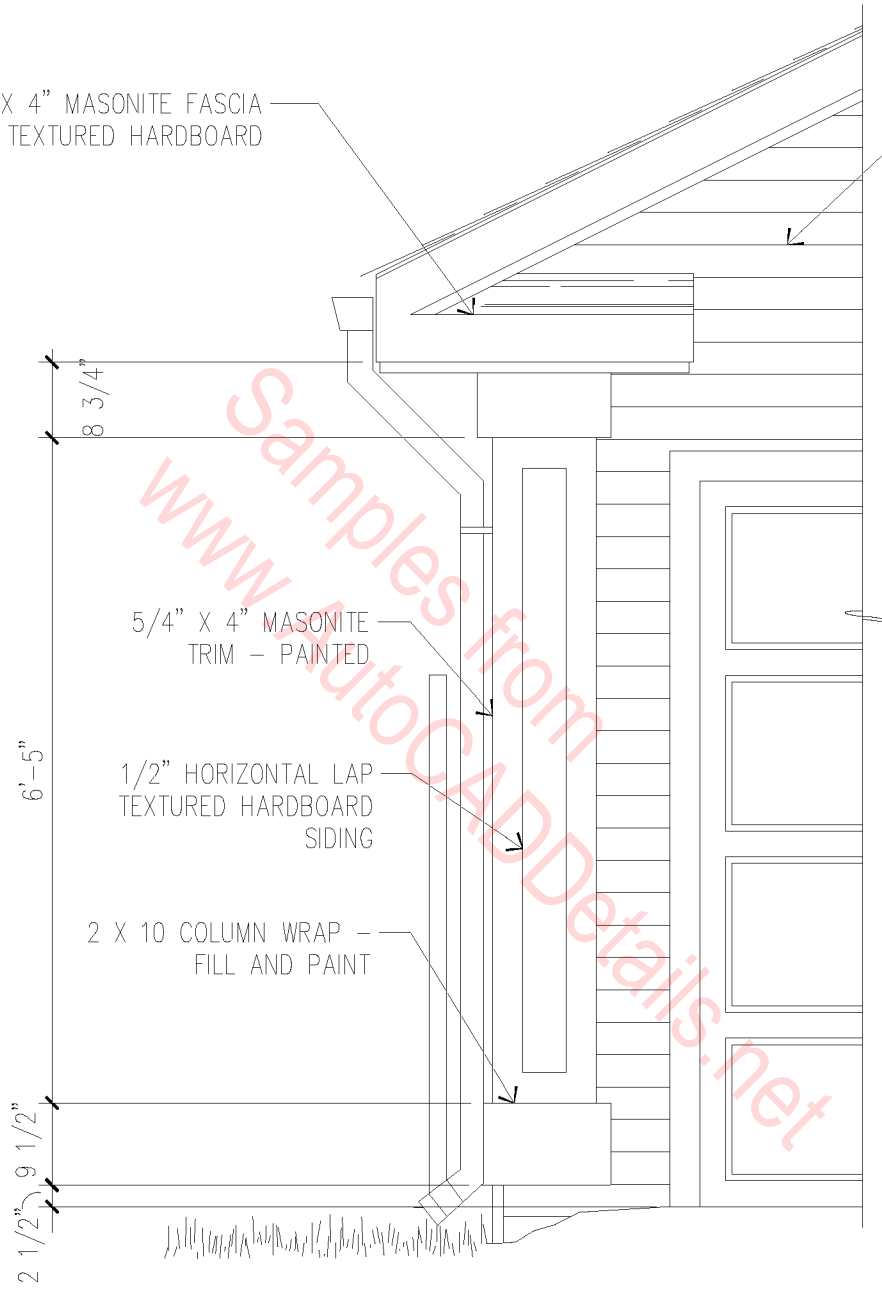
JOINT SEALING DETAIL

1" = 1"

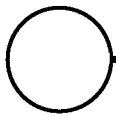
07F-2001

5/4" X 4" MASONITE FASCIA
ON 8" TEXTURED HARDBOARD

FIBERGLASS T-LOCK
SHINGLES ON 15 LB.
FELT



CORNER DETAIL



1/2" = 1'-0"

07F-1001

ASPHALT SHINGLES ON (1) LAYER OF #15 FELT ON 1/2" A.P.A. ROOF SHEATHING

24 GA. GALVANIZED METAL DRIP EDGE

5/4" X 3 1/2" HARDBOARD TRIM - PAINTED

8" HARDBOARD LAP SIDING - COLORLOCK OR EQUAL

1/2" GYPSUM SHEATHING

R-19 BATT INSULATION

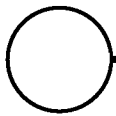
(2) LAYERS OF 5/8" TYPE 'X' GYPSUM BOARD

2 X 6 STUD WALL @ 16" O.C.

PREFABRICATED WOOD TRUSSES - SEE FRAMING PLAN

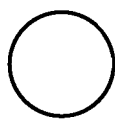
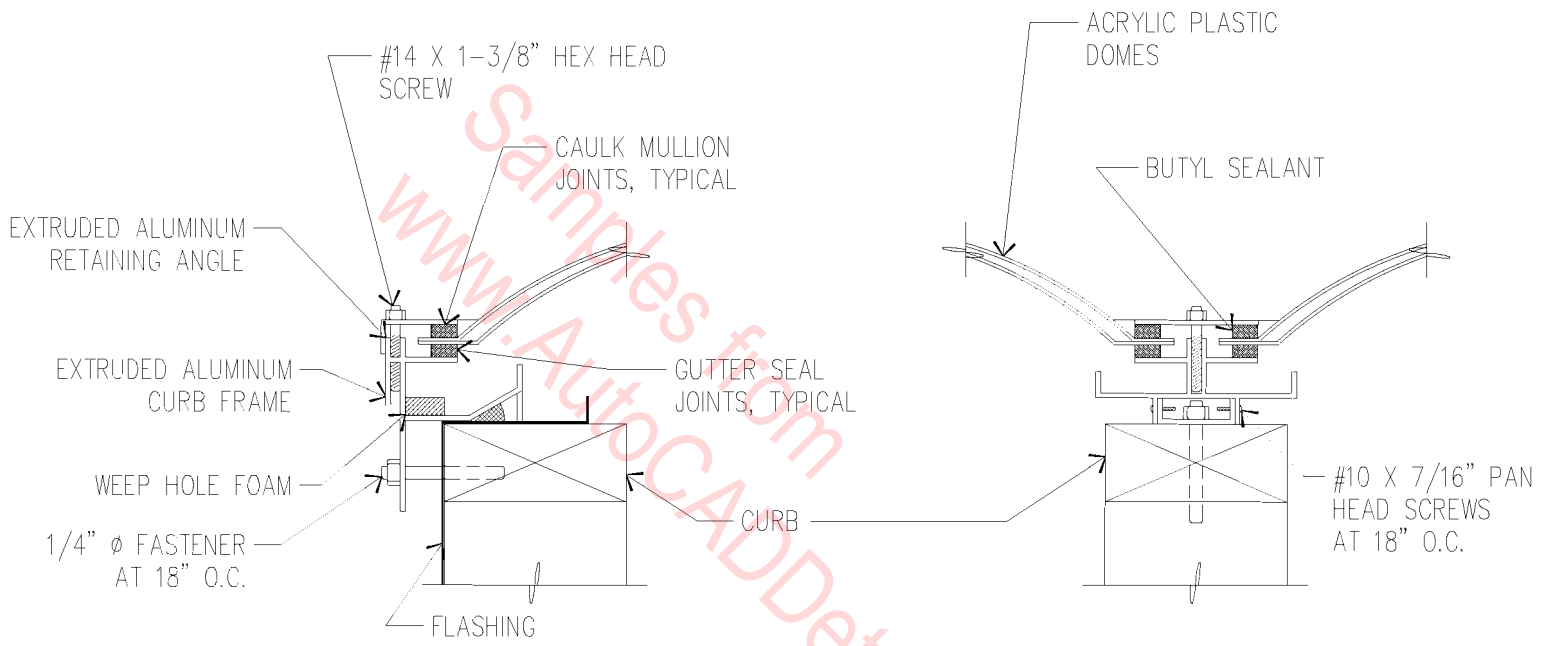
Watermark: Samples from www.AutoCADDetails.net

TRUSS AND NON-BEARING WALL DETAIL



1 1/2" = 1'-0"

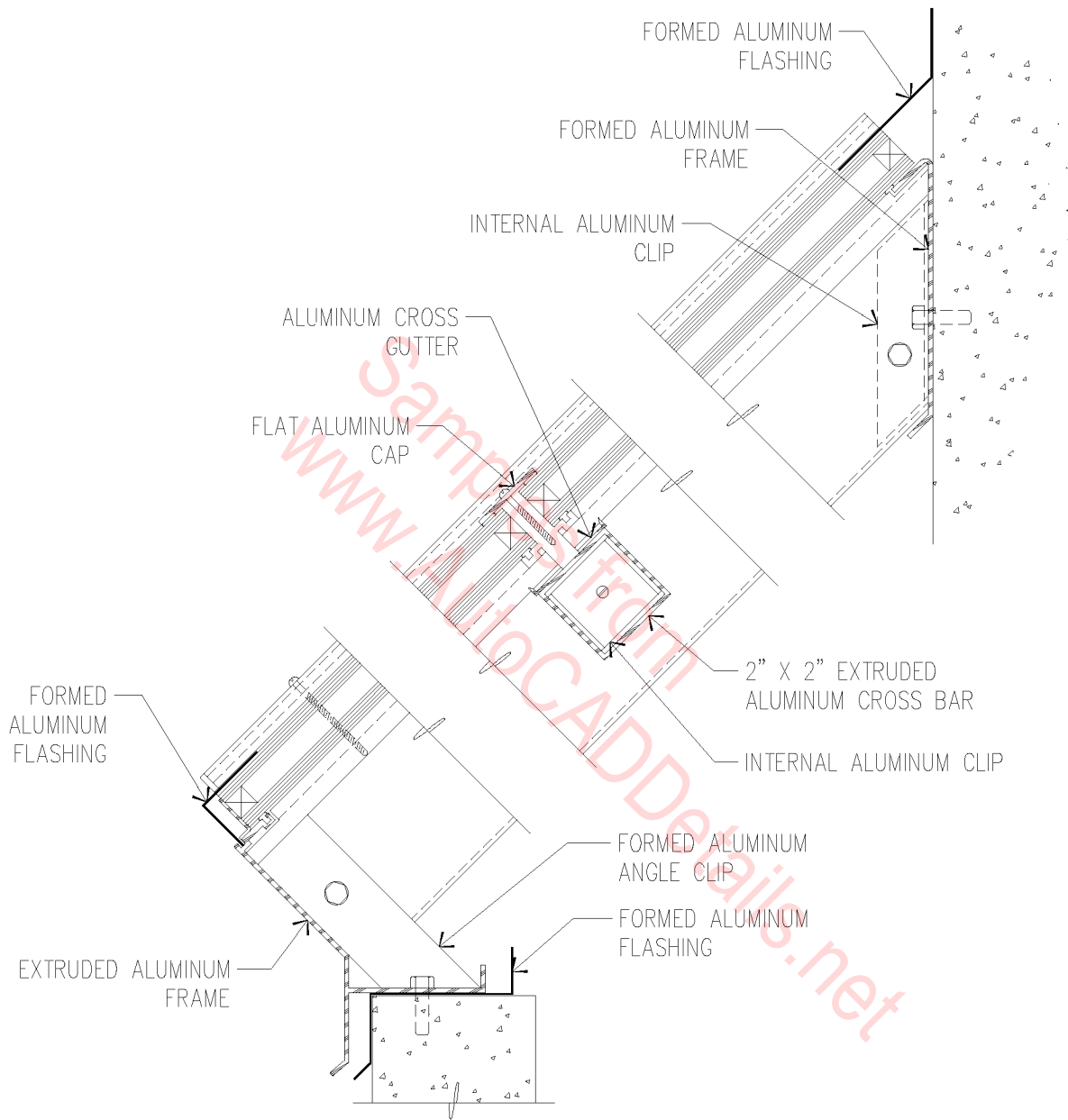
07F-1002



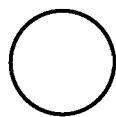
CLUSTER SKYLIGHT

3" = 1'-0"

07E-5001

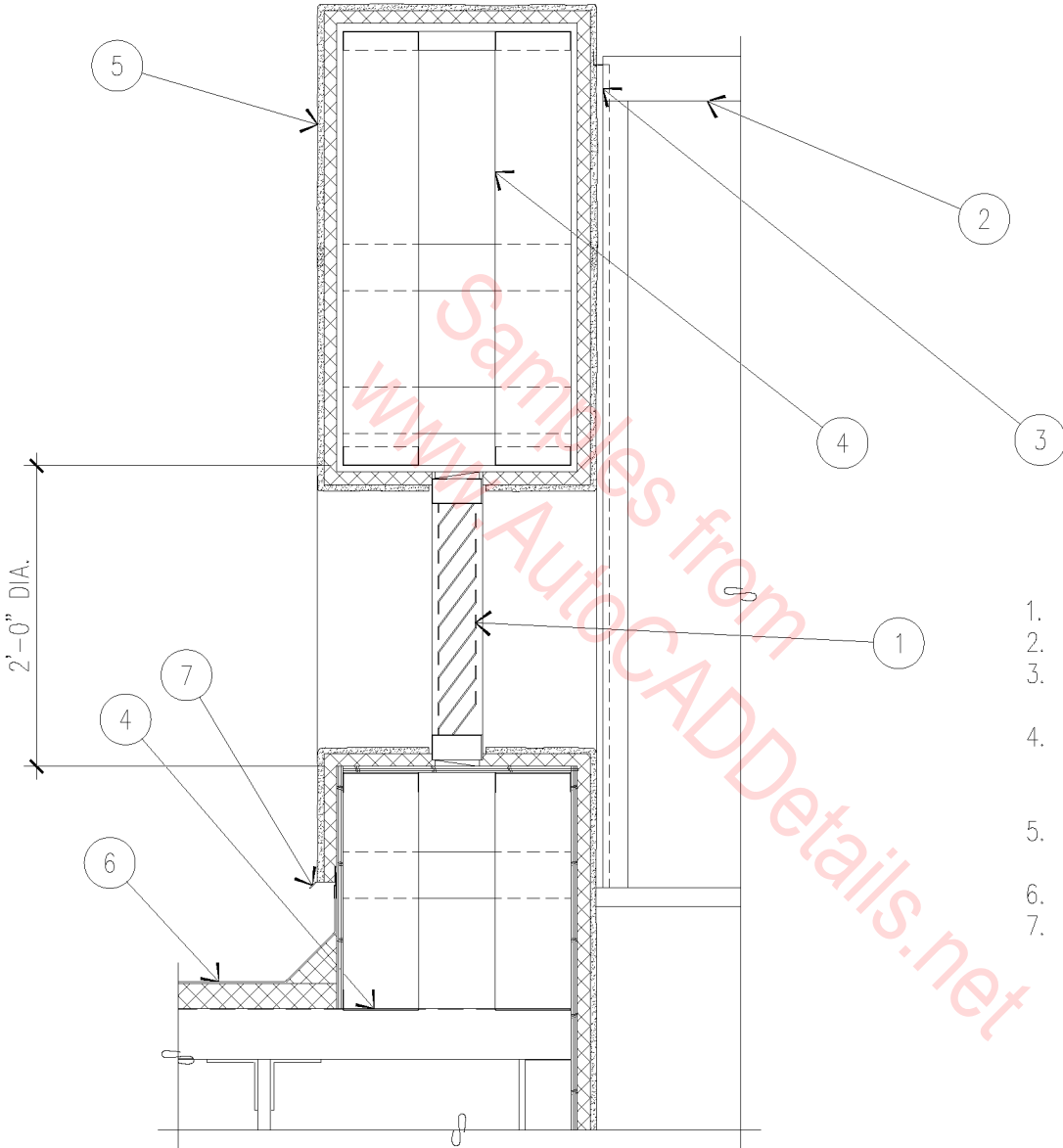


CUSTOM METAL-FRAMED GLASS ROOF SYSTEM

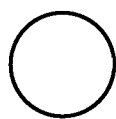


3" = 1'-0"

07E-4001



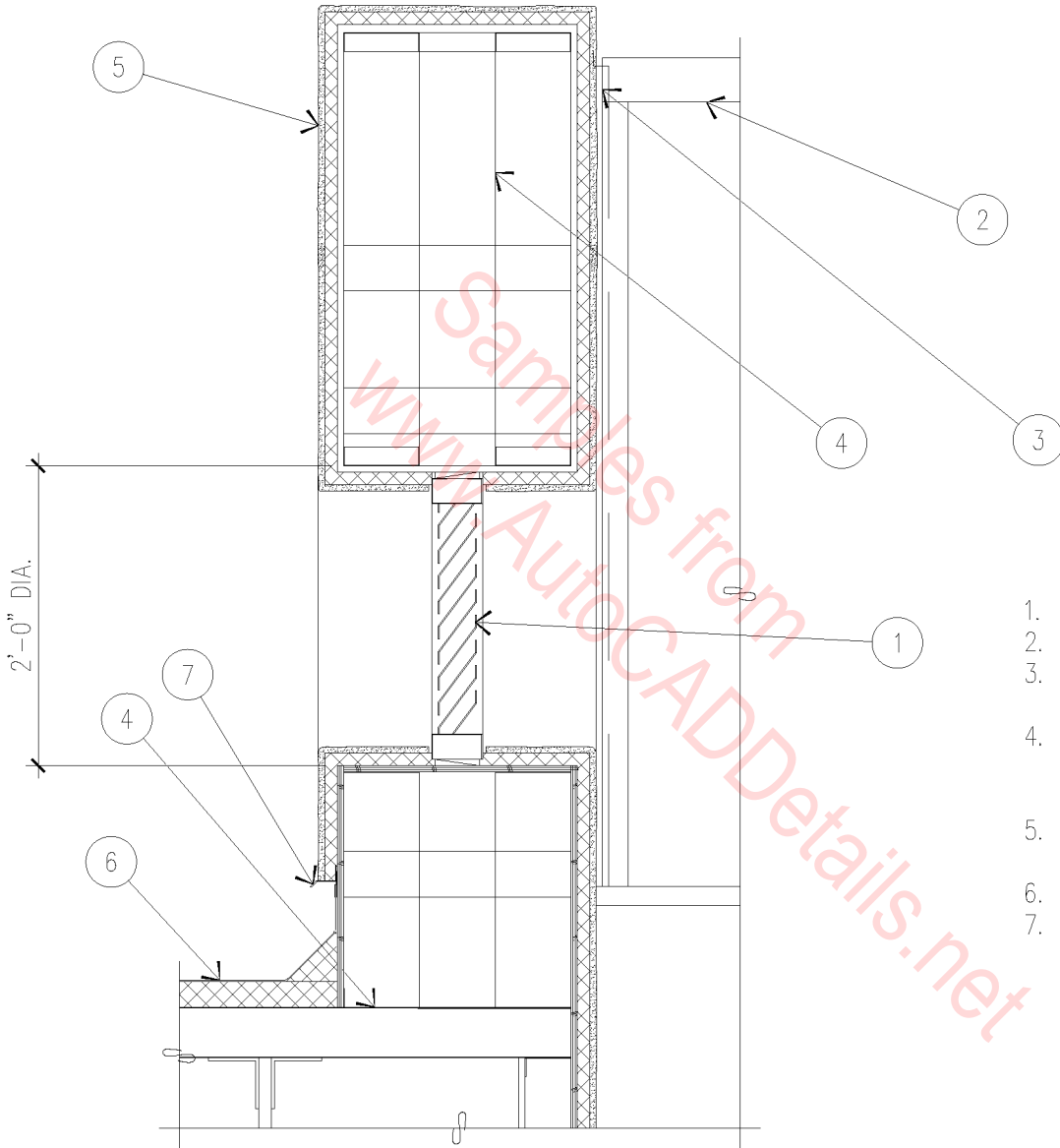
1. METAL LOUVER.
2. SKYLIGHT RIDGE.
3. ALUMINUM REGLET FLASHING BY SKYLIGHT MANUFACTURER.
4. 6" X 20 GAUGE METAL STUD WALL WITH 1/2" PLYWOOD SHEATHING.
5. CEMENT STUCCO OVER METAL LATH AND 1" RIGID INSULATION.
6. SINGLE PLY MEMBRANE ROOF.
7. METAL WEEP SCREED / STUCCO STOP.



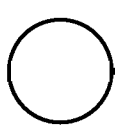
SKYLIGHT END WALL

3/4" = 1'-0"

07E-4002



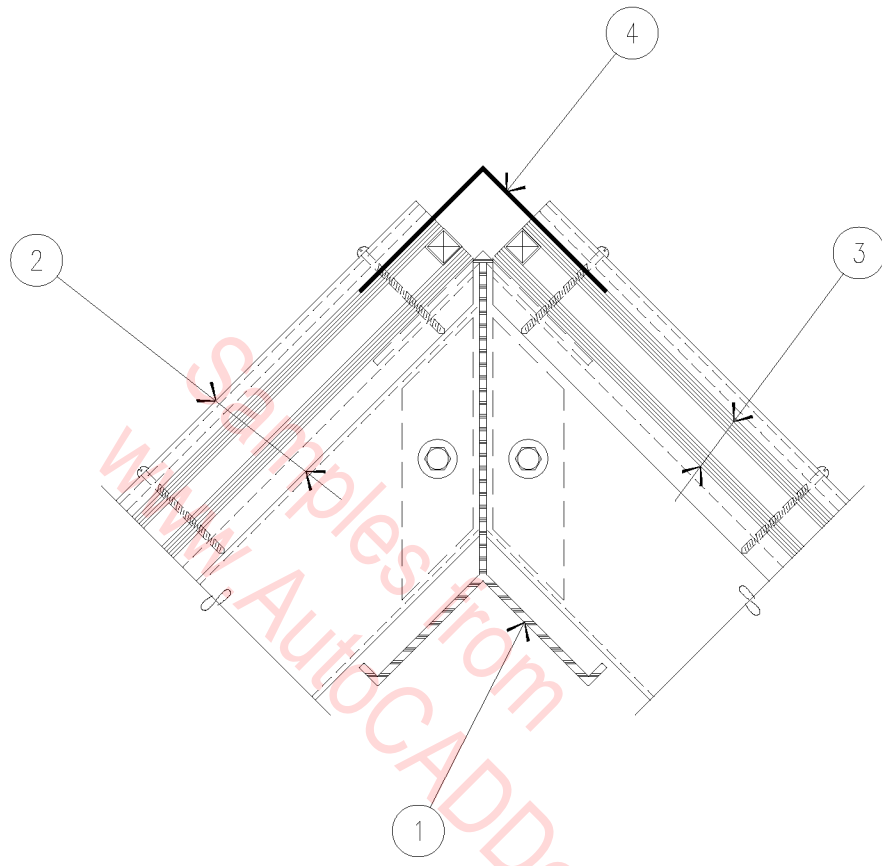
1. METAL LOUVER.
2. SKYLIGHT RIDGE.
3. ALUMINUM REGLET FLASHING BY SKYLIGHT MANUFACTURER.
4. 6" X 20 GAUGE METAL STUD WALL WITH 1/2" PLYWOOD SHEATHING.
5. CEMENT STUCCO OVER METAL LATH AND 1" RIGID INSULATION.
6. SINGLE PLY MEMBRANE ROOF.
7. METAL WEEP SCREED / STUCCO STOP.



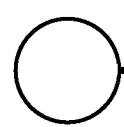
SKYLIGHT END WALL

3/4" = 1'-0"

07E-4002



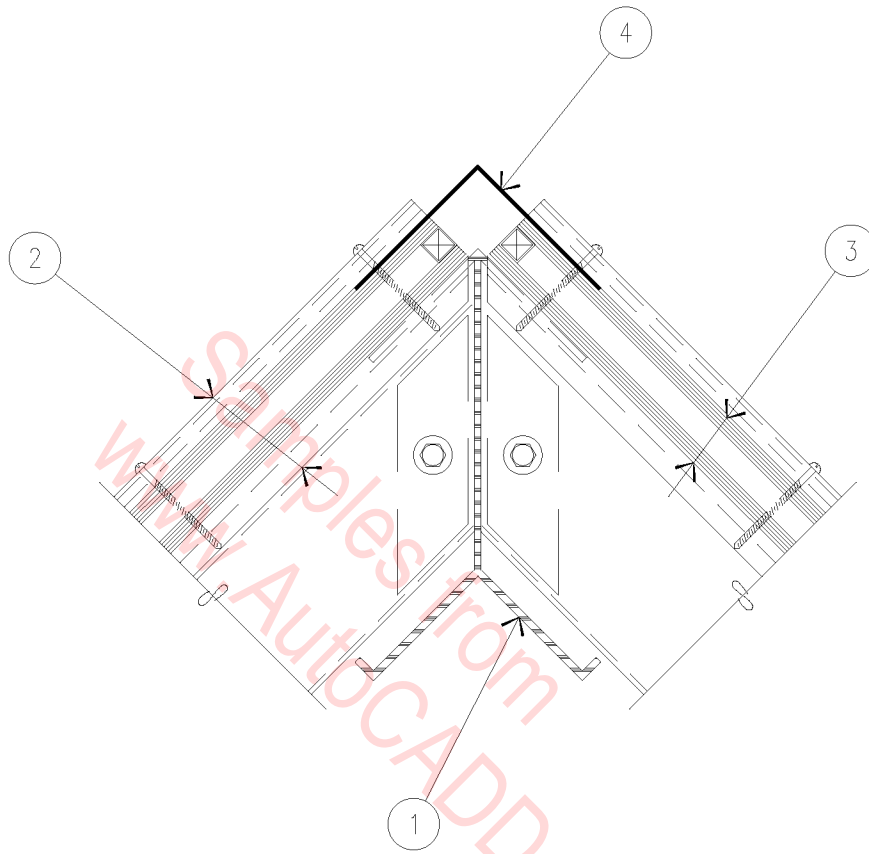
1. EXTRUDED ALUMINUM RIDGE WITH PAINTED FINISH – COLOR TO MATCH STOREFRONT WINDOWS.
2. GLAZING BARS
3. GLAZING.
4. ALUMINUM RIDGE CAP WITH PAINTED FINISH.



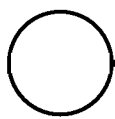
SKYLIGHT RIDGE

3" = 1'-0"

07E-4003



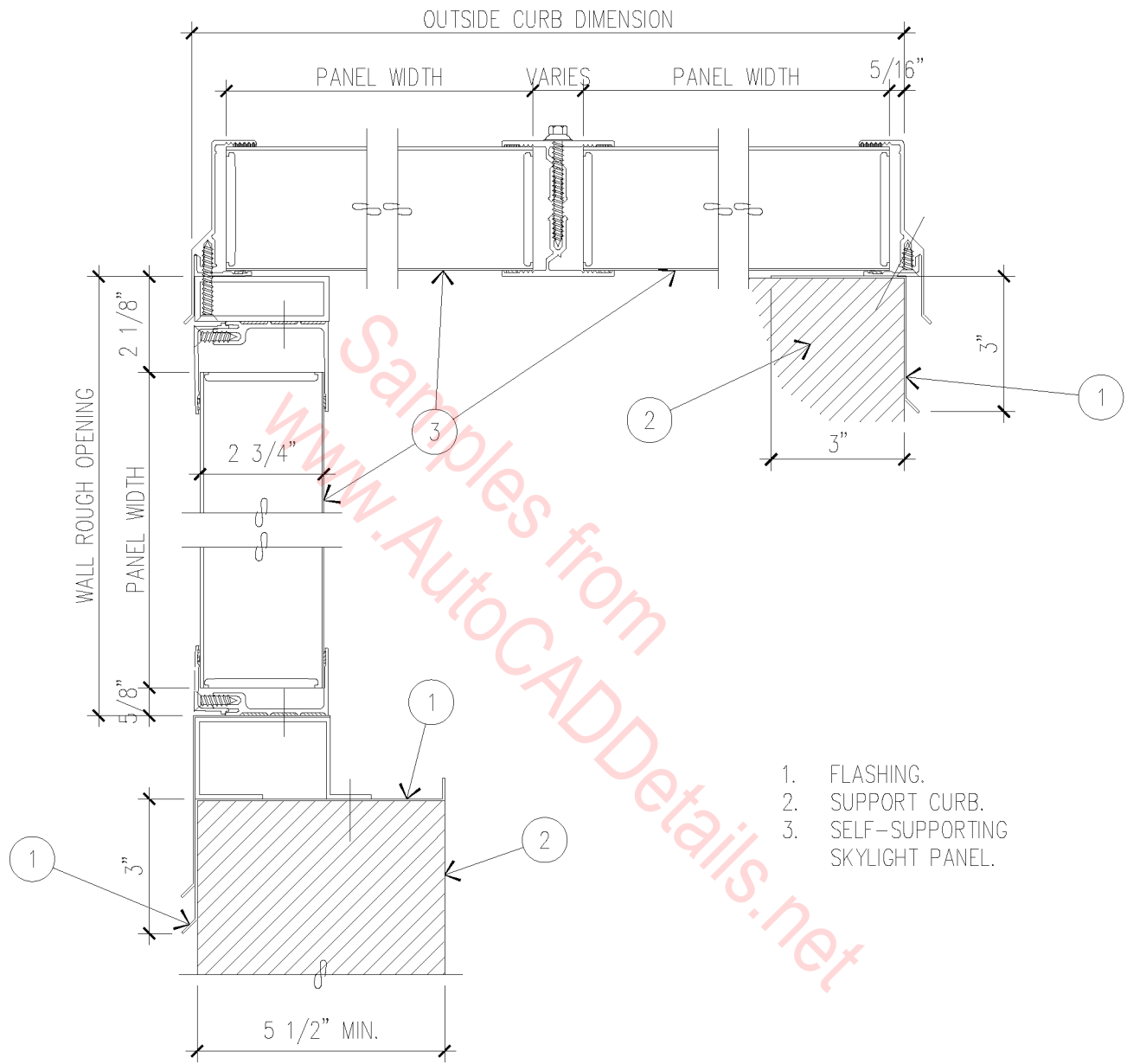
1. EXTRUDED ALUMINUM RIDGE WITH PAINTED FINISH – COLOR TO MATCH STOREFRONT WINDOWS.
2. GLAZING BARS
3. GLAZING.
4. ALUMINUM RIDGE CAP WITH PAINTED FINISH.



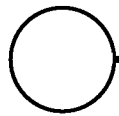
SKYLIGHT RIDGE

3" = 1'-0"

07E-4003

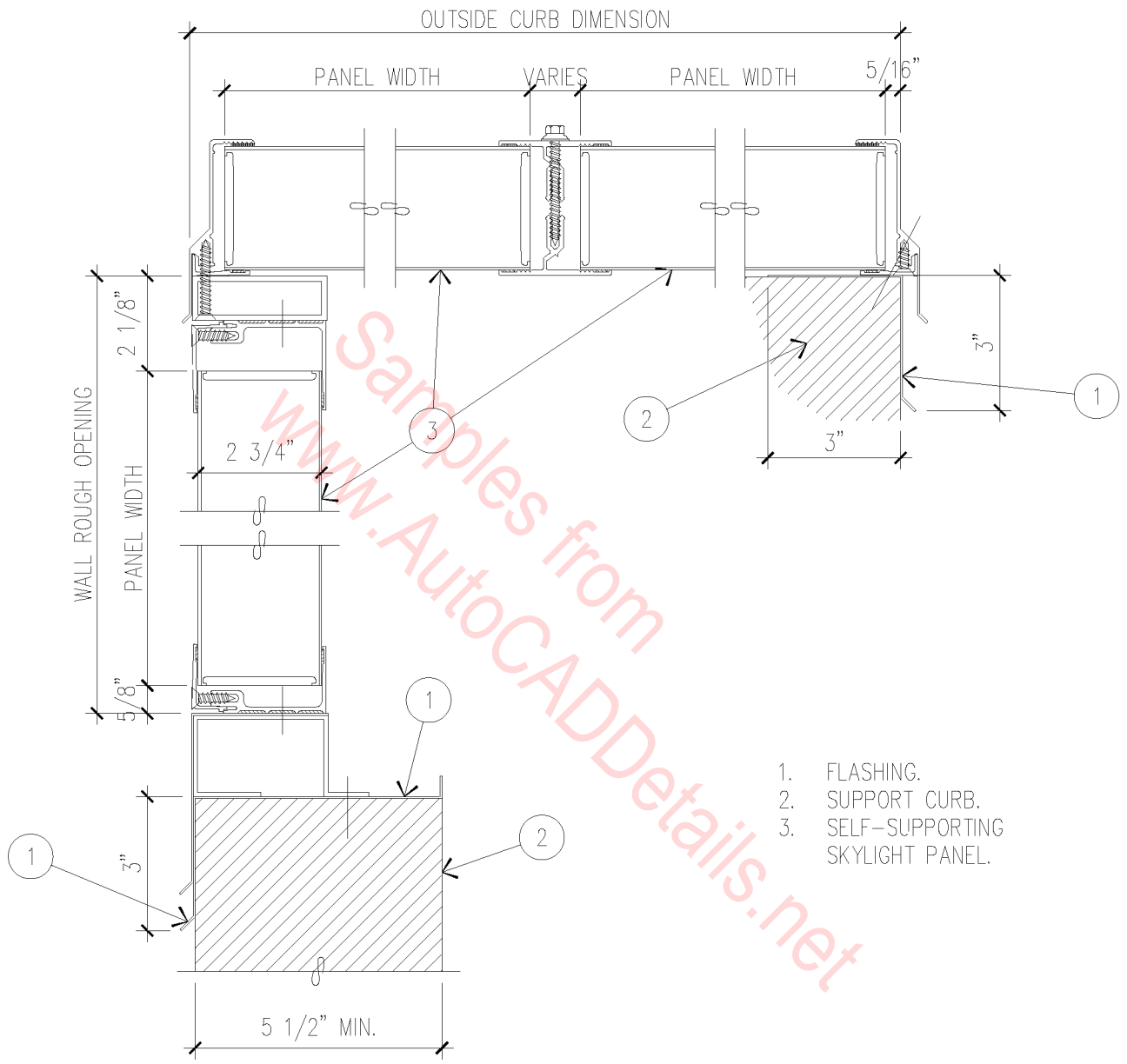


FIBERGLASS INSULATED SANDWICH PANEL SKYLIGHT

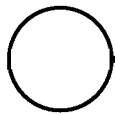


3" = 1'-0"

07E-4004

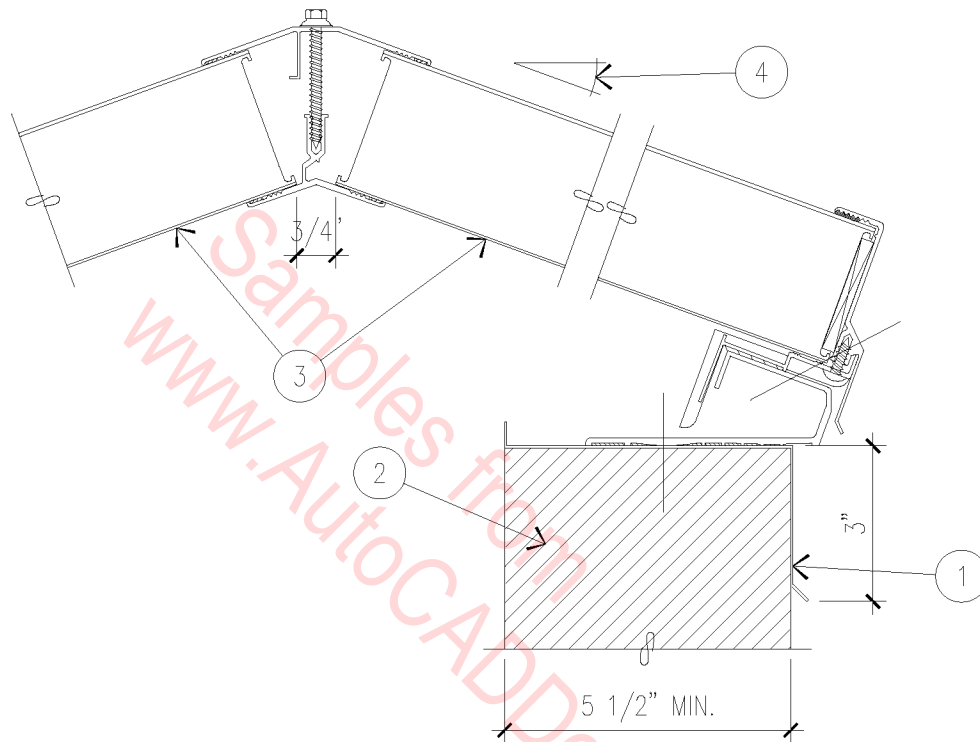


FIBERGLASS INSULATED SANDWICH PANEL SKYLIGHT



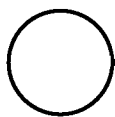
3" = 1'-0"

07E-4004



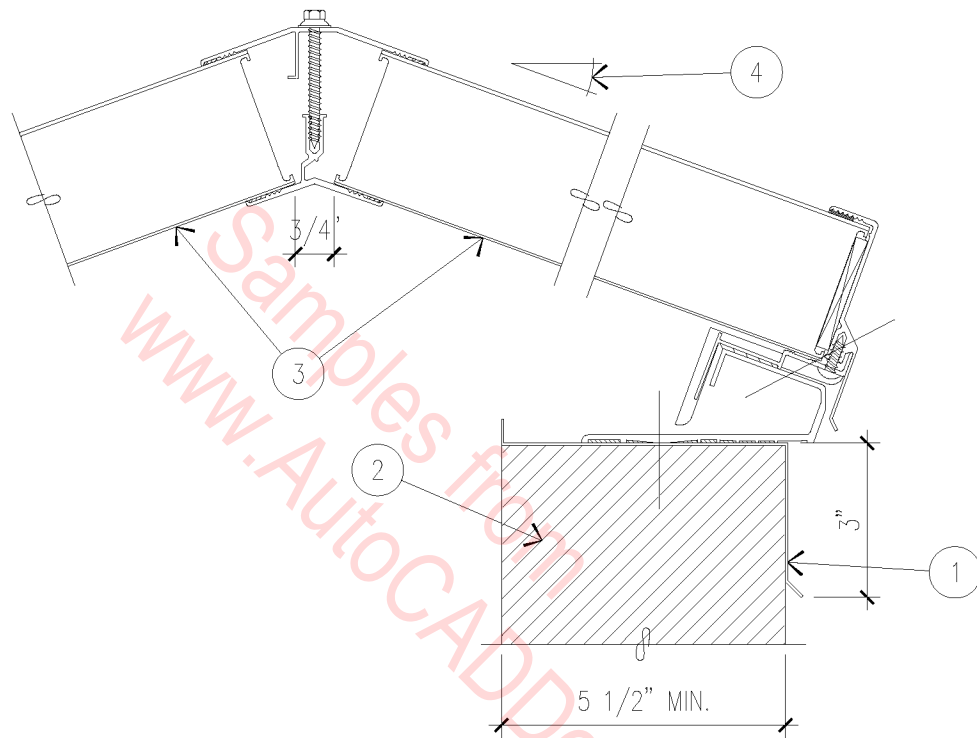
1. FLASHING.
2. SUPPORT CURB.
3. SELF-SUPPORTING SKYLIGHT PANEL.
4. SLOPE: 20°, 27.25°, 33.33°, OR 45° (TYPICAL).

FIBERGLASS INSULATED SANDWICH PANEL SKYLIGHT



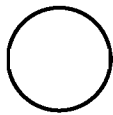
3" = 1'-0"

07E-4005



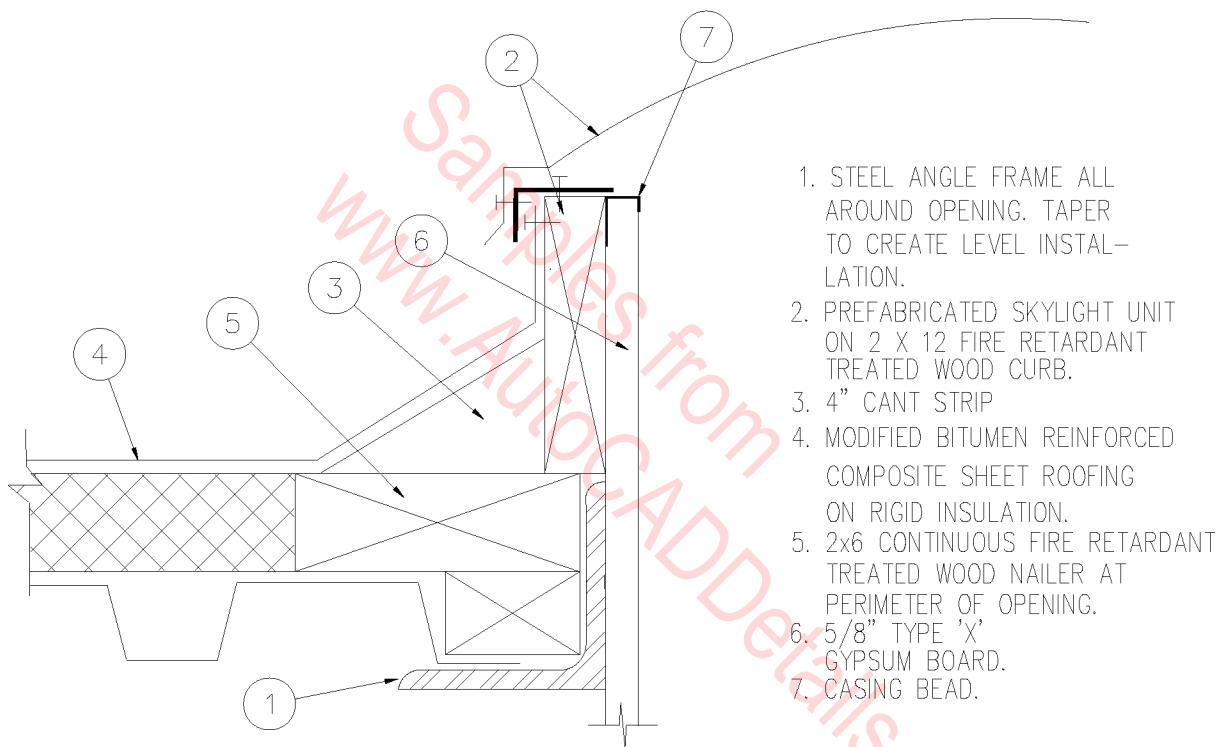
1. FLASHING.
2. SUPPORT CURB.
3. SELF-SUPPORTING SKYLIGHT PANEL.
4. SLOPE: 20°, 27.25°, 33.33°, OR 45° (TYPICAL).

FIBERGLASS INSULATED SANDWICH PANEL SKYLIGHT

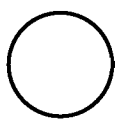


3" = 1'-0"

07E-4005



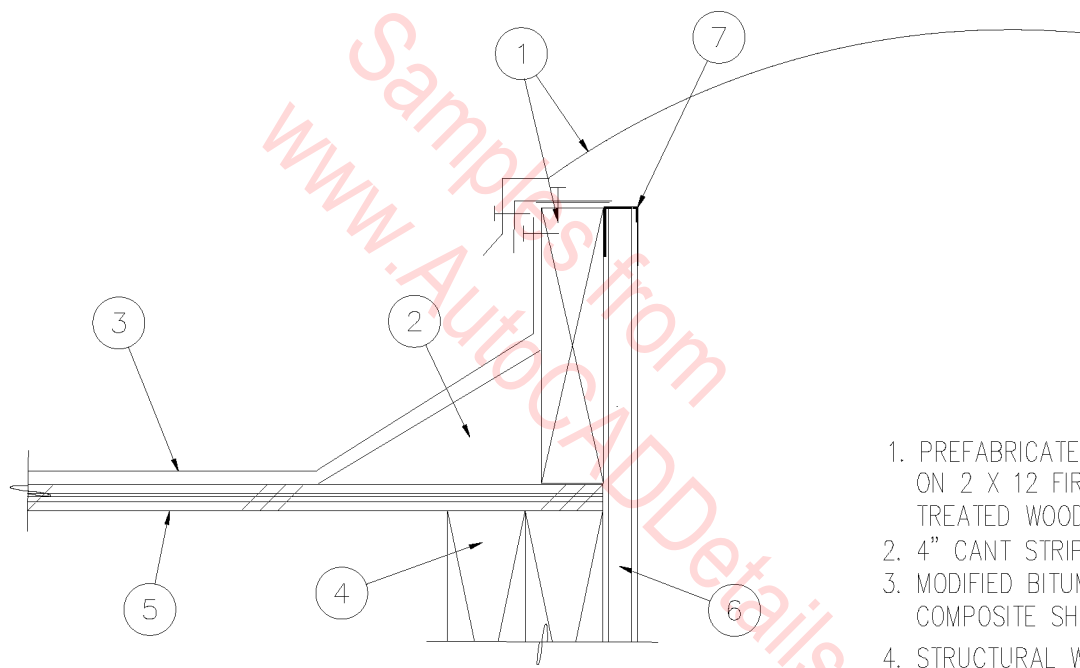
1. STEEL ANGLE FRAME ALL AROUND OPENING. TAPER TO CREATE LEVEL INSTALLATION.
2. PREFABRICATED SKYLIGHT UNIT ON 2 X 12 FIRE RETARDANT TREATED WOOD CURB.
3. 4" CANT STRIP
4. MODIFIED BITUMEN REINFORCED COMPOSITE SHEET ROOFING ON RIGID INSULATION.
5. 2x6 CONTINUOUS FIRE RETARDANT TREATED WOOD NAILER AT PERIMETER OF OPENING.
6. 5/8" TYPE 'X' GYPSUM BOARD.
7. CASING BEAD.



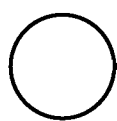
SKYLIGHT AT METAL DECK

SCALE: 1" = 1'-0"

07E-1001



1. PREFABRICATED SKYLIGHT UNIT ON 2 X 12 FIRE RETARDANT TREATED WOOD CURB.
2. 4" CANT STRIP.
3. MODIFIED BITUMEN REINFORCED COMPOSITE SHEET ROOFING
4. STRUCTURAL WOOD HEADERS.
5. STRUCTURAL PLYWOOD SHEATHING.
6. 5/8" TYPE 'X' GYPSUM BOARD.
7. CASING BEAD.



SKYLIGHT AT WOOD JOIST

SCALE: 1" = 1'-0"

07E-1002

2 X 12 CONTINUOUS
SKYLIGHT CURB

48" X 48" DOUBLE
DOME SKYLIGHT

MODIFIED BITUMEN ROOF
OVER RIGID INSULATION
AND 1/2" O.S.B. PLYWOOD

FLUORESCENT
LIGHT

OPEN WEB
ROOF TRUSS

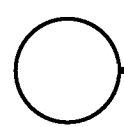
5/8" GYPSUM BOARD

4"
3 1/2"

10 1/2"

6'-1 1/2"

10 1/2"

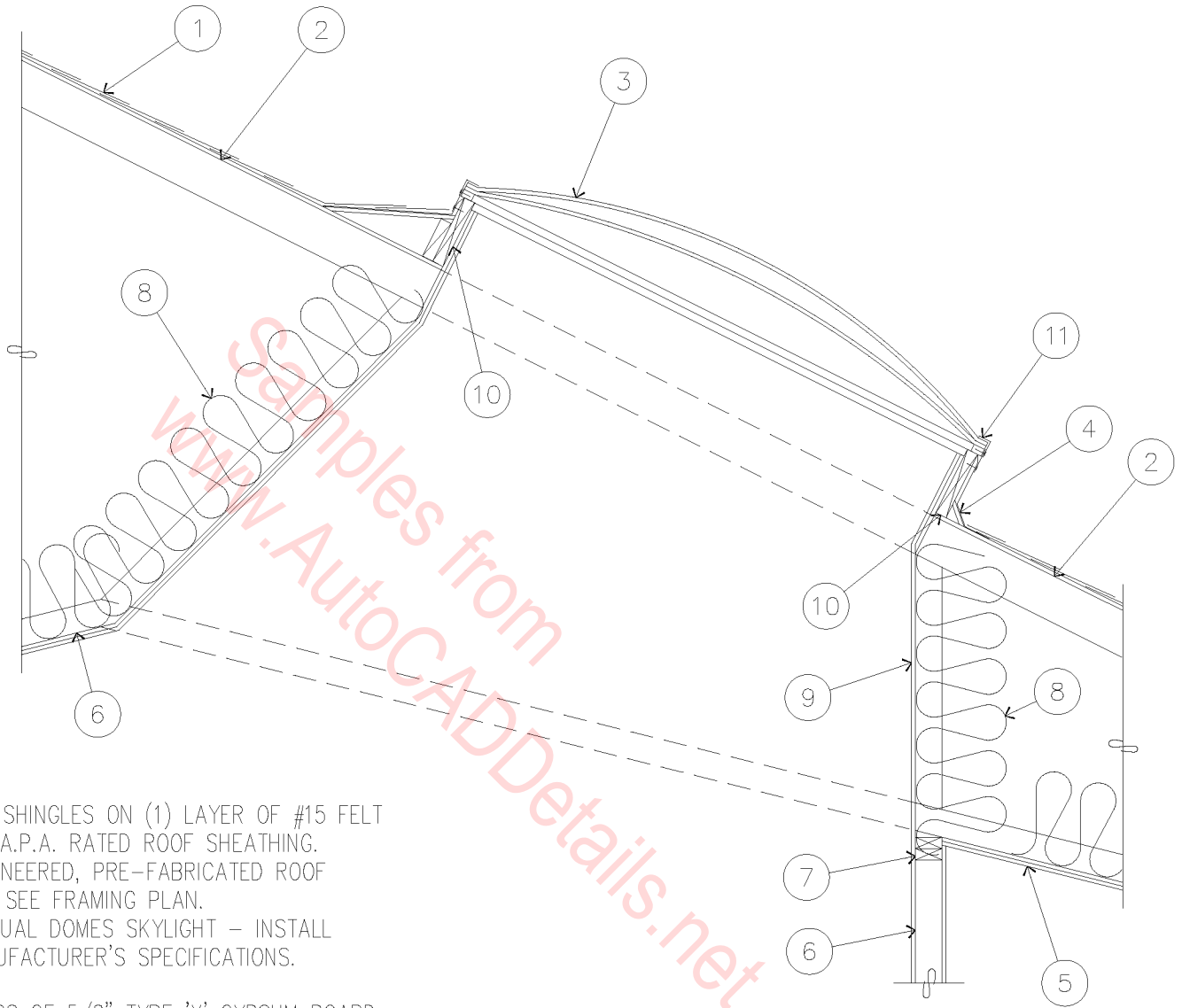


SKYLIGHT - LIGHT WELL

3/8" = 1'-0"

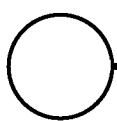
07E-1003

www.AutocADDetails.net



1. ASPHALT SHINGLES ON (1) LAYER OF #15 FELT ON 1/2" A.P.A. RATED ROOF SHEATHING.
2. PRE-ENGINEERED, PRE-FABRICATED ROOF TRUSS - SEE FRAMING PLAN.
3. 2' X 6' DUAL DOMES SKYLIGHT - INSTALL PER MANUFACTURER'S SPECIFICATIONS.
4. CRICKET.
5. (2) LAYERS OF 5/8" TYPE 'X' GYPSUM BOARD.
6. 2 X 4 STUD WALL @ 16" O.C.
7. (2) 2 X 6'S.
8. R-30 CEILING INSULATION.
9. 1/2" GYPSUM BOARD.
10. 2 X 10 CURB.
11. J-METAL.

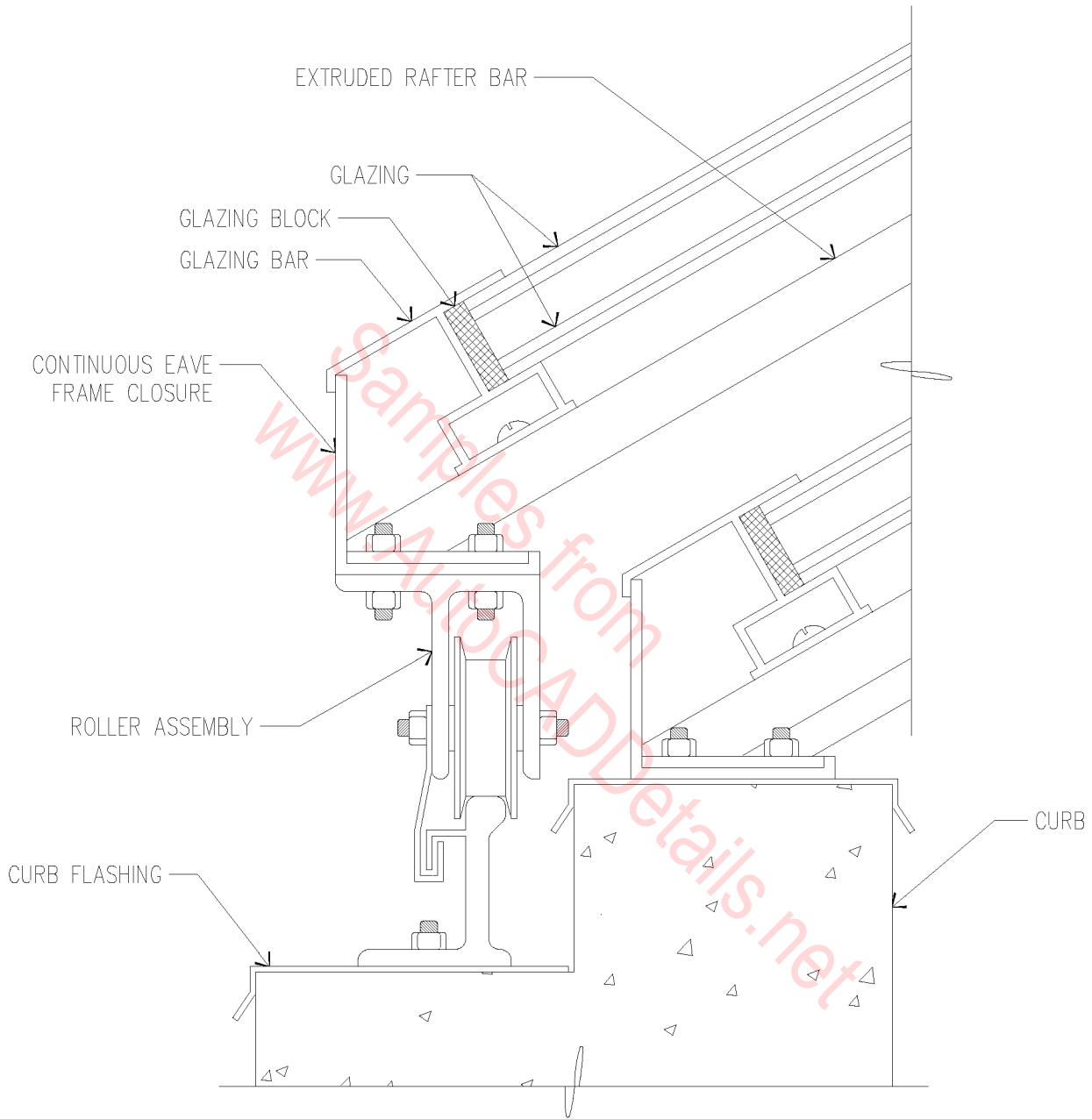
NOTE: INTERIOR OPENING FOR SKYLIGHT TO MATCH CEILING RIDGE AND WALL.



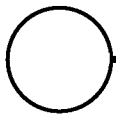
SKYLIGHT DETAIL

1/2" = 1'-0"

07E-1004

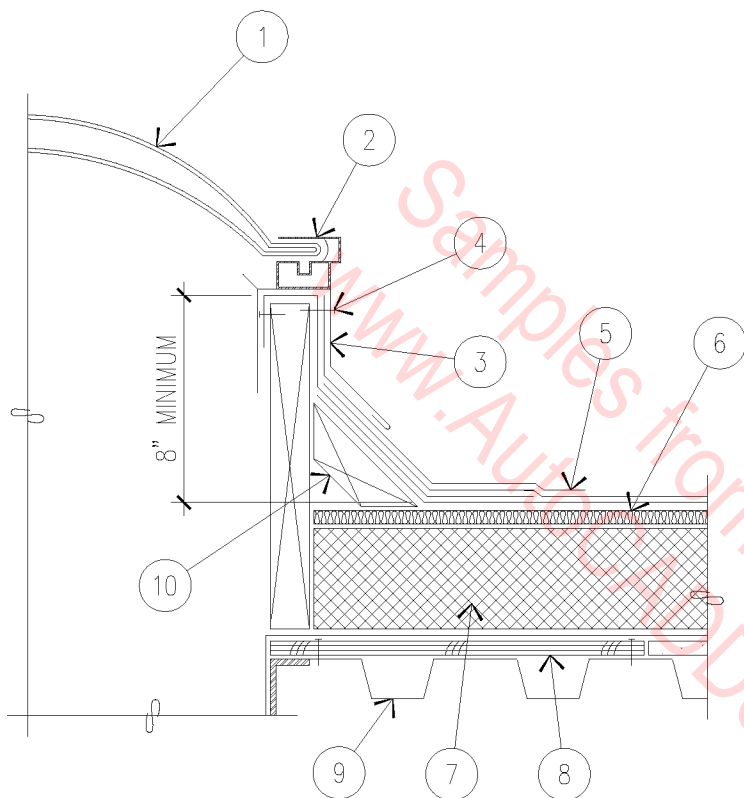


OPERABLE SKYLIGHT DETAIL



6" = 1'-0"

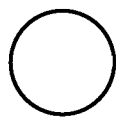
07E-1005



1. DOUBLE DOME SKYLIGHT.
2. SKYLIGHT FRAME WITH WEEP HOLES.
3. CAP FLASHING.
4. FASTENERS.
5. BUILT-UP ROOFING - SEE SPECIFICATIONS.
6. PRIMARY INSULATION.
7. OPTIONAL AIR/VAPOR BARRIER.
8. PLYWOOD.
9. METAL DECKING.
10. CANT STRIP.

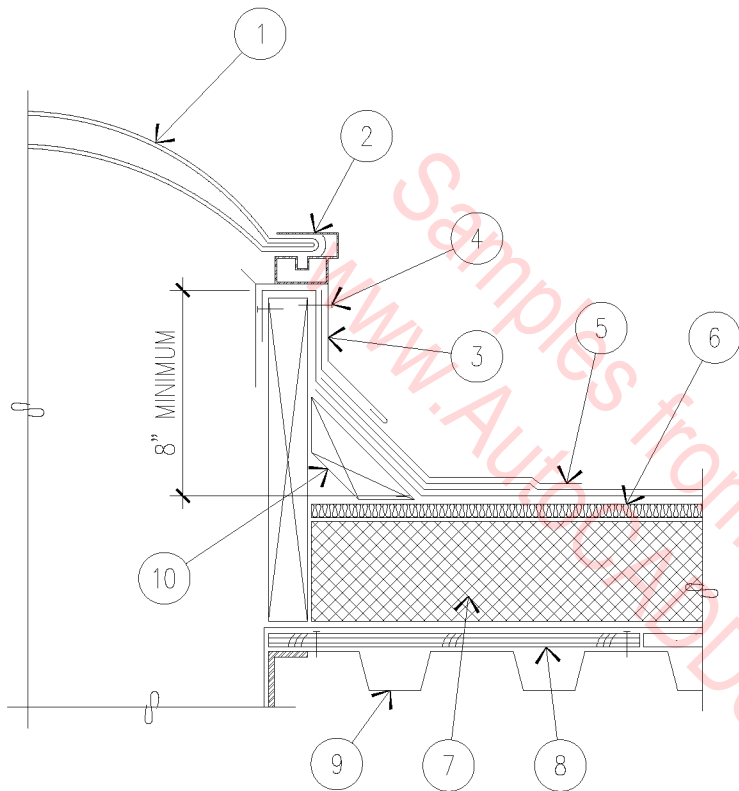
NOTE: CANT STRIPS ARE NOT REQUIRED WHEN CAP FLASHING OR ALL PLIES ARE THERMOFUSED.

EQUIPMENT STRUCTURAL SUPPORT



1 1/2" = 1'-0"

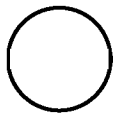
07E-1006



1. DOUBLE DOME SKYLIGHT.
2. SKYLIGHT FRAME WITH WEEP HOLES.
3. CAP FLASHING.
4. FASTENERS.
5. BUILT-UP ROOFING - SEE SPECIFICATIONS.
6. PRIMARY INSULATION.
7. OPTIONAL AIR/VAPOR BARRIER.
8. PLYWOOD.
9. METAL DECKING.
10. CANT STRIP.

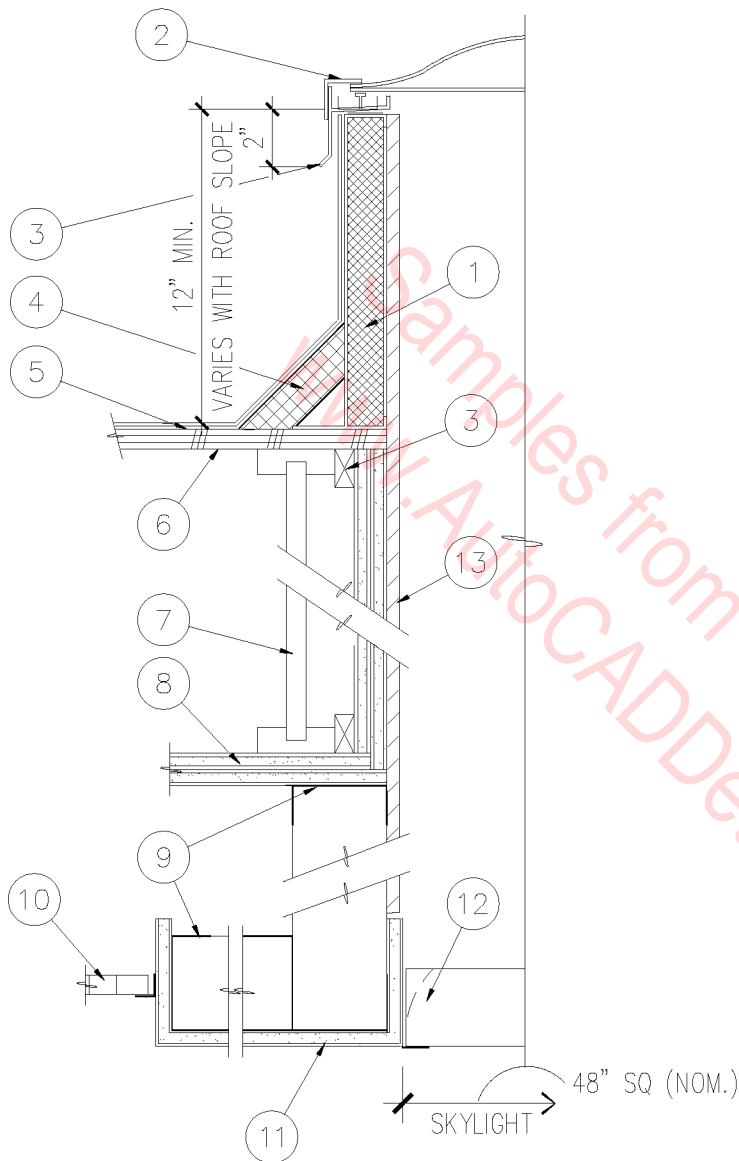
NOTE: CANT STRIPS ARE NOT REQUIRED WHEN CAP FLASHING OR ALL PLIES ARE THERMOFUSED.

EQUIPMENT STRUCTURAL SUPPORT



1 1/2" = 1'-0"

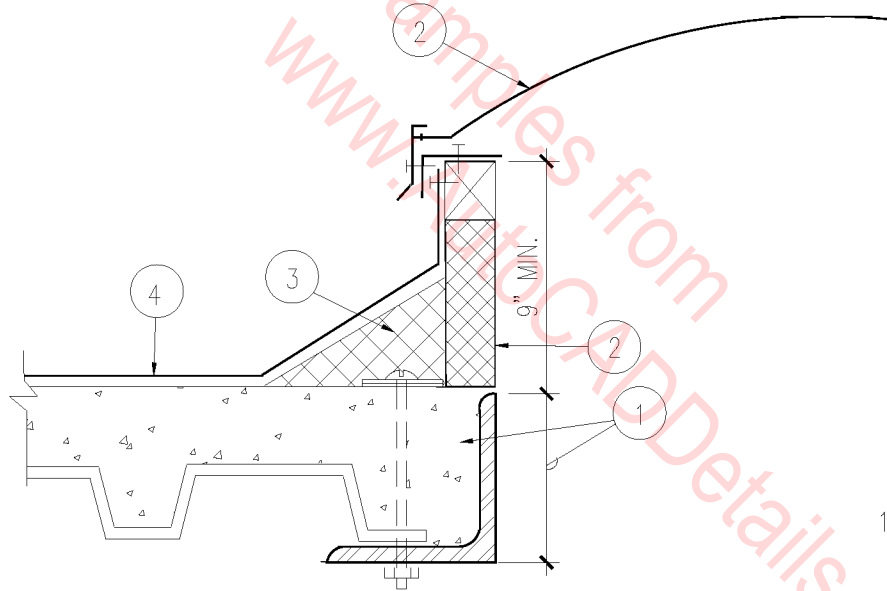
07E-1006



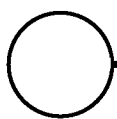
1. PREFABRICATED EQUIPMENT ROOF CURB.
2. SKYLIGHT.
3. BLOCKING AS REQUIRED.
4. 4" CANT.
5. MODIFIED BITUMEN REINFORCED COMPOSITE SHEET ROOFING SYSTEM.
6. PLYWOOD DECK.
7. WOOD JOIST.
8. ONE HR. RATED ROOF SYSTEM. TWO LAYERS OF 5/8" TYPE 'X' GYP. BD.
9. 3-5/8" METAL STUDS AT 16" O.C.
10. ACOUSTICAL CEILING PANEL.
11. GYP. BD. SOFFIT.
12. PARABOLIC LENS TO MATCH FLUORESCENT FIXTURES.
13. 1/2" 'CELOTEX' INSULATION BOARD WITH ALUMINUM FOIL BOTH SIDES CLEAR SIDE FACING OUT. TAPE ALL CORNERS WITH FOIL TAPE.

○ SKYLIGHT WELL
 1 1/2" = 1'-0"

07E-2001



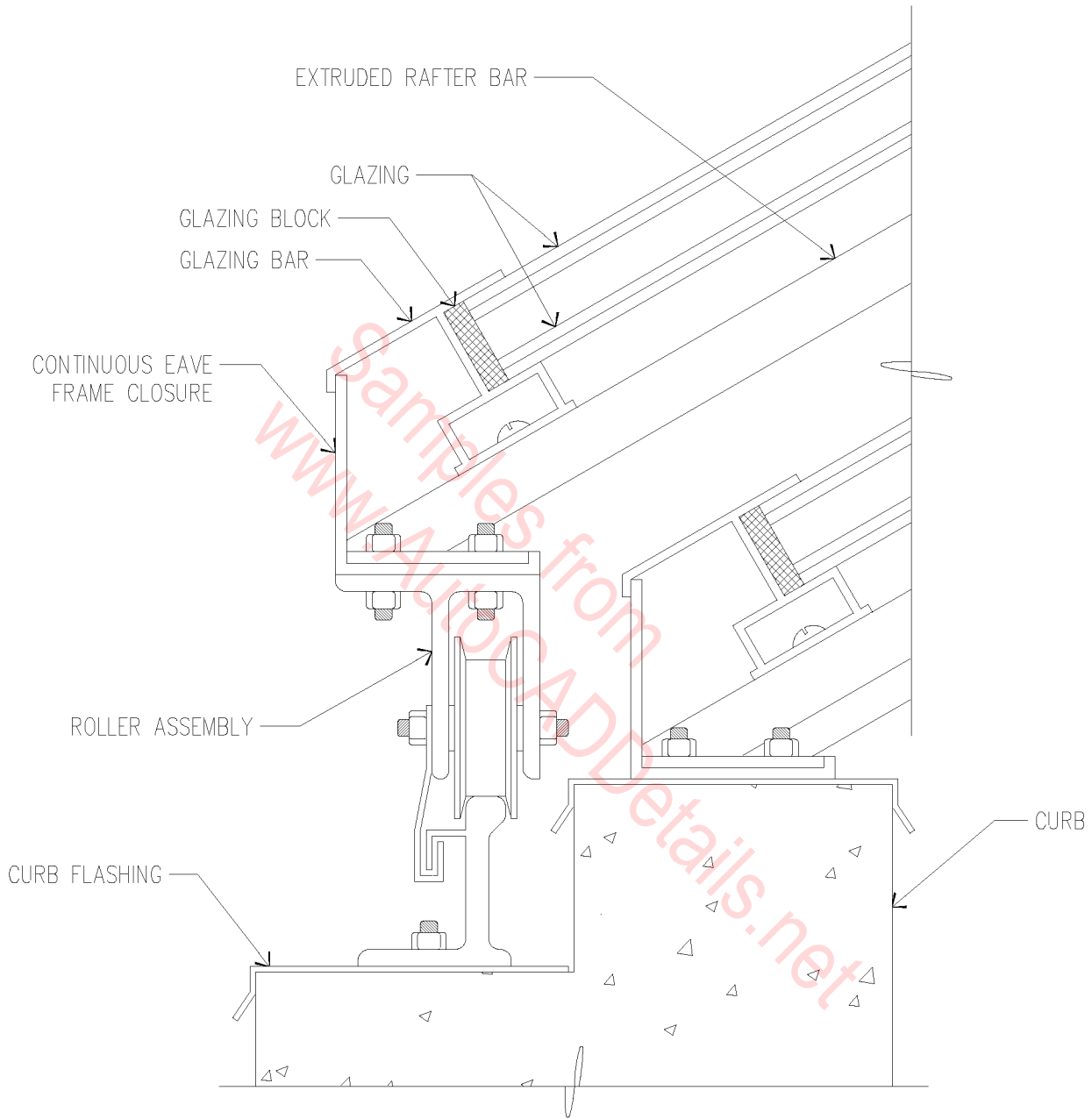
1. ANGLE IRON FRAME ALL AROUND OPENING. TAPER TO CREATE LEVEL INSTALLATION.
2. PREFABRICATED SKYLIGHT UNIT BOLTED TO FRAME @ 12" O.C. ALL AROUND.
3. 4" CANT STRIP.
4. MEMBRANE ROOFING OVER LIGHTWEIGHT FILL OVER 1 1/2" METAL DECKING.



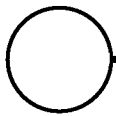
SKYLIGHT CURB

SCALE: 1 1/2" = 1'-0"

07E-2002

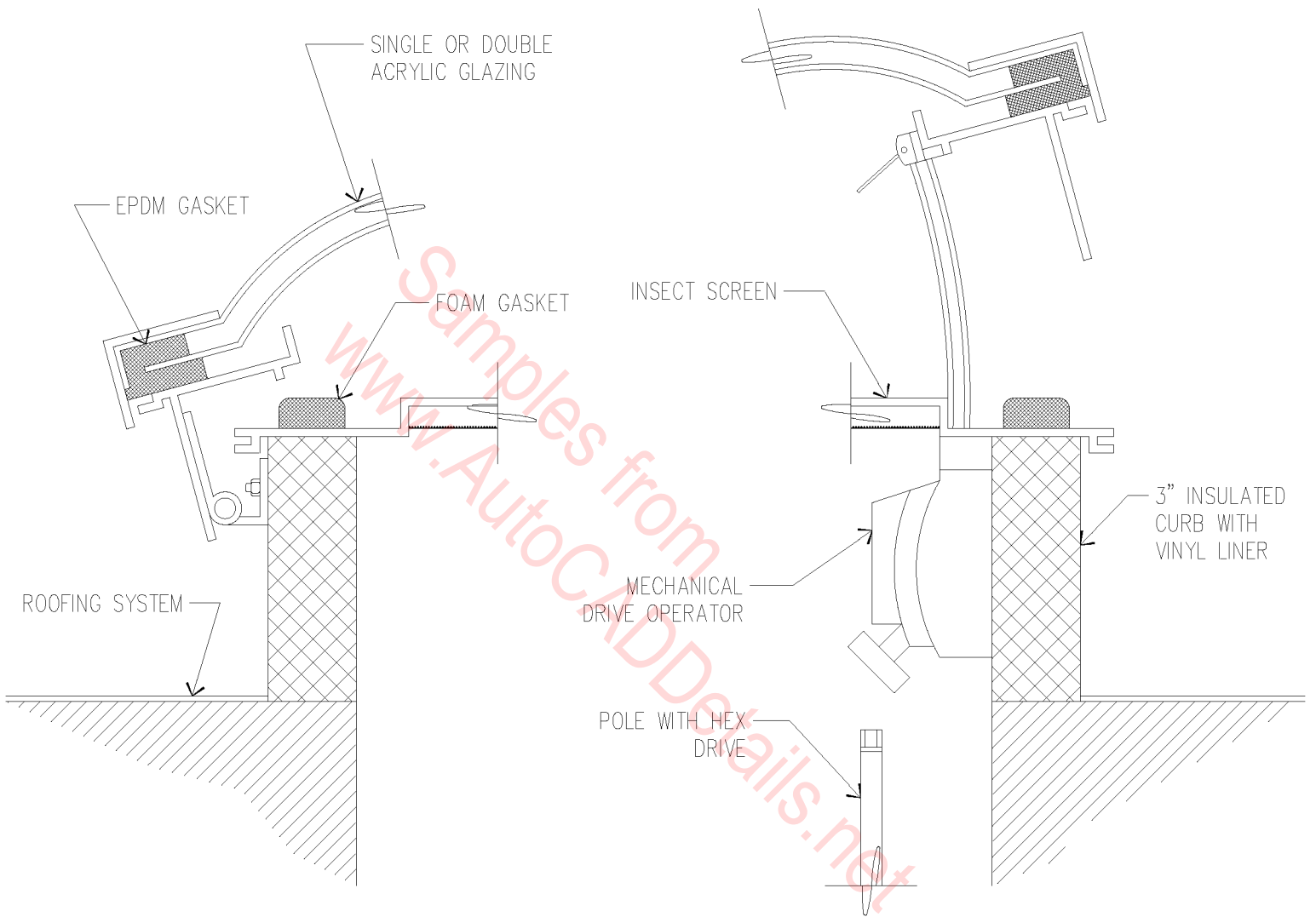


OPERABLE
SKYLIGHT DETAIL

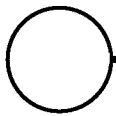


6" = 1'-0"

07E-3001



OPERABLE
SKYLIGHT DETAIL



6" = 1'-0"

07E-3002