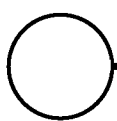


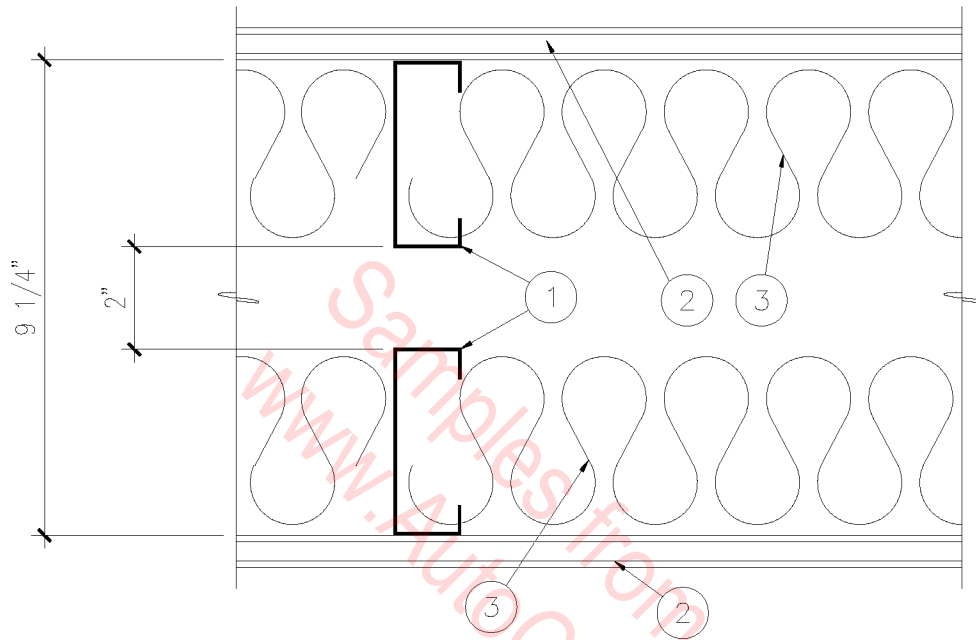
1. FINISH GRADE.
2. EXTERIOR FINISH SYSTEM.
3. 8" MASONRY WALL.
4. 2 X 8 BEVELED SILL BLOCK PAINTED TO MATCH ALUMINUM FRAME.
5. PLASTIC LAM. SILL.
6. 12" BLOCK.
7. CERAMIC TILE OVER THINSET TO 48" A.F.F.
8. 1/2" FILLED EXPANSION CAULK AROUND ENTIRE PERIMETER.
9. FINISH FLOOR (SEE SCHEDULE).
10. 4" CONCRETE SLAB.
11. 12" C.M.U. STEM.
12. 1-1/2" CELLULAR GLASS INSULATION.
13. CAULK AROUND WINDOW FRAME. SEALANT COLOR TO MATCH ALUMINUM FRAME.



WINDOW SILL

SCALE: 1" = 1'-0"

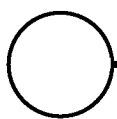
07A-2001



CONSTRUCTION SIMILAR TO
GA FILE NO. WP 5005
STC : 64

1. 3-5/8" METAL STUDS AT 16" O.C.
2. 5/8" TYPE 'X' GYPSUM BOARD.
3. 3-1/2" ACOUSTICAL INSULATION BATTS.

NOTE: CONSTRUCT ACCORDING TO STANDARDS AND DETAILS
FOR SOUND INSULATION FROM GYPSUM
ASSOCIATION DESIGN MANUAL 12TH EDITION (GA-600-88).

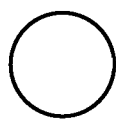
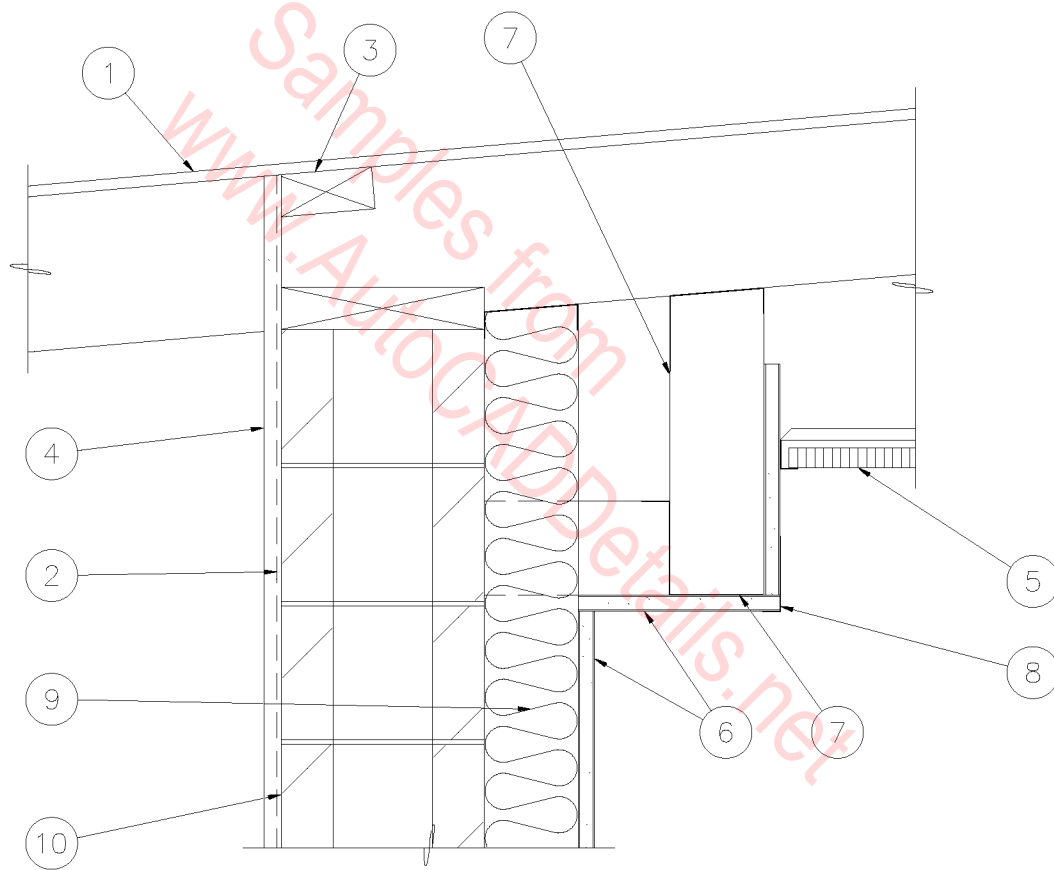


SOUND RESISTIVE WALL

SCALE: 3" = 1'-0"

07A-2002

- | | |
|---|--------------------------|
| 1. EXISTING ROOF STRUCTURE. | 7. 3-5/8" METAL STUDS. |
| 2. METAL LATH. | 8. METAL CORNER BEAD. |
| 3. 2x NAILER. | 9. R-11 BATT INSULATION. |
| 4. 5/8" CEMENT PLASTER APPLIED DIRECTLY TO BLOCK. | 10. MASONRY WALL. |
| 5. LAY-IN CEILING PANEL. | |
| 6. 5/8" TYPE 'X' GYP. BOARD. | |



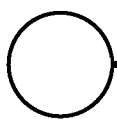
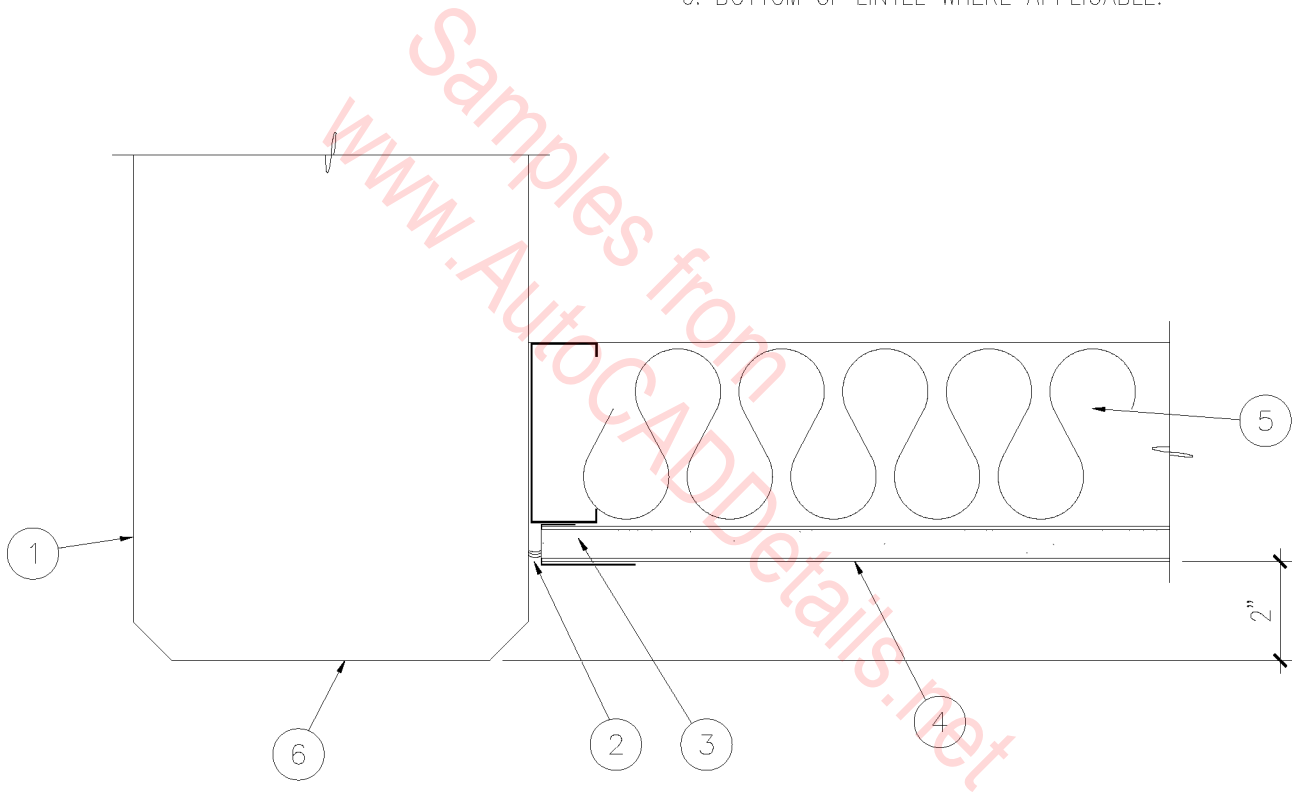
INTERIOR SOFFIT

SCALE: 1 1/2" = 1'-0"

07A-2003

1. MASONRY OR CONCRETE WALL.
2. SEALANT.
3. CASING BEAD.

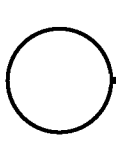
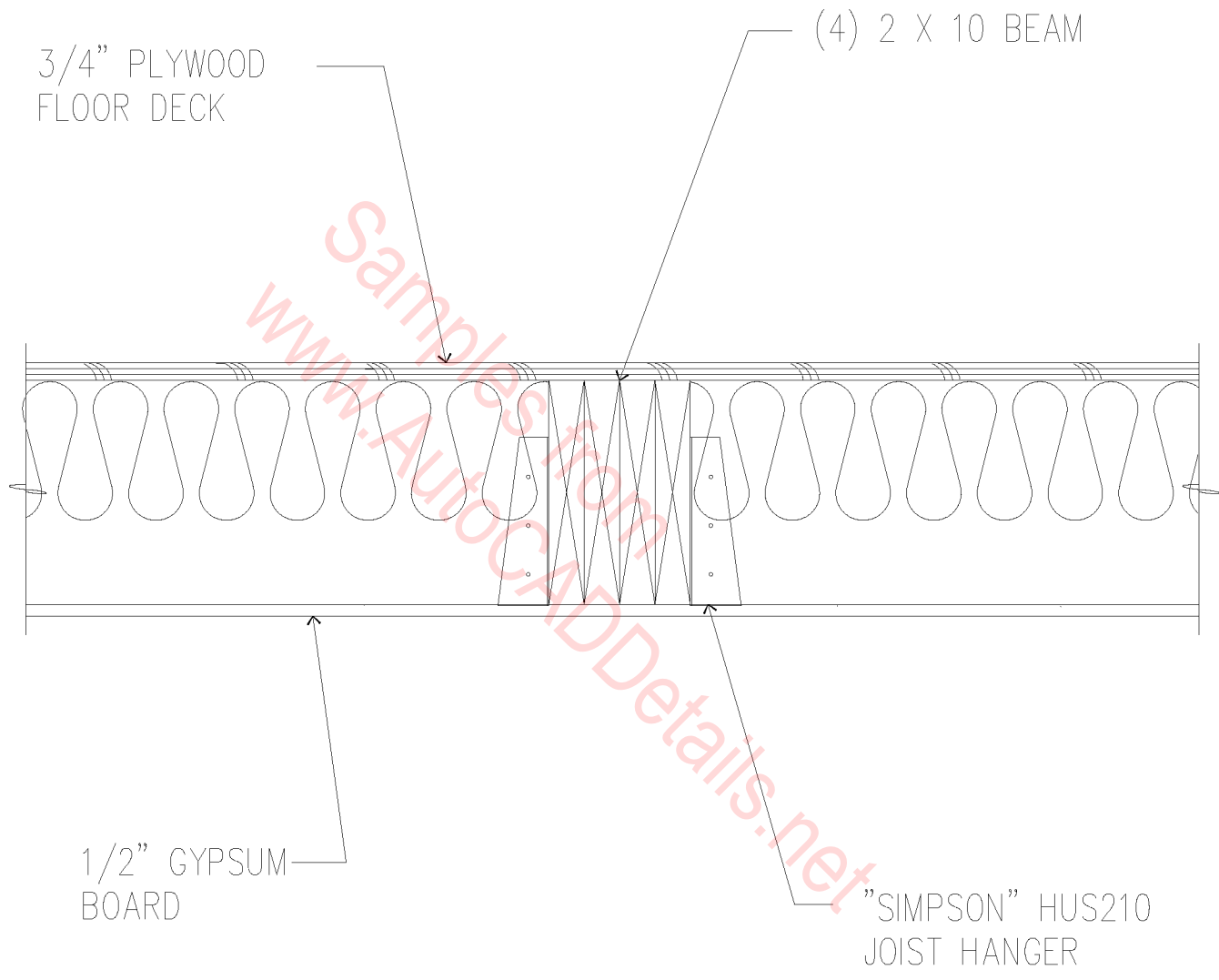
4. EXTERIOR FINISH SYSTEM ON
5/8" TYPE EXTERIOR GYPSUM
SHEATHING ON 3-5/8" METAL STUDS
AT 16" O.C. CEILING JOISTS.
5. R-11 SOUND BATT INSULATION.
6. BOTTOM OF LINTEL WHERE APPLICABLE.



SOFFIT

SCALE: 3" = 1'-0"

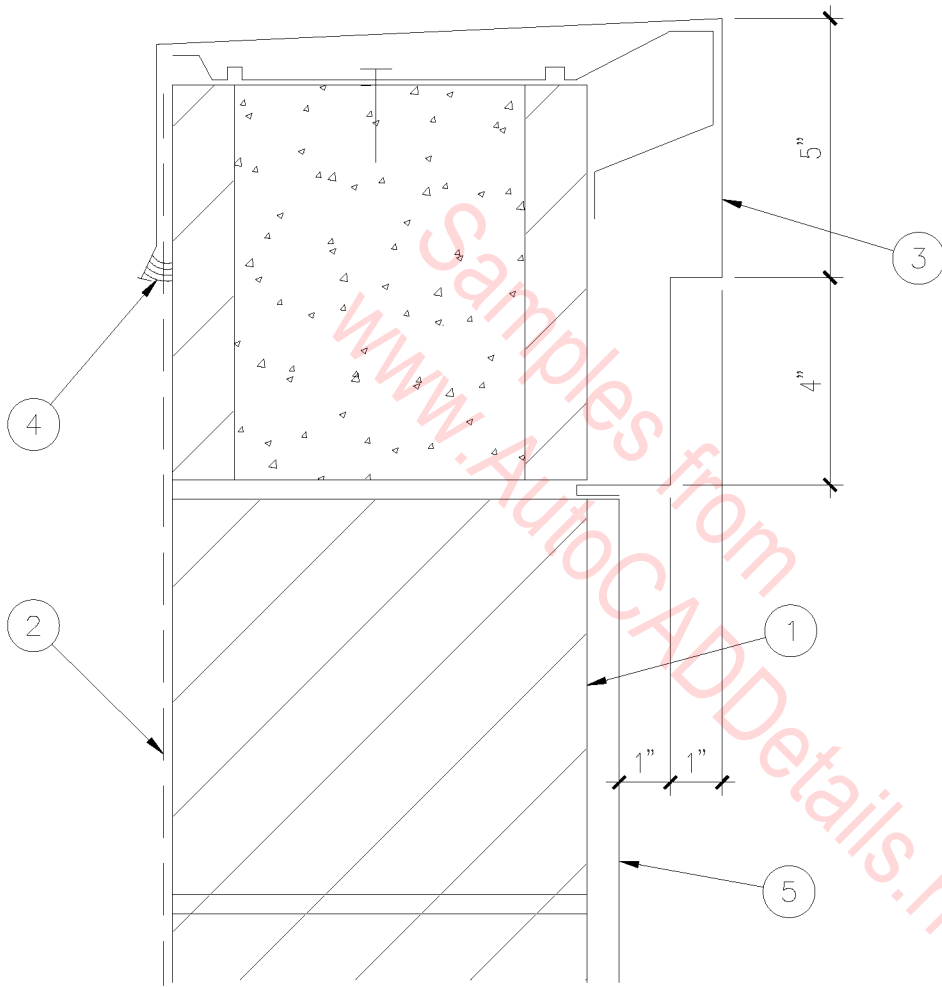
07A-2004



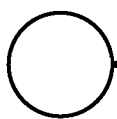
JOIST CONNECTION

1 1/2" = 1'-0"

07A-2005



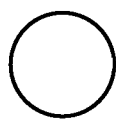
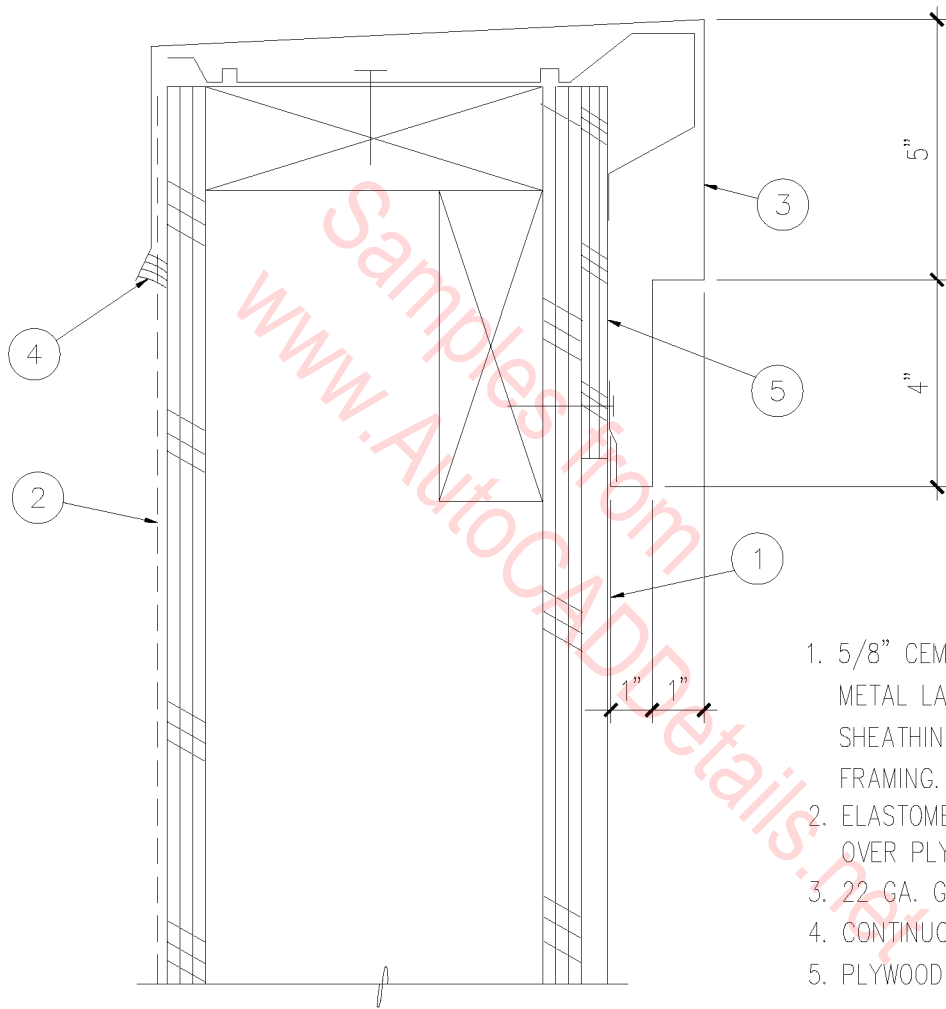
1. MASONRY WALL.
2. ELASTOMERIC COATING.
3. 22 GA. G.I. COPING.
4. SEALANT CONTINUOUS.
5. 5/8" CEMENT PLASTER.



PARAPET CAP FLASHING

SCALE: 3" = 1'-0"

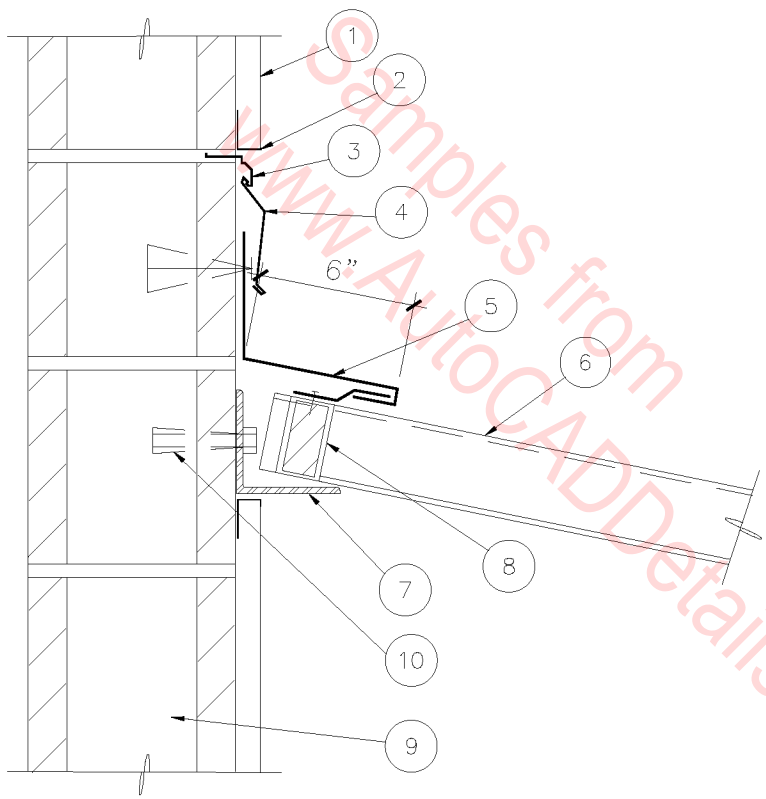
07A-3001



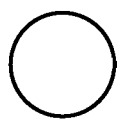
PARAPET CAP

SCALE: 3" = 1'-0"

07A-3002



1. CEMENT PLASTER.
2. 'J' MOLDING.
3. REGLET.
4. COUNTERFLASHING.
5. METAL FLASHING.
6. METAL DECK.
7. STRUCTURAL ANGLE.
8. NEOPRENE AND METAL CLOSER.
9. MASONRY WALL.
10. EXPANSION ANCHOR.

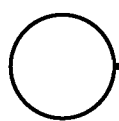
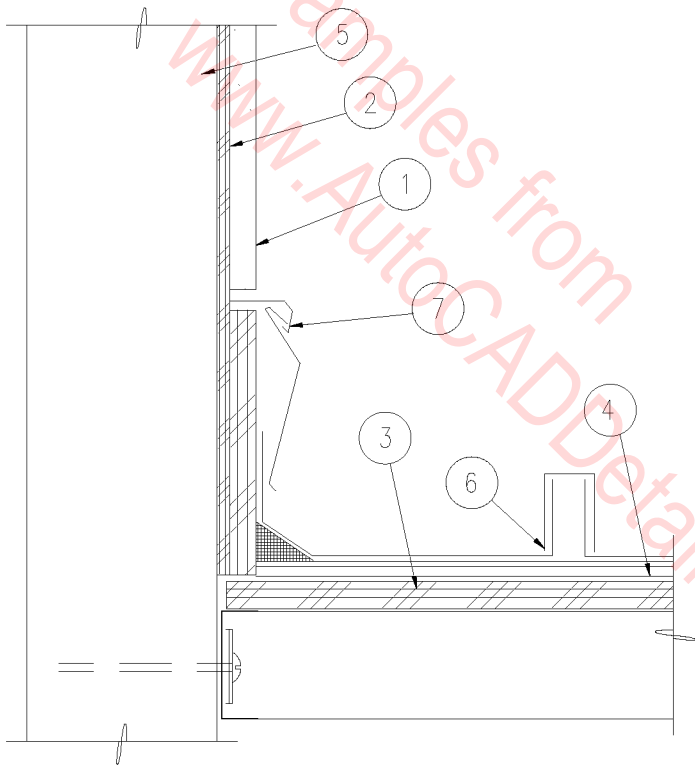


METAL DECK ROOF EDGE

SCALE: 1 1/2" = 1'-0"

07A-3003

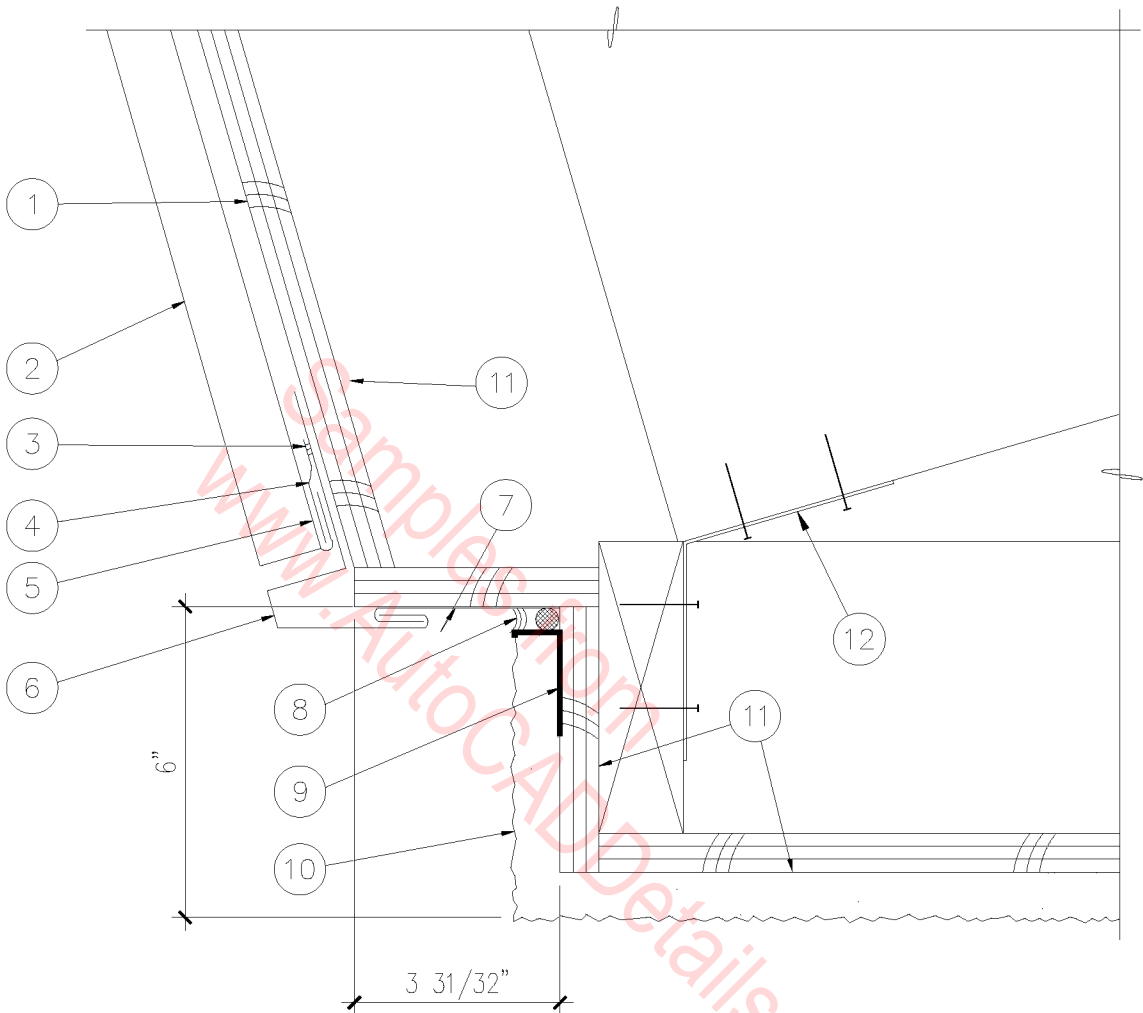
1. CEMENT 3/4" PLASTER.
2. 3/8" FIRE TREATED PLYWOOD SHEATHING.
3. 3/4" FIRE TREATED PLYWOOD SHEATHING.
4. 5/8" GYP. BOARD.
5. METAL STUD FRAMING.
6. METAL ROOFING.
7. REGLET AND FLASHING.



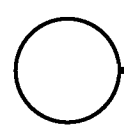
METAL ROOF

SCALE: 1 1/2" = 1'-0"

07A-3004



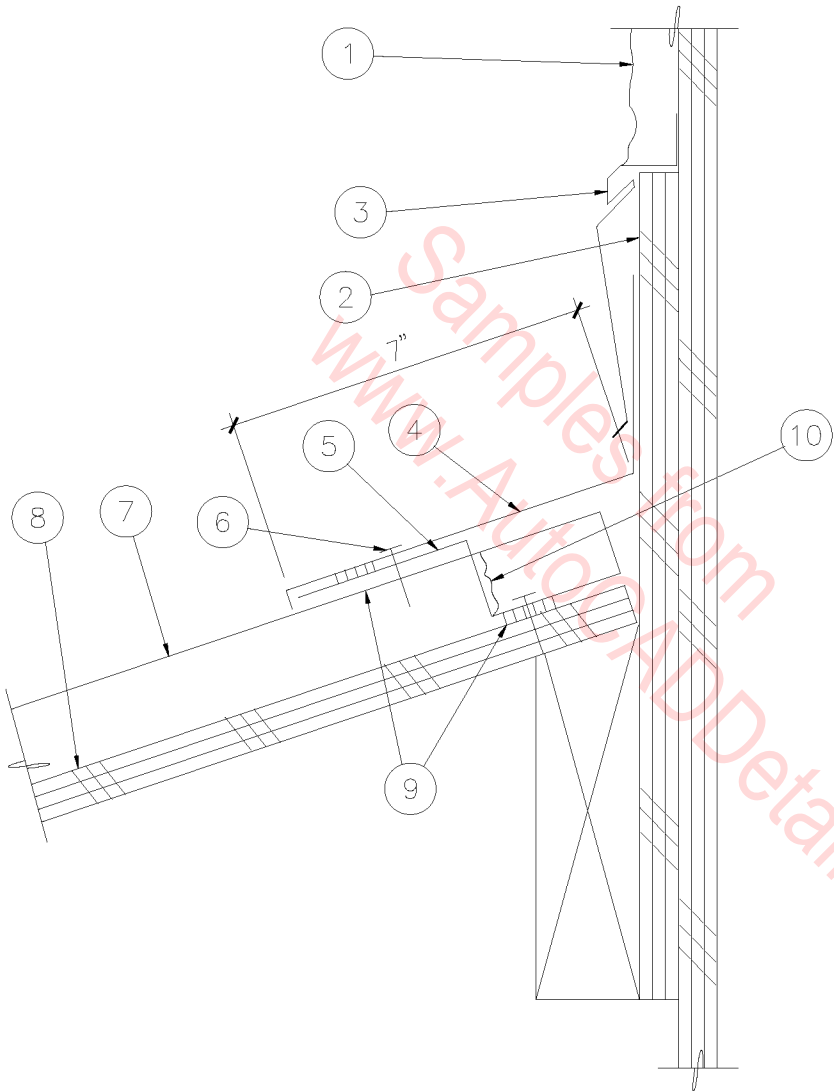
- | | |
|--|--|
| 1. PLYWOOD SHEATHING. | 6. METAL DRIP FLASHING. |
| 2. STANDING SEAM PANEL SYSTEM. | 7. METAL SOFFIT TRIM. |
| 3. CONT. TAPE SEALANT BETWEEN HOOK STRIP AND DRIP FLASHING. NAIL THROUGH POINT OF FLASHING AT 12" O.C. | 8. SEALANT & BACKER ROD. |
| 4. METAL HOOK STRIP. | 9. PLASTER CASING TRIM. |
| 5. MODIFY PANEL END TO CREATE HOOK. | 10. 3/4" CEMENT PLASTER ON METAL LATH. |
| | 11. FACE OF FASCIA FRAMING. |
| | 12. SIMPSON A35 ANGLE CLIP. |



METAL ROOF FASCIA

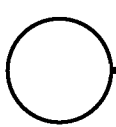
3" = 1'-0"

07A-3005



1. CEMENT PLASTER ON METAL LATH & PLYWOOD SHEATHING OVER 2X WOOD FRAMING.
2. PLYWOOD BLOCKING.
3. METAL COUNTERFLASHING.
4. METAL FLASHING.
5. METAL Z-CLOSURE.
6. POP RIVET FLASHING TO Z-CLOSURE AT 24" O.C. MAX.
7. STANDING SEAM ROOF PANEL SYSTEM.
8. PLYWOOD ROOF DECK.
9. CONT. TAPE SEALANT BETWEEN FLASHING & Z-CLOSURE, AND BETWEEN Z-CLOSURE & ROOF PANEL.
10. CAULK BACK SIDE OF Z-CLOSURE AGAINST STANDING SEAM.

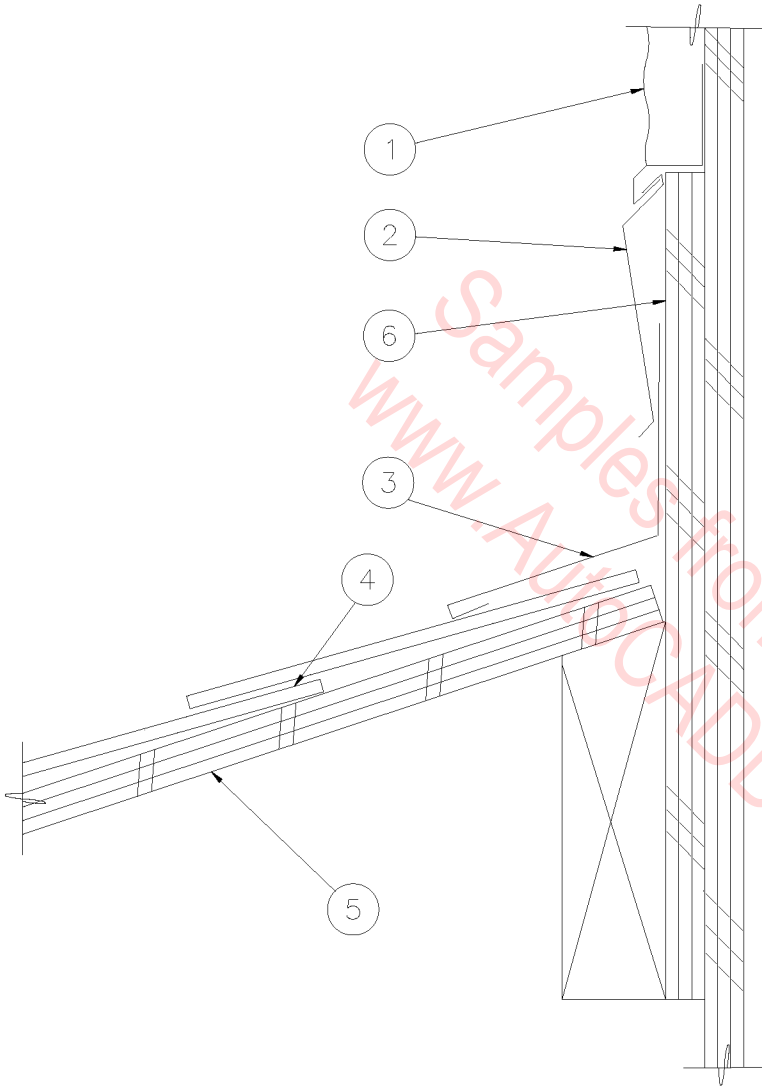
NOTE: ALL METAL REGLETS, FLASHING, COUNTERFLASHING AND Z-CLOSURES TO BE FINISHED TO MATCH ROOF PANEL SYSTEM.



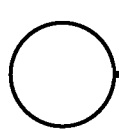
METAL ROOF AT WALL

SCALE: 3" = 1'-0"

07A-3006



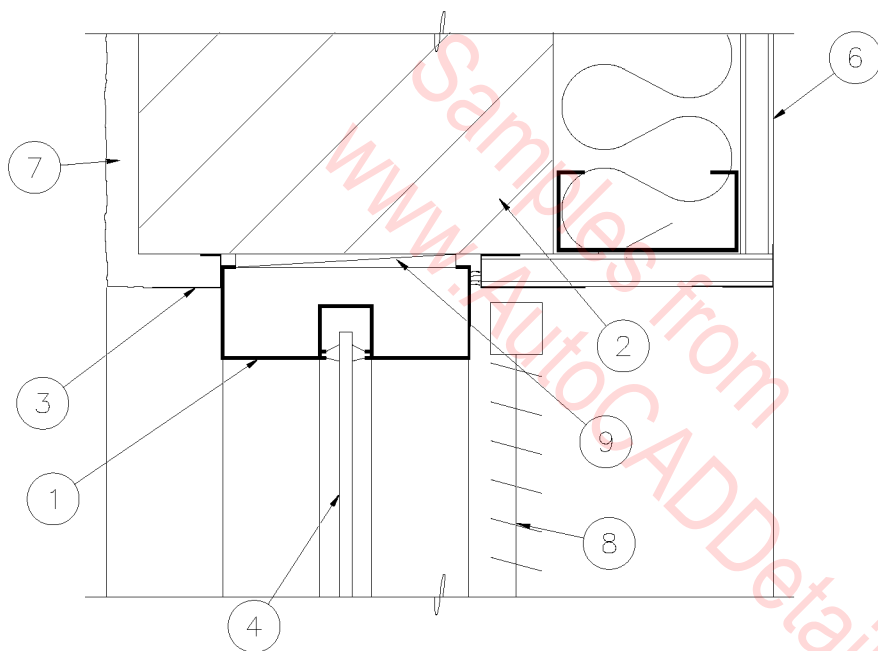
1. CEMENT PLASTER ON METAL LATH & PLYWOOD SHEATHING OVER 2X WOOD FRAMING.
2. METAL COUNTERFLASHING.
3. METAL FLASHING.
4. ASPHALT SHINGLES WITH WATERPROOF UNDERLAYMENT PER MANUFACTURER'S SPECIFICATIONS.
5. PLYWOOD ROOF DECK.
6. PLYWOOD BLOCKING.



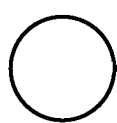
FLASHING @ ROOF EDGE

3" = 1'-0"

07A-3007



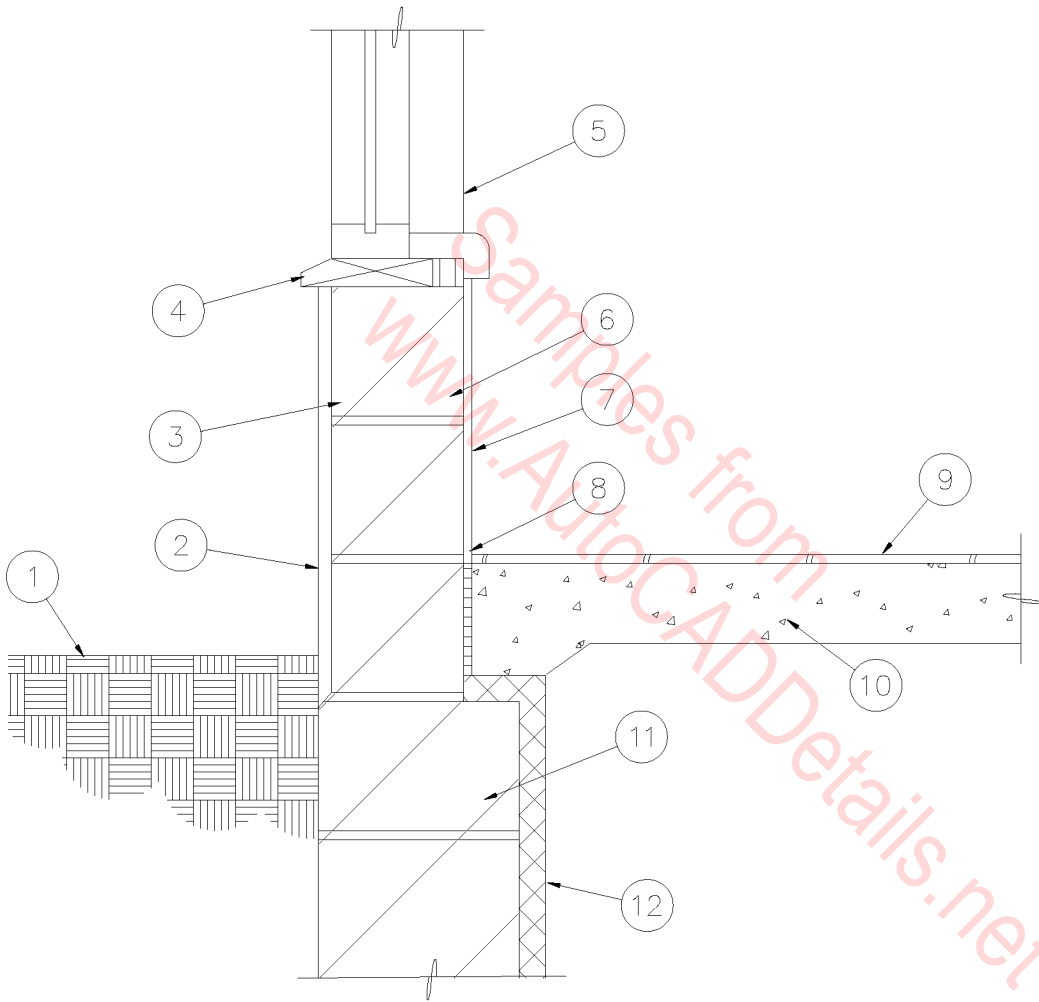
1. 1-3/4" X 4-1/2" ALUMINUM FRAMING SYSTEM.
2. MASONRY WALL.
3. 'J' MOLD & SEALANT - TYPICAL BOTH SIDES.
4. 1/4" GLASS.
5. CORNER BEAD - TYPICAL.
6. 5/8" GYP. BOARD ON 3-5/8" METAL STUDS WITH R-11 BATT INSULATION.
7. 5/8" CEMENT PLASTER.
8. WINDOW BLIND.
9. SHIM.



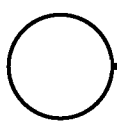
ALUMINUM FRAME

3" = 1'-0"

07A-3008



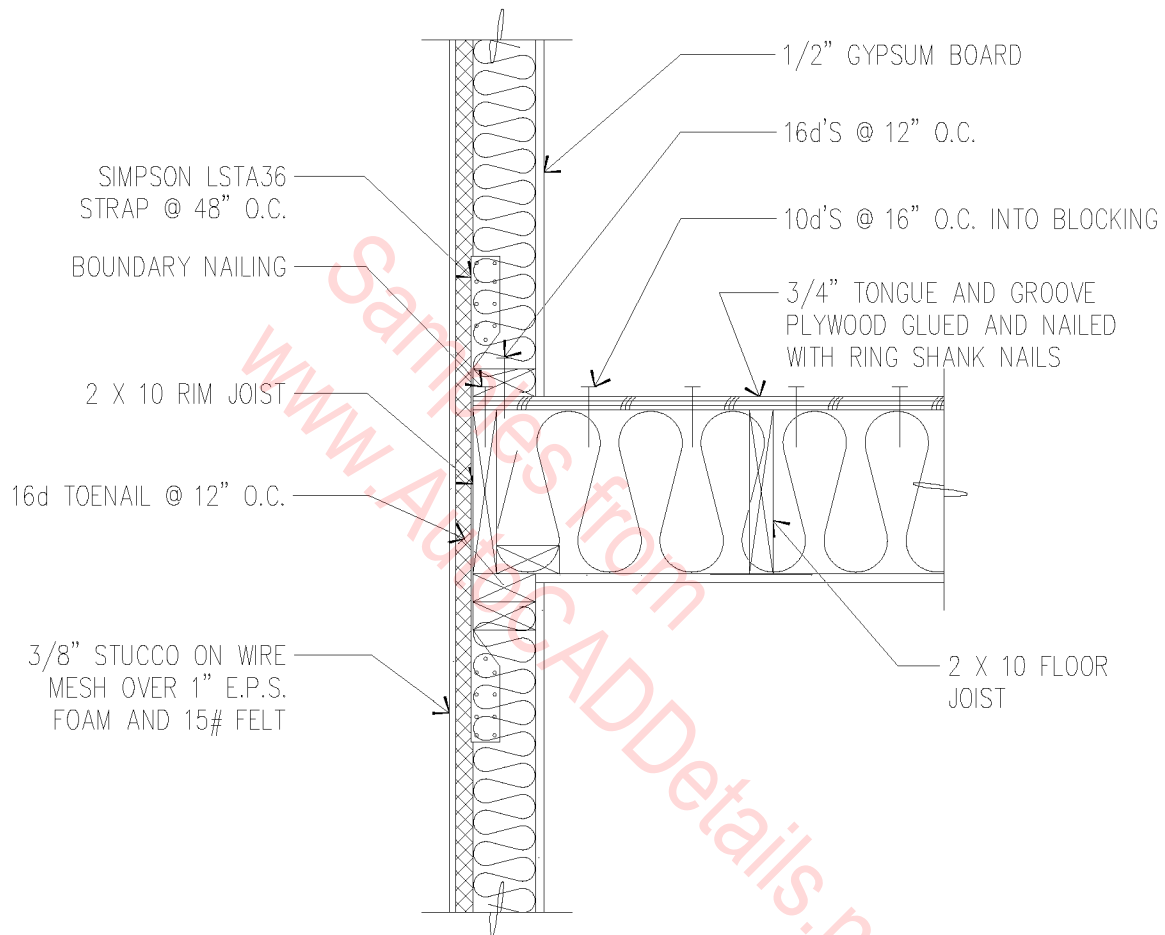
1. FINISH GRADE.
2. EXTERIOR FINISH SYSTEM.
3. 8" MASONRY WALL.
4. 2 X 8 BEVELED SILL BLOCK PAINTED TO MATCH ALUMINUM FRAME.
5. PLASTIC LAM. SILL.
6. 12" BLOCK.
7. CERAMIC TILE OVER THINSET TO 48" A.F.F.
8. 1/2" FILLED EXPANSION CAULK AROUND ENTIRE PERIMETER.
9. FINISH FLOOR (SEE SCHEDULE).
10. 4" CONCRETE SLAB.
11. 12" C.M.U. STEM.
12. 1-1/2" CELLULAR GLASS INSULATION.
13. CAULK AROUND WINDOW FRAME. SEALANT COLOR TO MATCH ALUMINUM FRAME.



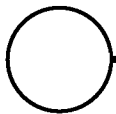
WINDOW SILL

SCALE: 1" = 1'-0"

07A-3009

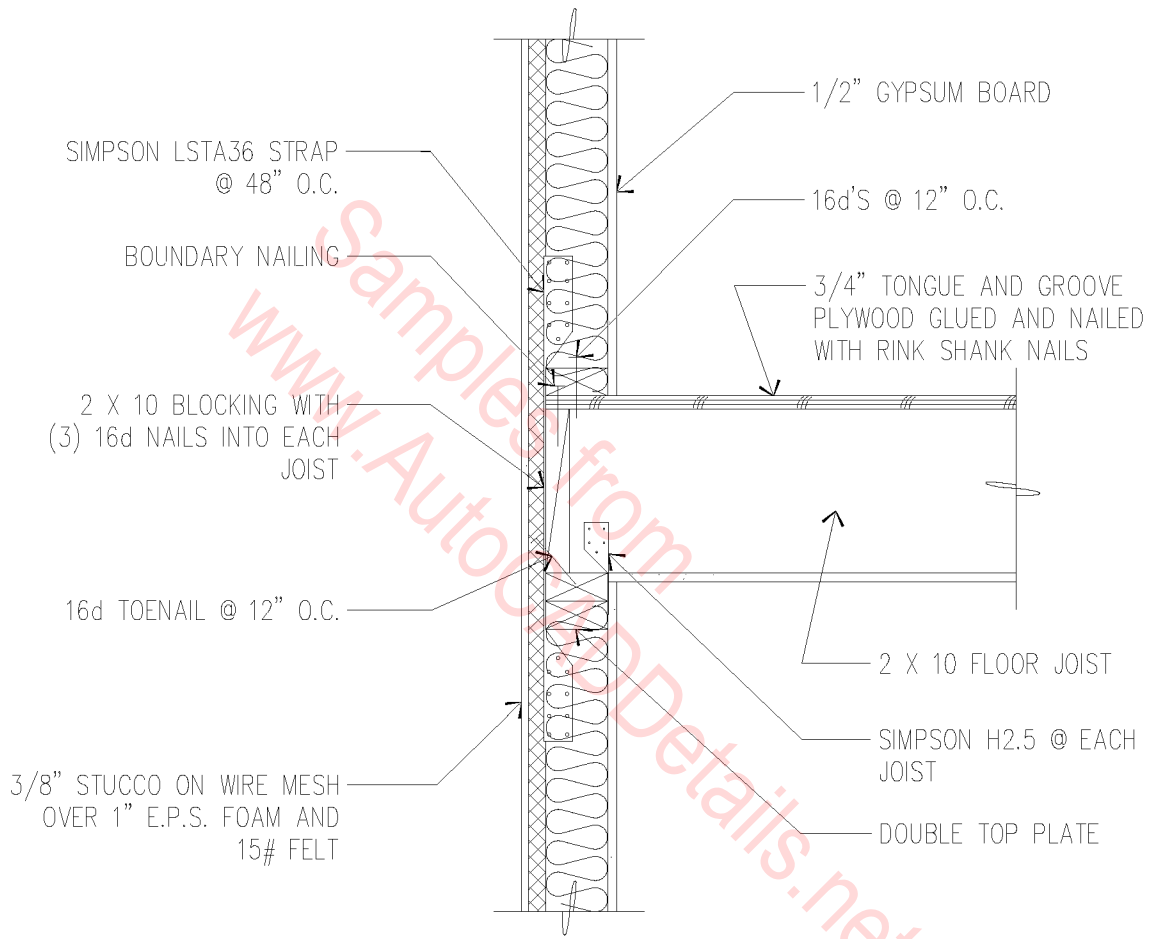


FLOOR JOIST BEARING @ WALL

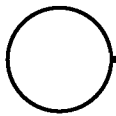


1" = 1'-0"

07A-3010

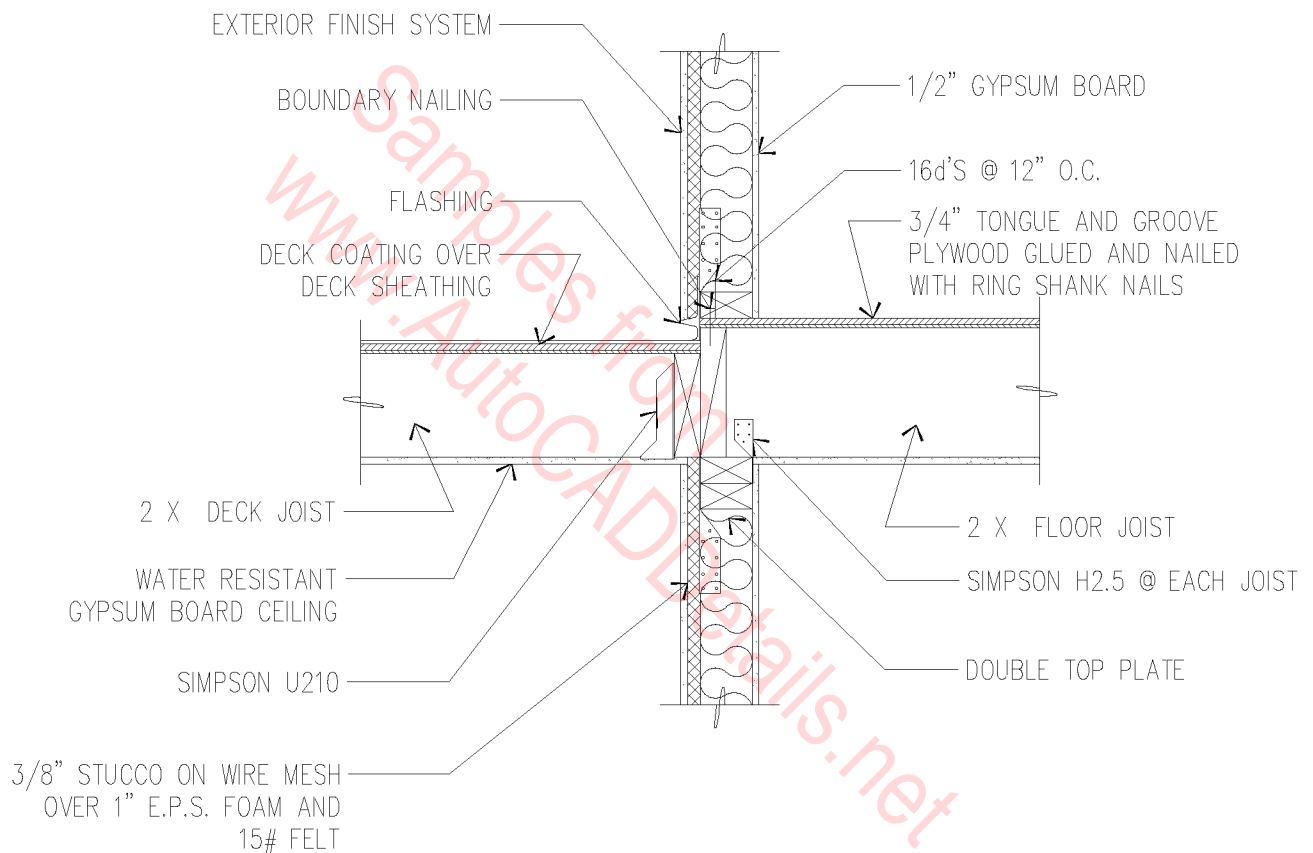


FLOOR JOIST BEARING @ WALL

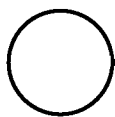


1" = 1'-0"

07A-3011

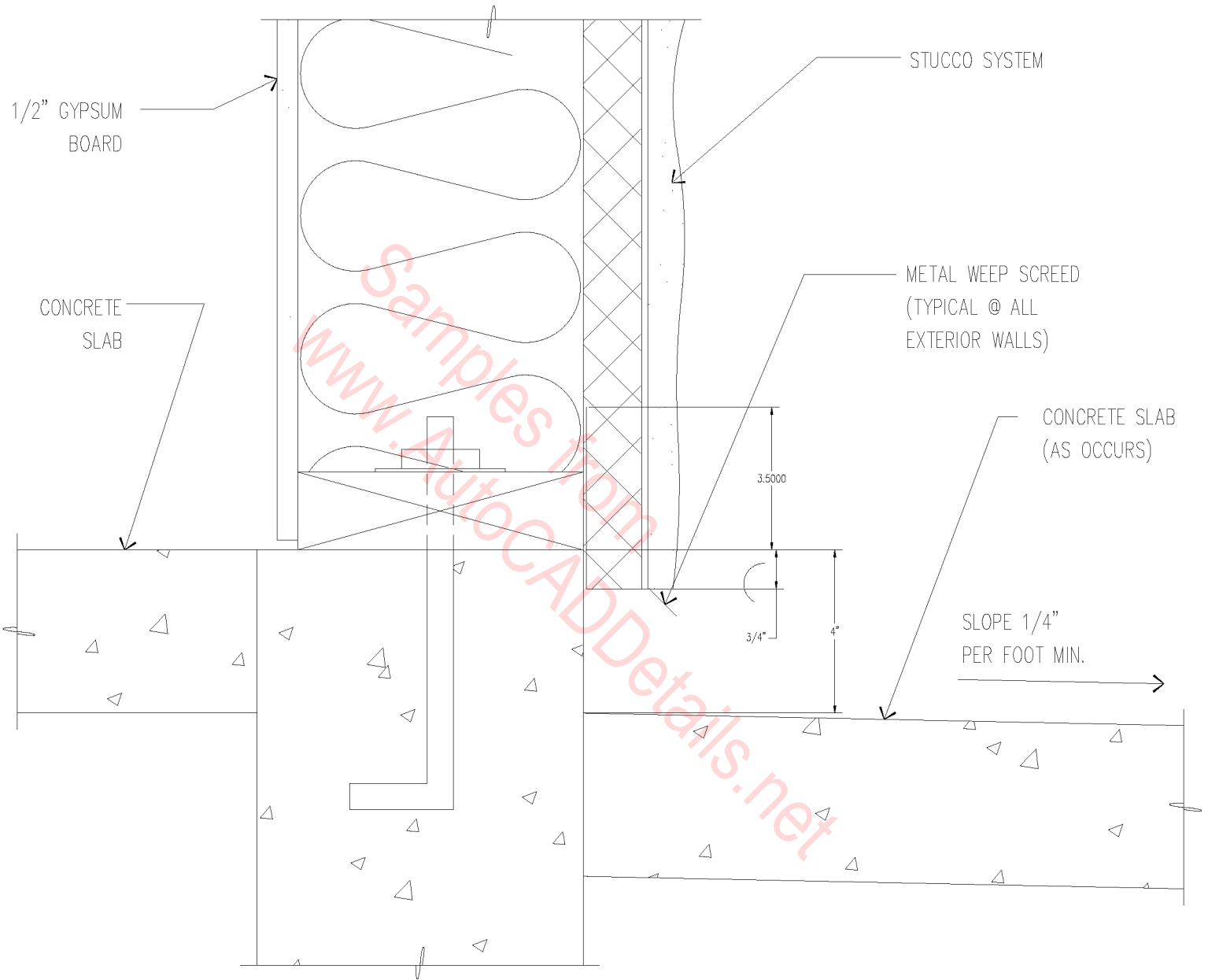


DECK JOIST BEARING @ WALL



3/4" = 1'-0"

07A-3012



1/2" GYPSUM BOARD

CONCRETE SLAB

STUCCO SYSTEM

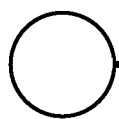
METAL WEEP SCREED (TYPICAL @ ALL EXTERIOR WALLS)

CONCRETE SLAB (AS OCCURS)

3.5000

3/4"

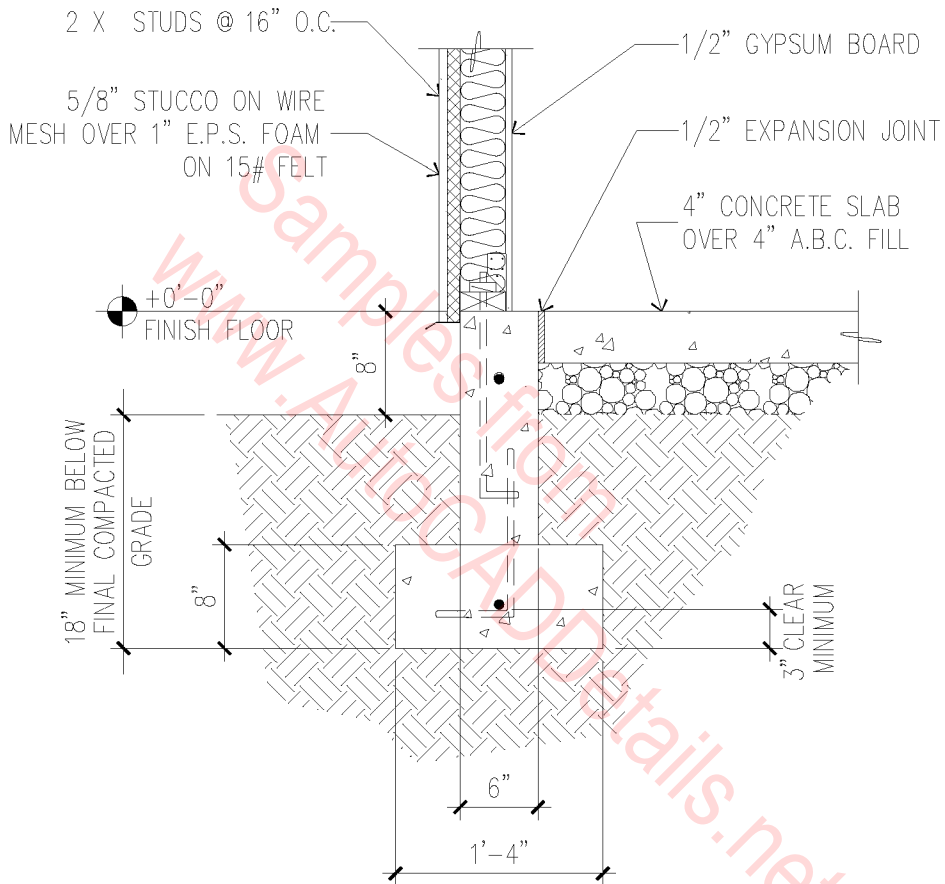
SLOPE 1/4" PER FOOT MIN.



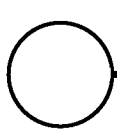
WEEP SCREED

3" = 1'-0"

07A-3013



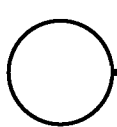
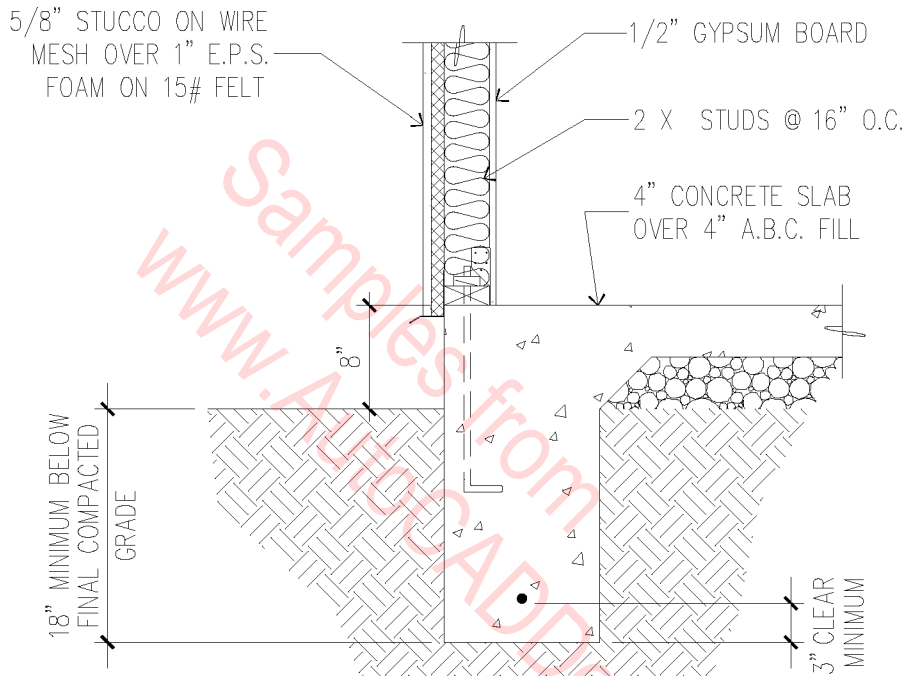
NOTE: SEE FLOOR PLAN FOR SHEAR WALL LOCATIONS AND NAILING



TYPICAL WALL FOOTING

3/4" = 1'-0"

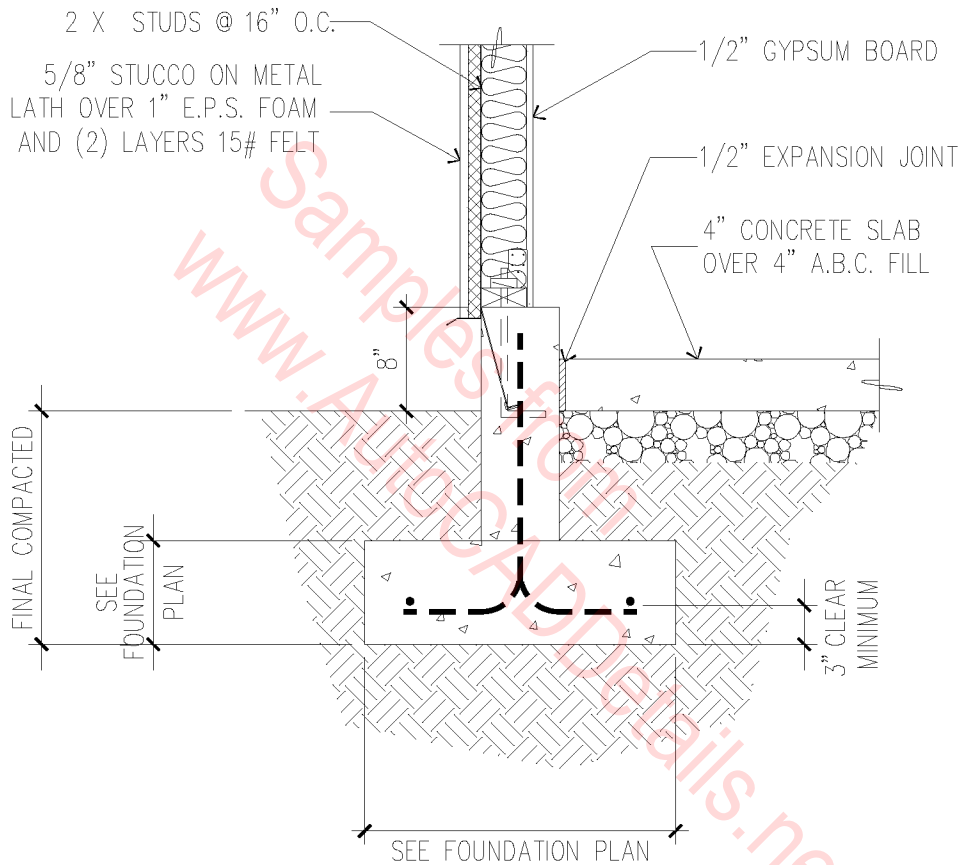
07A-3014



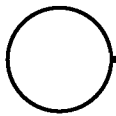
MONOLITHIC FOOTING

3/4" = 1'-0"

07A-3015

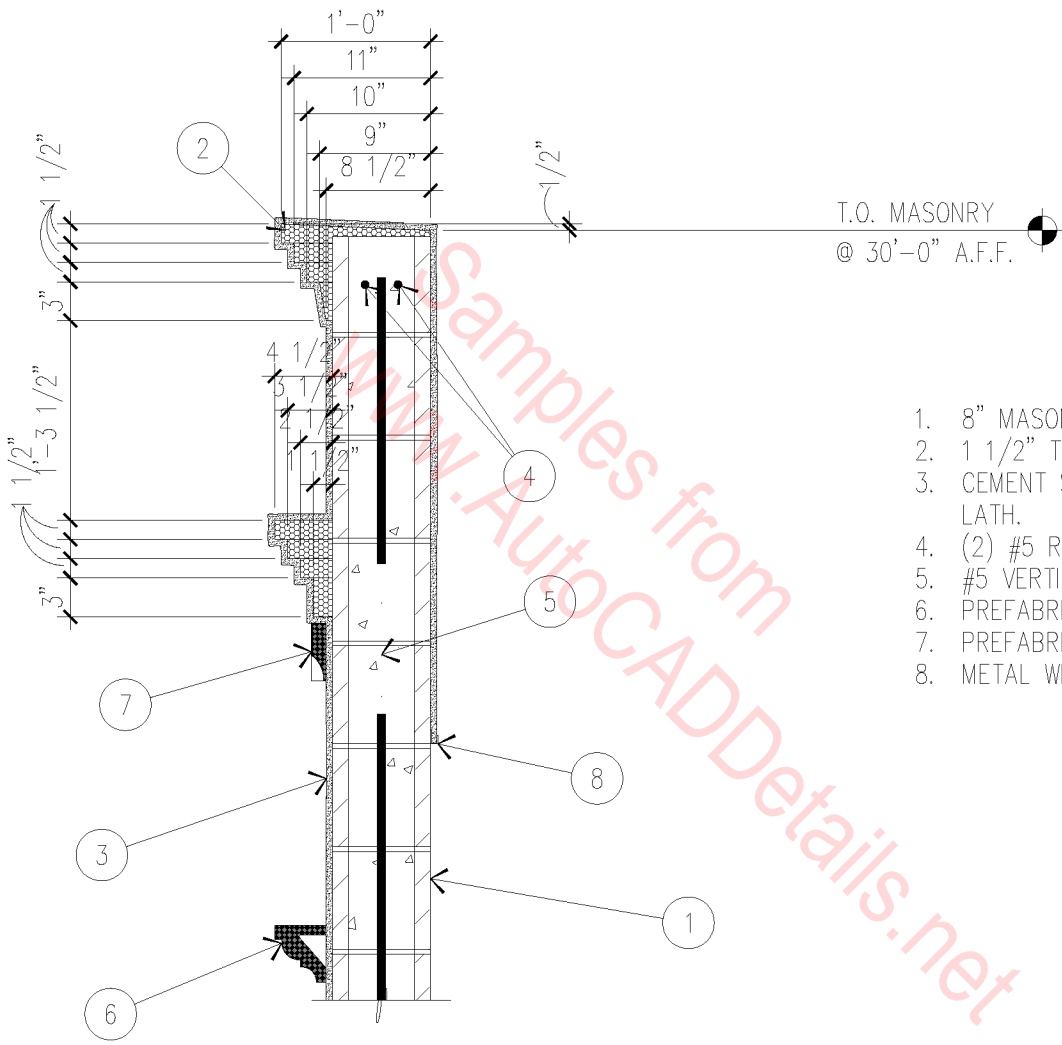


FOOTING @ BEARING WALL



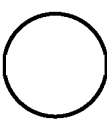
3/4" = 1'-0"

07A-3016



T.O. MASONRY
@ 30'-0" A.F.F.

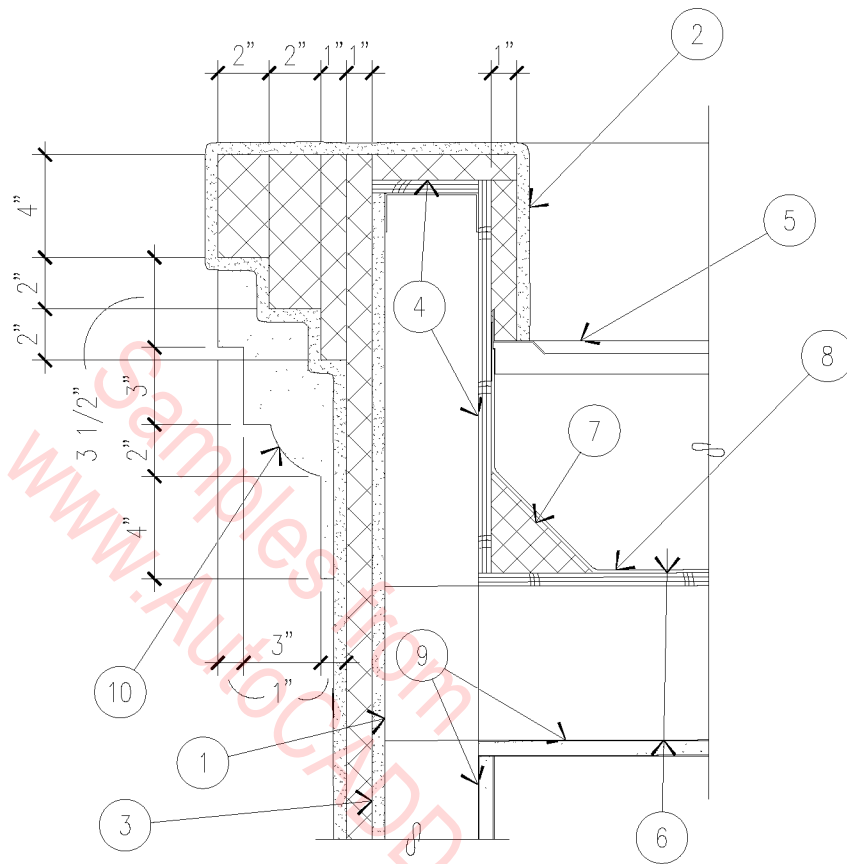
1. 8" MASONRY WALL.
2. 1 1/2" THICK RIGID INSULATION.
3. CEMENT STUCCO OVER METAL LATH.
4. (2) #5 REBAR HORIZONTAL CONTINUOUS.
5. #5 VERTICAL SEE STRUCTURAL.
6. PREFABRICATED FASCIA.
7. PREFABRICATED DENTIL MOLDING.
8. METAL WEEP SCREED / STUCCO STOP.



PARAPET

3/4" = 1'-0"

07A-3017



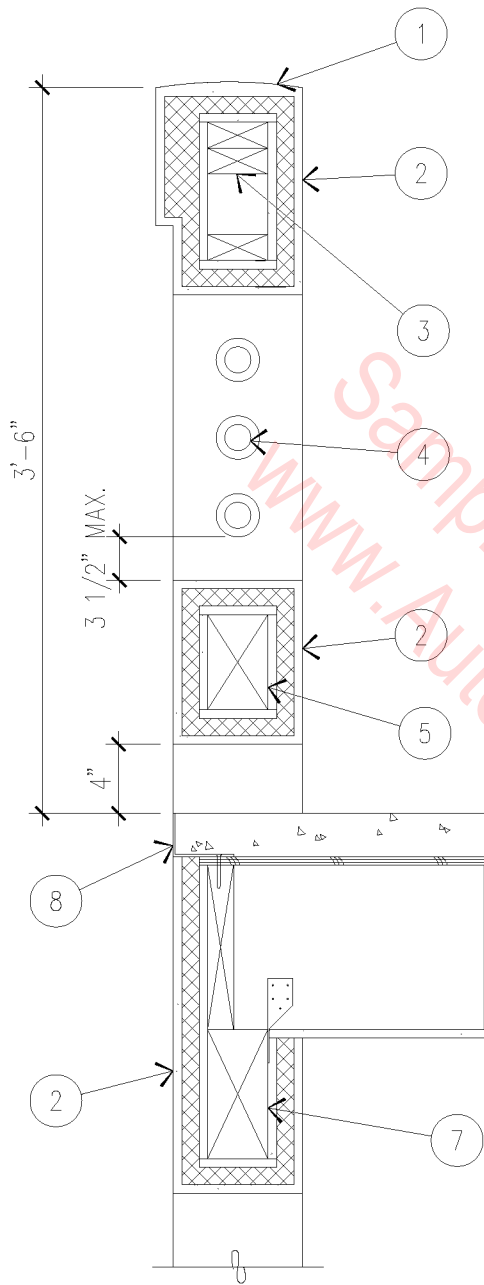
1. 3 5/8" METAL STUD WALL.
2. CEMENT STUCCO OVER METAL LATH AND RIGID INSULATION.
3. 1/2" GYPSUM SHEATHING.
4. 1/2" STRUCTURAL 1 PLYWOOD.
5. METAL STUCCO STOP / DRIP EDGE.

6. ROOF JOIST AND DECK - SEE STRUCTURAL.
7. 4" CANT STRIP.
8. SINGLE PLY MEMBRANE ROOF.
9. 5/8" GYPSUM BOARD.
10. RIGID FOAM BRACKET BEYOND.

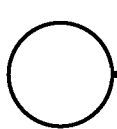
PARAPET WALL

1 1/2" = 1'-0"

07A-3018



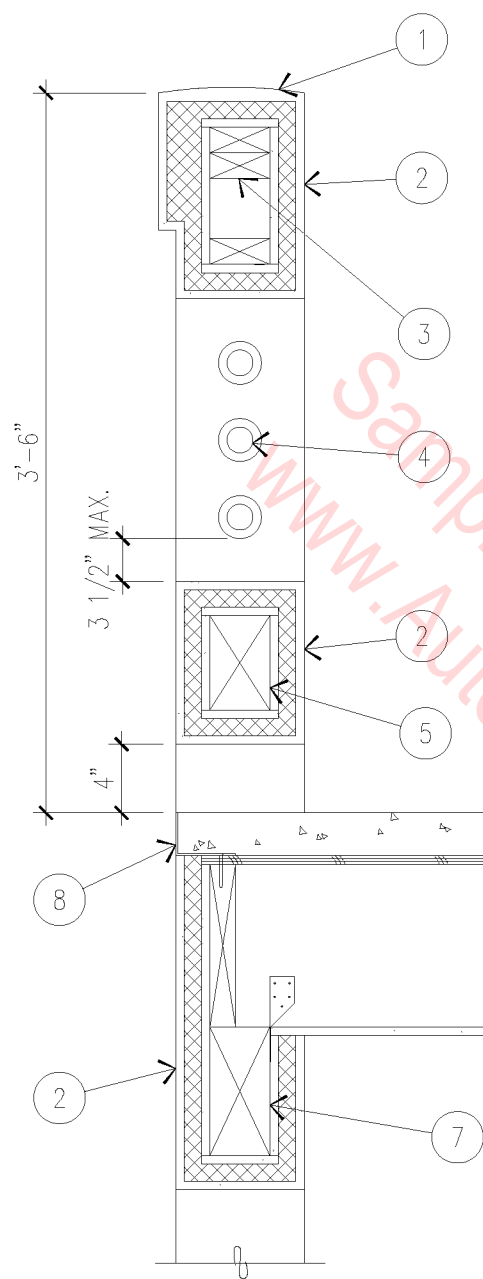
1. BATTEN TOP.
2. 1/2" STUCCO OVER 1" E.P.S. FOAM OVER 1/2" GYPSUM SHEATHING.
3. 2 X 4 FRAMING AT 16" O.C.
4. 1 1/2" ϕ TUBE STEEL.
5. 4 X 6 BEAM.
6. LIGHTWEIGHT CONCRETE OVER (2) LAYERS 15# FELT, HOT MOPPED.
7. 4 X BEAM - SEE STRUCTURAL.
8. L 3 1/2" X 2 1/2" X 1/8" CONCRETE STOP WITH 3/16" ϕ X 2" LONG LAG SCREWS AT 12" O.C.



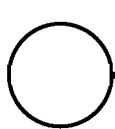
BALCONY RAILING

1" = 1'-0"

07A-3019



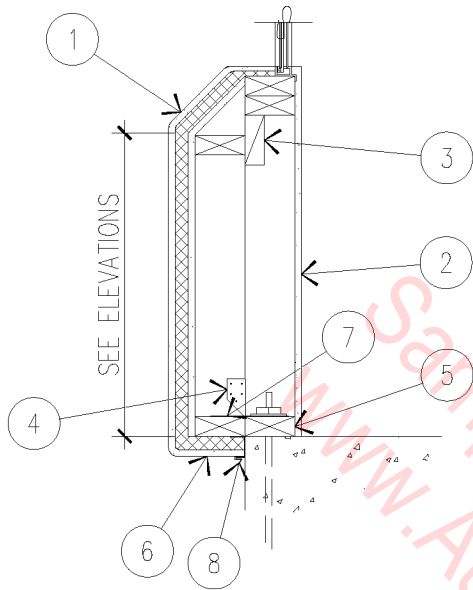
1. BATTEN TOP.
2. 1/2" STUCCO OVER 1" E.P.S. FOAM OVER 1/2" GYPSUM SHEATHING.
3. 2 X 4 FRAMING AT 16" O.C.
4. 1 1/2" ϕ TUBE STEEL.
5. 4 X 6 BEAM.
6. LIGHTWEIGHT CONCRETE OVER (2) LAYERS 15# FELT, HOT MOPPED.
7. 4 X 6 BEAM - SEE STRUCTURAL.
8. L 3 1/2" X 2 1/2" X 1/8" CONCRETE STOP WITH 3/16" ϕ X 2" LONG LAG SCREWS AT 12" O.C.



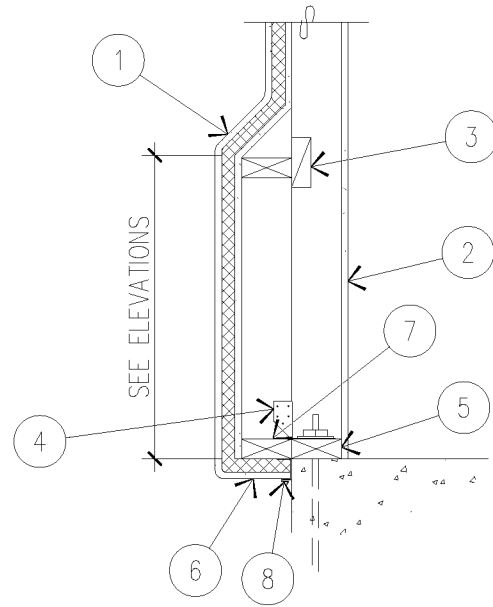
BALCONY RAILING

1" = 1'-0"

07A-3019

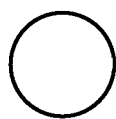


POPOUT AT WINDOW



POPOUT AT WALL

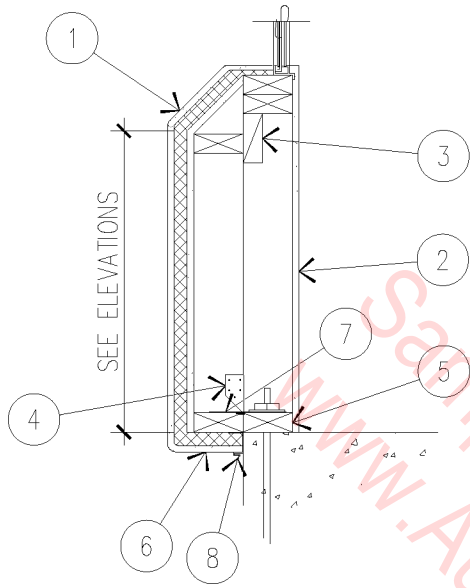
1. 5/8" STUCCO ON WIRE MESH ON 1" E.P.S. FOAM OVER 1/2" SHEATHING.
2. 1/2" GYPSUM BOARD.
3. 2 X BLOCKING.
4. HURRICANE TIE AT EACH STUD.
5. 2 X TREATED SILL PLATE.
6. ROLL STUCCO TO TERMINATE AS SHOWN.
7. STRAPPING.
8. CONTINUOUS WEEP SCREED.



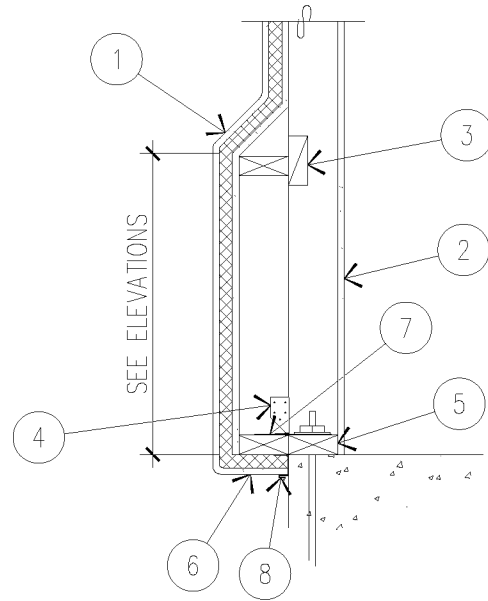
POPOUT DETAIL

3/4" = 1'-0"

07A-3020

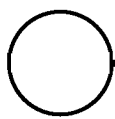


POPOUT AT WINDOW



POPOUT AT WALL

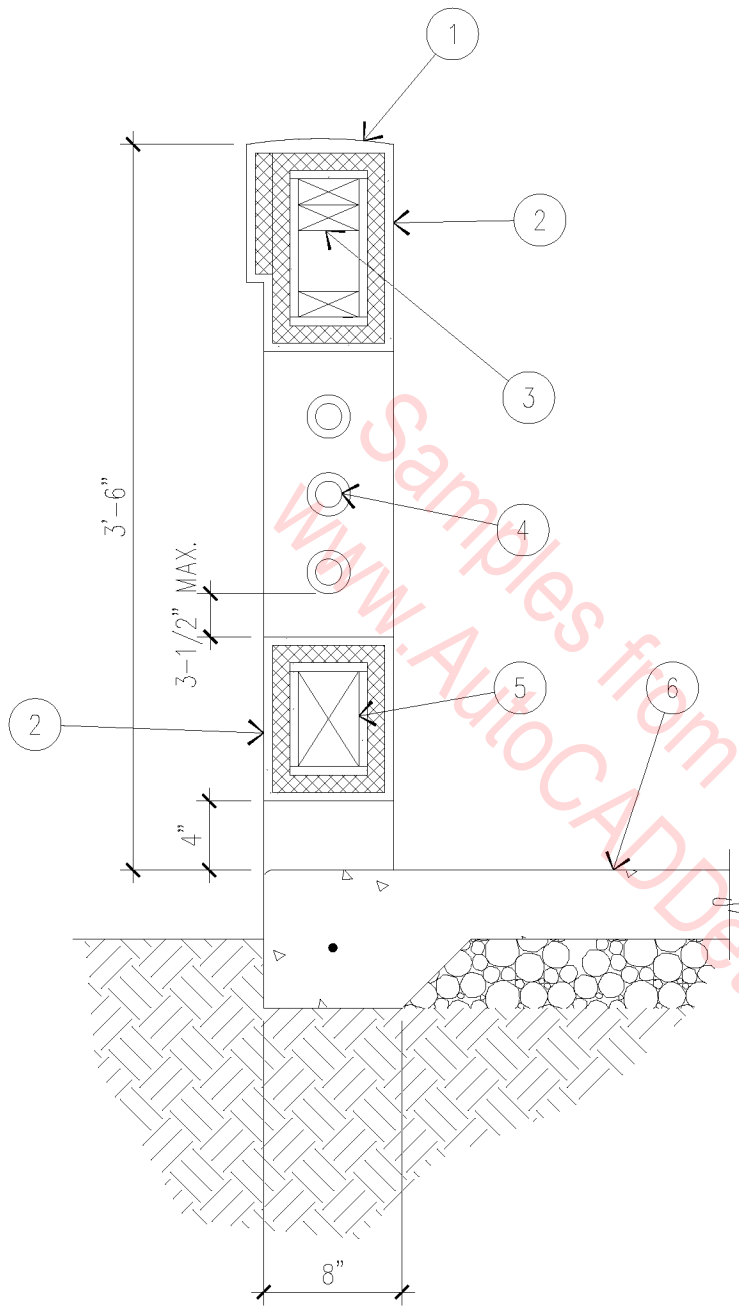
1. 5/8" STUCCO ON WIRE MESH ON 1" E.P.S. FOAM OVER 1/2" SHEATHING.
2. 1/2" GYPSUM BOARD.
3. 2 X BLOCKING.
4. HURRICANE TIE AT EACH STUD.
5. 2 X TREATED SILL PLATE.
6. ROLL STUCCO TO TERMINATE AS SHOWN.
7. STRAPPING.
8. CONTINUOUS WEEP SCREED.



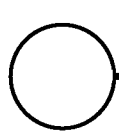
POPOUT DETAIL

3/4" = 1'-0"

07A-3020



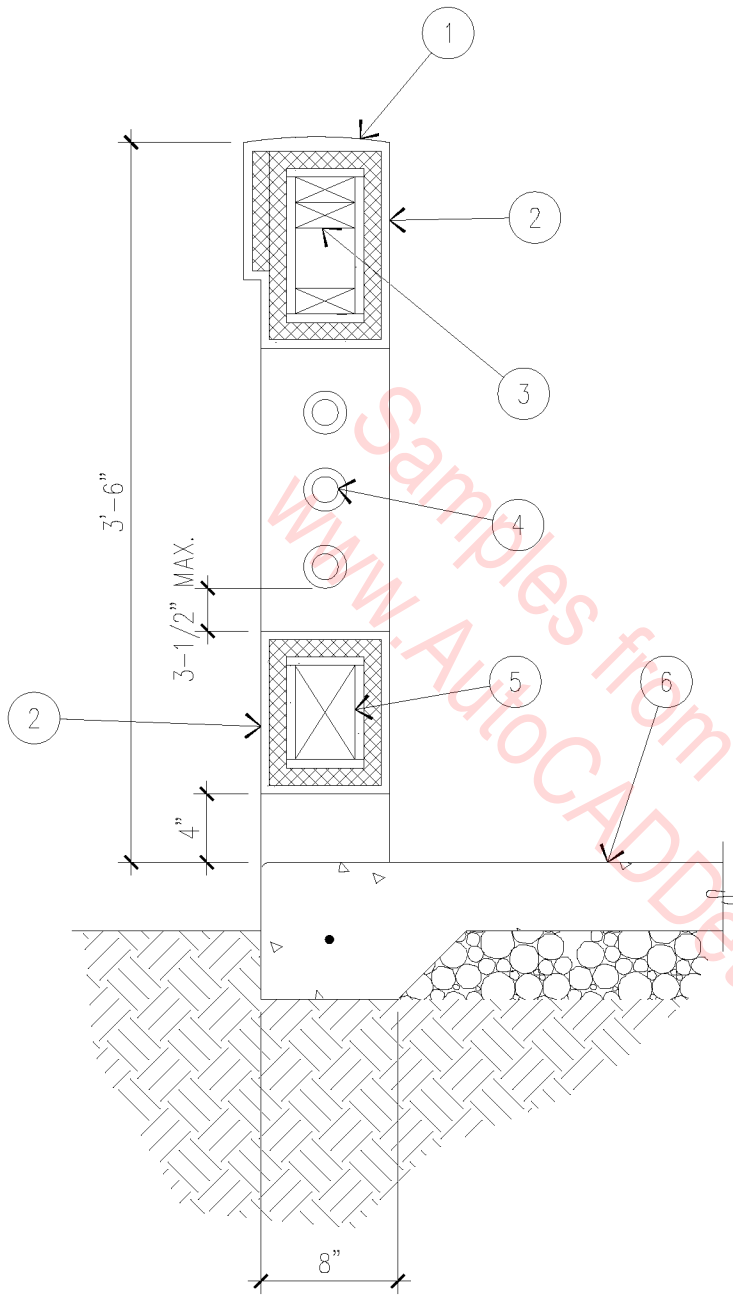
1. BATTEN TOP.
2. 1/2" STUCCO OVER 1" E.P.S. FOAM OVER 1/2" GYPSUM SHEATHING.
3. 2 X 4 FRAMING AT 16" O.C.
4. 1 1/2" Ø TUBE STEEL.
5. 4 X 6 BEAM.
6. 4" CONCRETE SLAB OVER 4" AGGREGATE BASE COURSE.



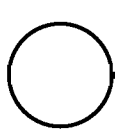
LOW WALL AT PATIO

1" = 1'-0"

07A-3021



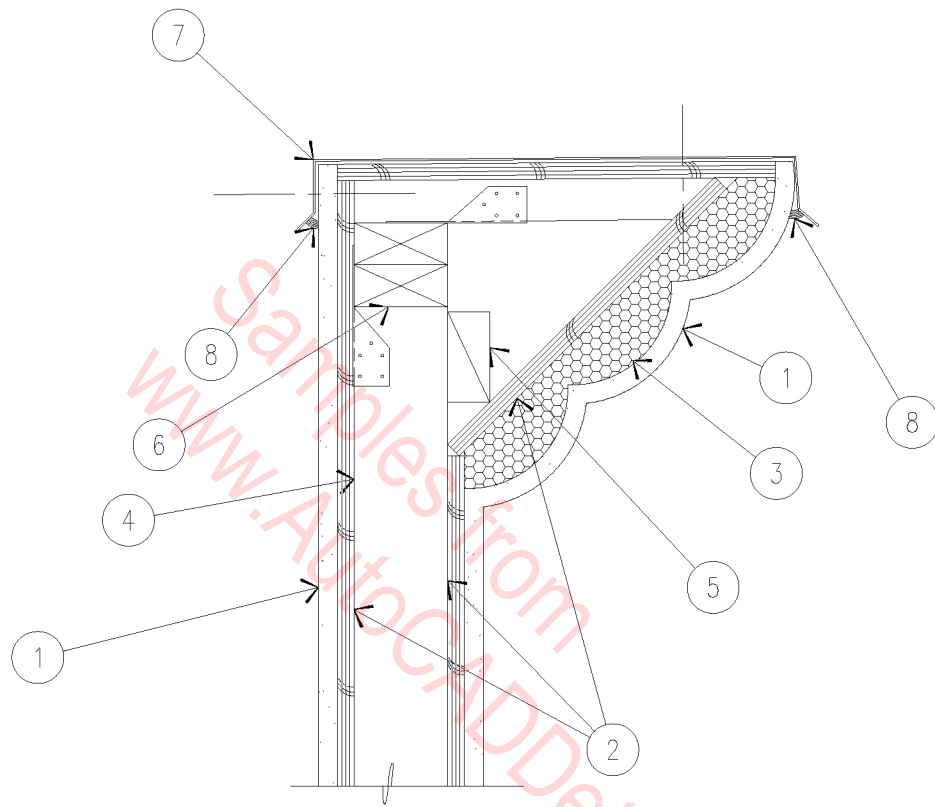
1. BATTEN TOP.
2. 1/2" STUCCO OVER 1" E.P.S. FOAM OVER 1/2" GYPSUM SHEATHING.
3. 2 X 4 FRAMING AT 16" O.C.
4. 1 1/2" Ø TUBE STEEL.
5. 4 X 6 BEAM.
6. 4" CONCRETE SLAB OVER 4" AGGREGATE BASE COURSE.



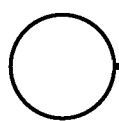
LOW WALL AT PATIO

1" = 1'-0"

07A-3021



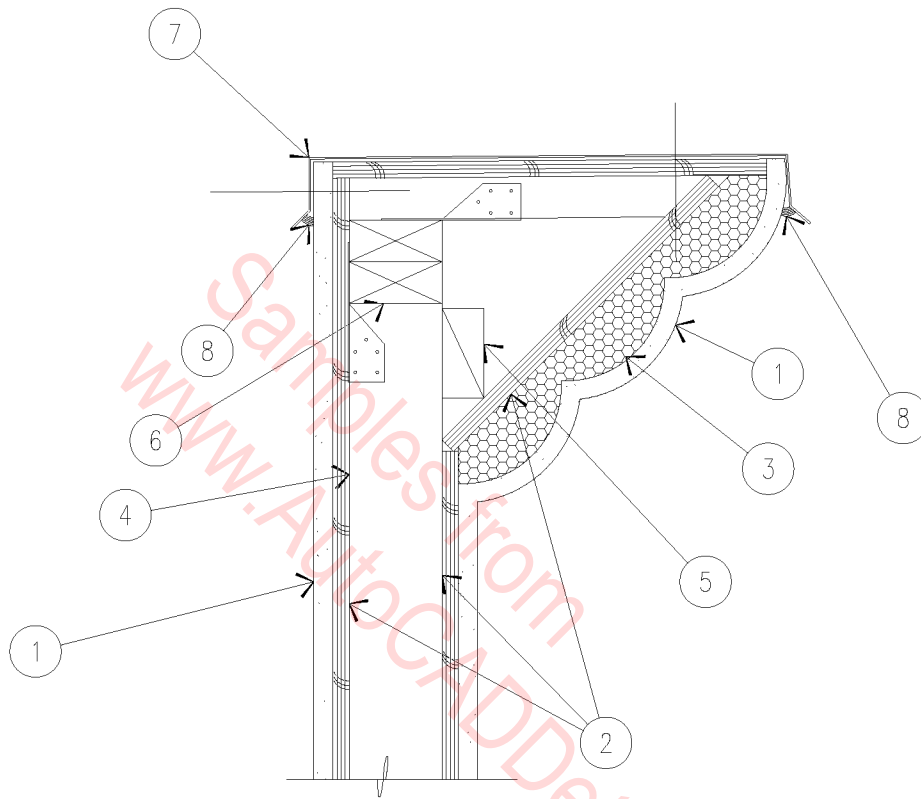
- | | |
|--------------------------|--|
| 1. STUCCO ON METAL LATH. | 6. DOUBLE TOP PLATE. |
| 2. PLYWOOD SHEATHING. | 7. SHEET METAL COPING WITH DRIP EDGE – ATTACH WITH SHEET METAL SCREWS WITH REINFORCED NEOPRENE WASHER. |
| 3. SHAPED RIGID FOAM. | 8. CONTINUOUS SILICONE SEALANT. |
| 4. STUD FRAMING. | |
| 5. 2 X BLOCKING. | |



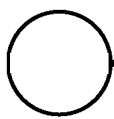
PARAPET CAP

1 1/2" = 1'-0"

07A-3022



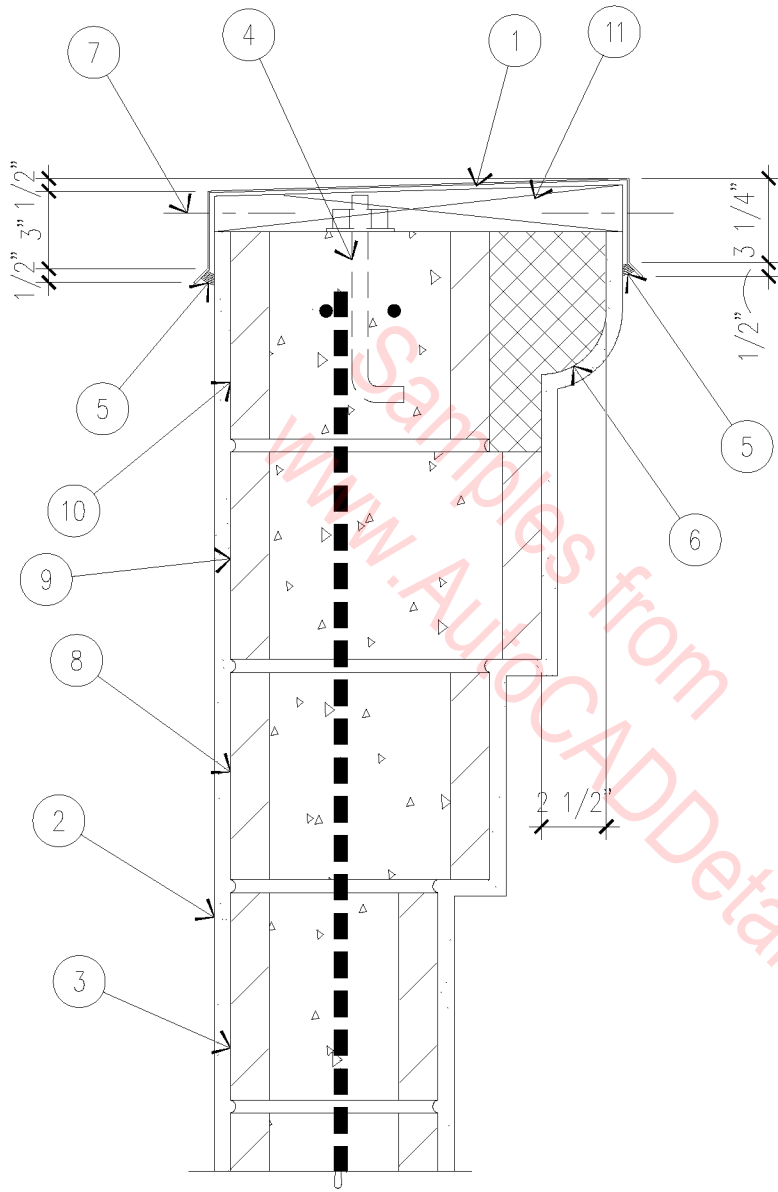
- | | |
|--------------------------|--|
| 1. STUCCO ON METAL LATH. | 6. DOUBLE TOP PLATE. |
| 2. PLYWOOD SHEATHING. | 7. SHEET METAL COPING WITH DRIP EDGE -
ATTACH WITH SHEET METAL SCREWS
WITH REINFORCED NEOPRENE WASHER. |
| 3. SHAPED RIGID FOAM. | 8. CONTINUOUS SILICONE SEALANT. |
| 4. STUD FRAMING. | |
| 5. 2 X BLOCKING. | |



PARAPET CAP

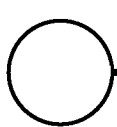
1 1/2" = 1'-0"

07A-3022



1. 24 GAUGE GALVANIZED IRON CAP FLASHING WITH DRIP EDGE.
2. STUCCO ON MASONRY.
3. 8X8X16 MASONRY WALL.
4. ANCHOR BOLT AT 72" O.C.
5. CONTINUOUS SILICONE SEALANT.
6. SHAPED RIGID FOAM "POP-OUT".
7. SCREW WITH REINFORCED NEOPRENE WASHER AT 2'-0" O.C., CAULK SCREW HEADS (TYPICAL).
8. 8X10X16 CMU COURSE.
9. 8X12X16 CMU COURSE.
10. 8X8X16 CMU COURSE.
11. SLOPED WOOD CAP.

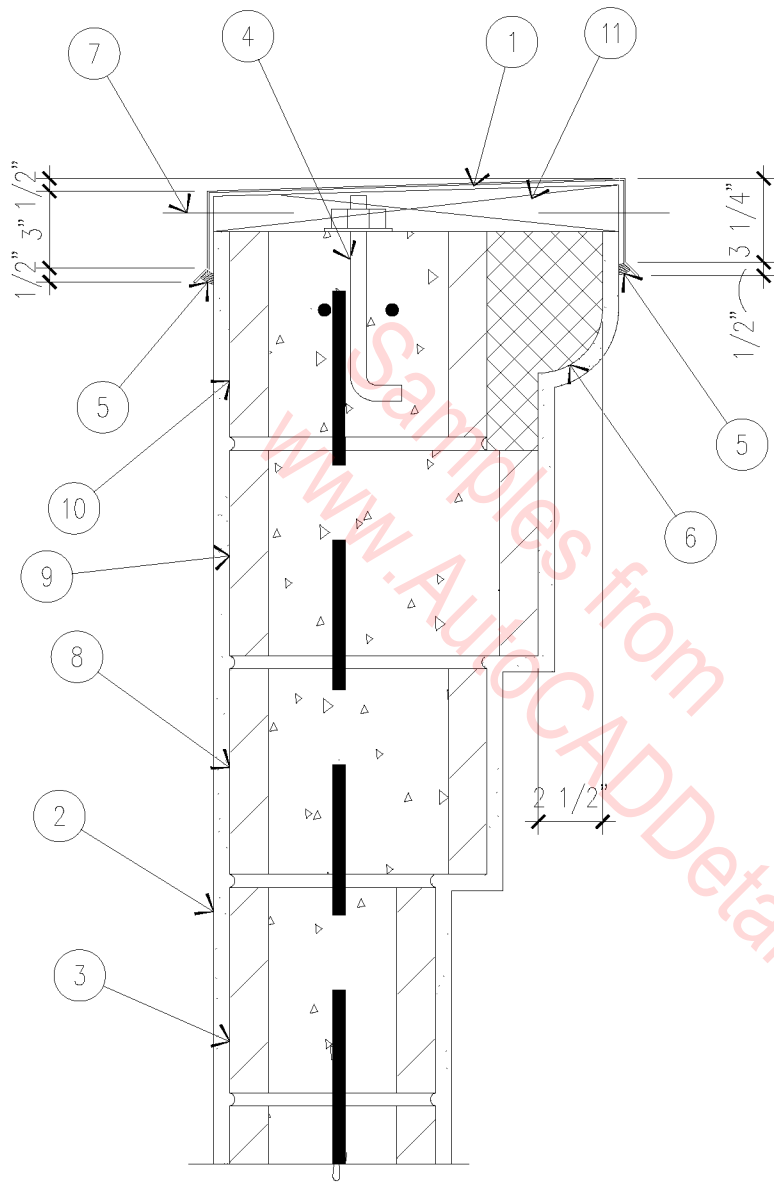
NOTE: PROVIDE ROOFING FELT UNDERLAYMENT 3" OVERLAP AT SEAMS (UNDER FLASHING).



MASONRY PARAPET CAP

1 1/2" = 1'-0"

07A-3023



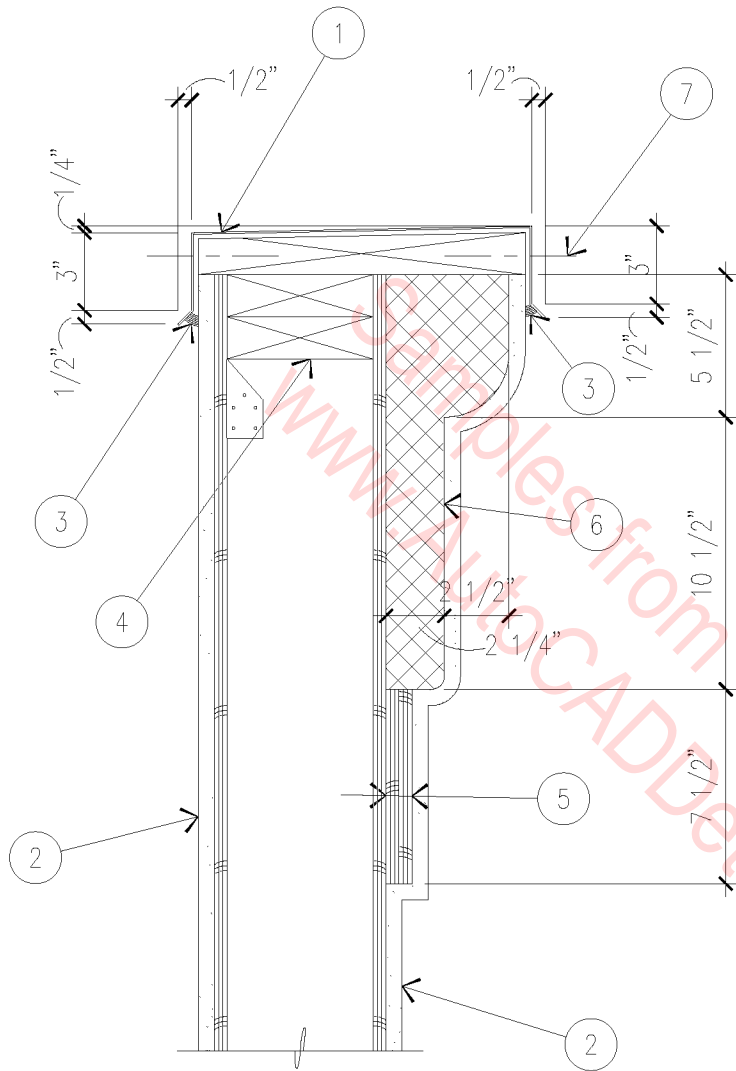
1. 24 GAUGE GALVANIZED IRON CAP FLASHING WITH DRIP EDGE.
2. STUCCO ON MASONRY.
3. 8X8X16 MASONRY WALL.
4. ANCHOR BOLT AT 72" O.C.
5. CONTINUOUS SILICONE SEALANT.
6. SHAPED RIGID FOAM "POP-OUT".
7. SCREW WITH REINFORCED NEOPRENE WASHER AT 2'-0" O.C., CAULK SCREW HEADS (TYPICAL).
8. 8X10X16 CMU COURSE.
9. 8X12X16 CMU COURSE.
10. 8X8X16 CMU COURSE.
11. SLOPED WOOD CAP.

NOTE: PROVIDE ROOFING FELT UNDERLAYMENT 3" OVERLAP AT SEAMS (UNDER FLASHING).

MASONRY PARAPET CAP

1 1/2" = 1'-0"

07A-3023



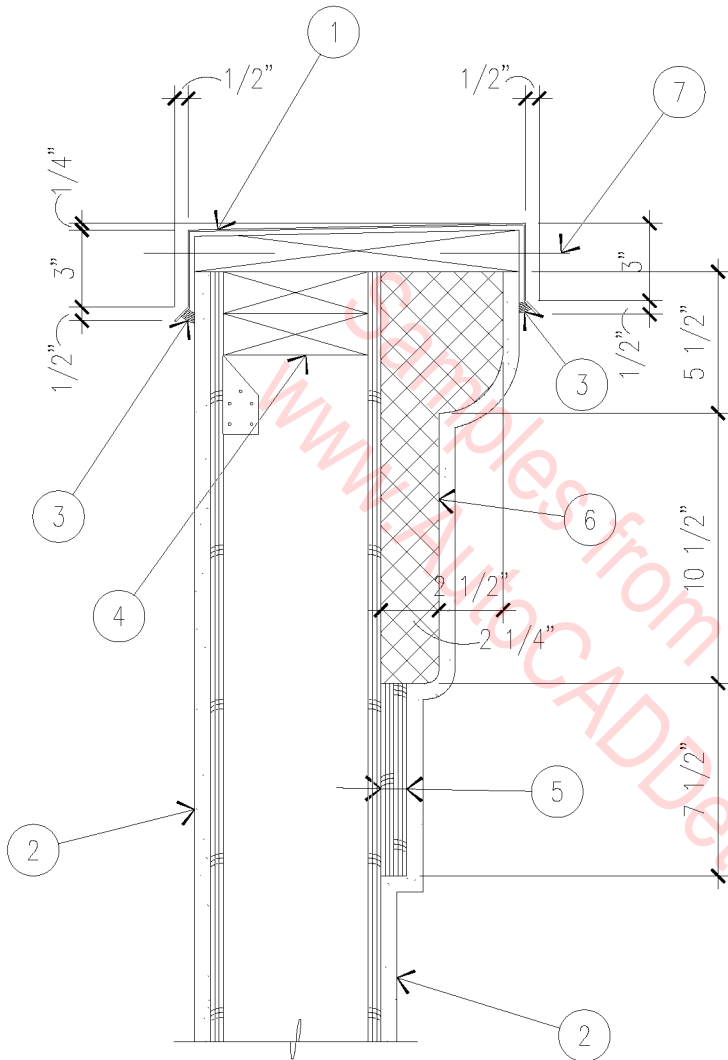
1. 24 GAUGE GALVANIZED IRON CAP FLASHING WITH DRIP EDGE.
2. STUCCO ON METAL LATH OVER 1/2" EXTERIOR SHEATHING ON WOOD FRAMING.
3. CONTINUOUS SEALANT, EACH SIDE (TYPICAL).
4. CONTINUOUS PRESSURE TREATED DOUBLE TOP PLATE.
5. (2) LAYERS 1/2" PLYWOOD.
6. SHAPED RIGID FOAM "POP-OUT".
7. SCREW WITH REINFORCED NEOPRENE WASHER AT 2'-0" O.C., CAULK SCREW HEADS (TYPICAL).

NOTE: PROVIDE ROOFING FELT UNDERLAYMENT 3" OVERLAP AT SEAMS (UNDER FLASHING).

PARAPET CAP

1 1/2" = 1'-0"

07A-3024



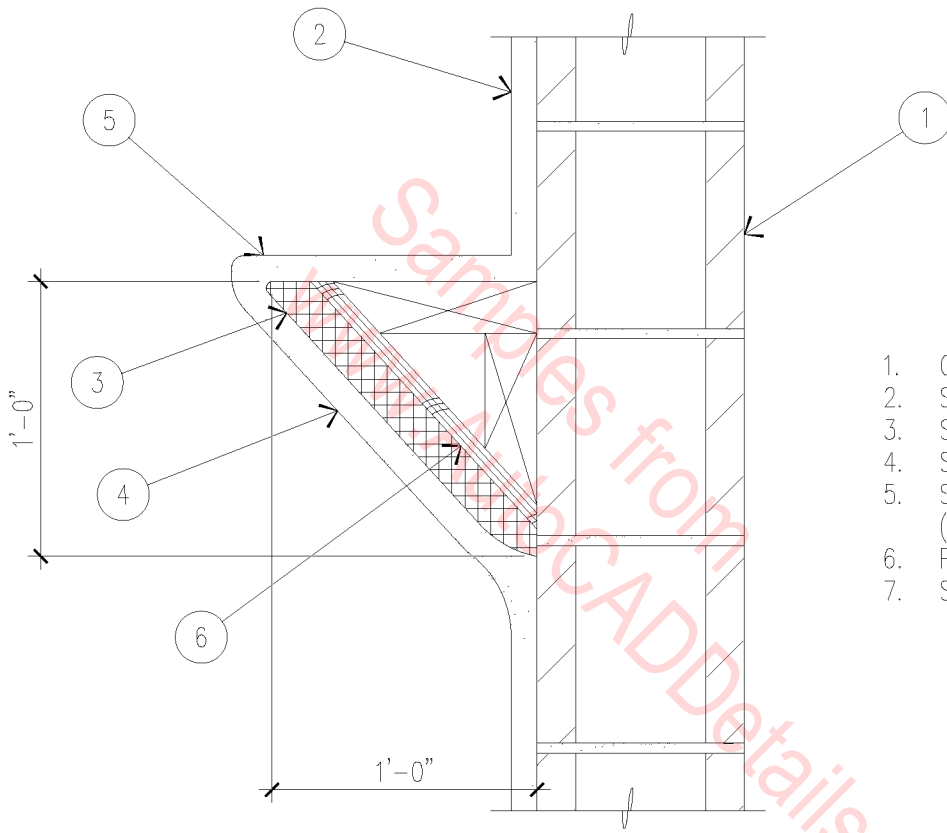
1. 24 GAUGE GALVANIZED IRON CAP FLASHING WITH DRIP EDGE.
2. STUCCO ON METAL LATH OVER 1/2" EXTERIOR SHEATHING ON WOOD FRAMING.
3. CONTINUOUS SEALANT, EACH SIDE (TYPICAL).
4. CONTINUOUS PRESSURE TREATED DOUBLE TOP PLATE.
5. (2) LAYERS 1/2" PLYWOOD.
6. SHAPED RIGID FOAM "POP-OUT".
7. SCREW WITH REINFORCED NEOPRENE WASHER AT 2'-0" O.C., CAULK SCREW HEADS (TYPICAL).

NOTE: PROVIDE ROOFING FELT UNDERLAYMENT 3" OVERLAP AT SEAMS (UNDER FLASHING).

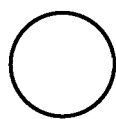
PARAPET CAP

1 1/2" = 1'-0"

07A-3024



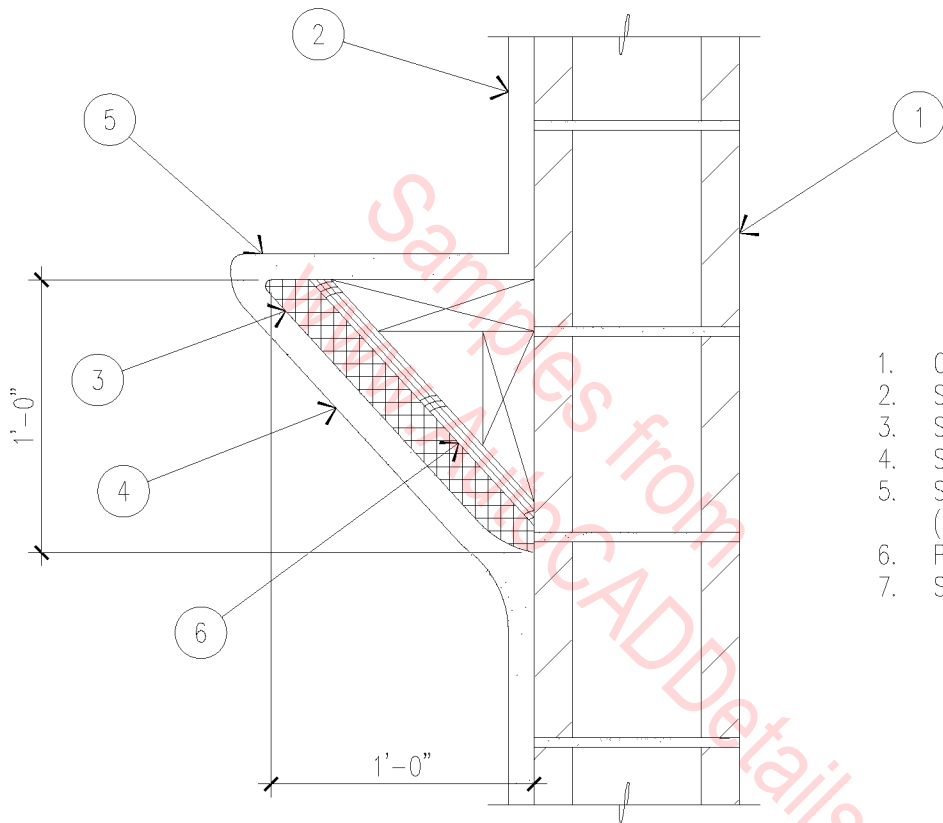
1. CMU WALL.
2. STUCCO ON CMU.
3. SHAPED RIGID FOAM.
4. STUCCO ON LATH.
5. SLOPE TO DRAIN, APPLY (3) COATS WATERSEAL.
6. PLYWOOD SHEATHING.
7. SHAPED 2 X NAILER.



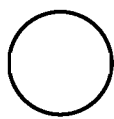
EXTERIOR TRIM

1 1/2" = 1'-0"

07A-3025



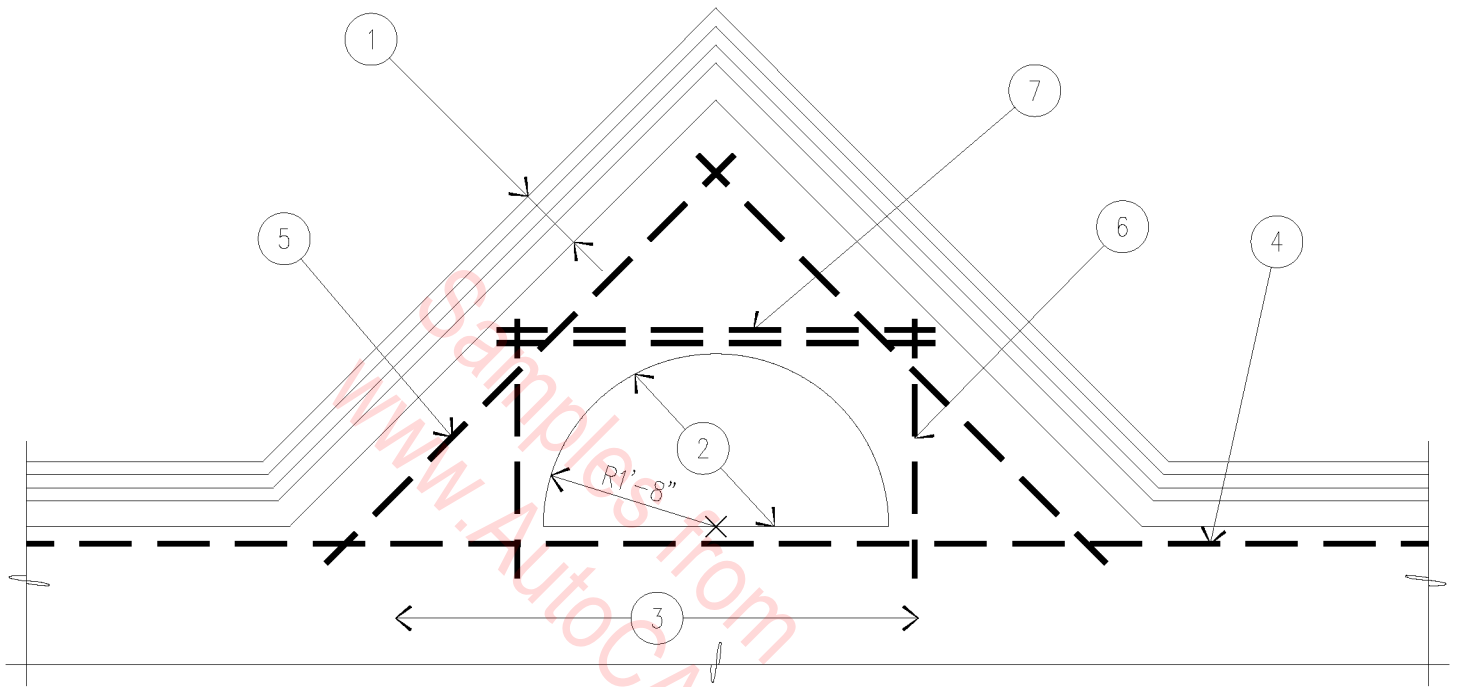
1. CMU WALL.
2. STUCCO ON CMU.
3. SHAPED RIGID FOAM.
4. STUCCO ON LATH.
5. SLOPE TO DRAIN, APPLY (3) COATS WATERSEAL.
6. PLYWOOD SHEATHING.
7. SHAPED 2 X NAILER.



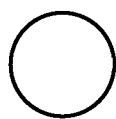
EXTERIOR TRIM

1 1/2" = 1'-0"

07A-3025



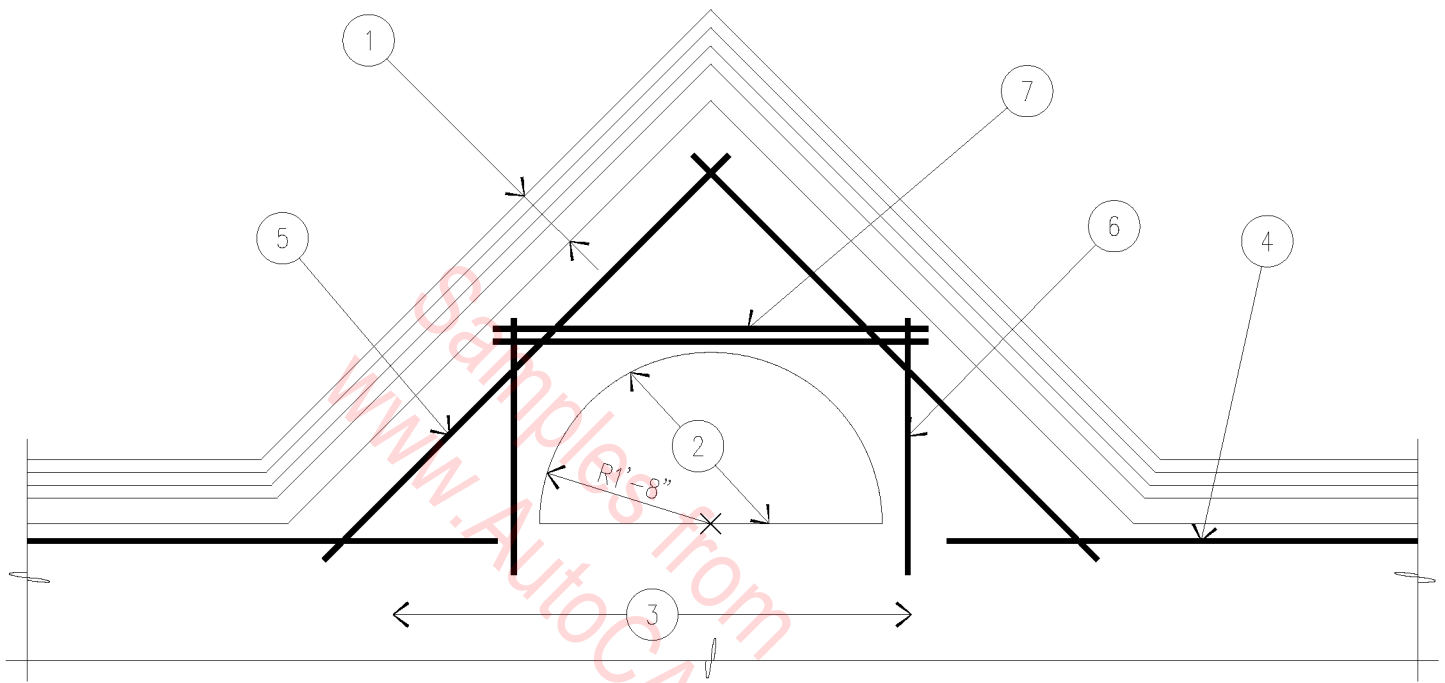
1. FOAM "POP-OUT" WITH CEMENT STUCCO FINISH OVER METAL LATH.
2. 1/2 ROUND MASONRY OPENING.
3. CEMENT STUCCO OVER MASONRY.
4. (1) #5 REBAR HORIZONTAL - FULL WIDTH OF WALL.
5. (1) #5 REBAR DIAGONALLY AT EACH SIDE OF OPENING.
6. (1) #5 REBAR VERTICALLY AT EACH SIDE OF OPENING.
7. (2) #5 REBAR HORIZONTAL ABOVE OPENING.



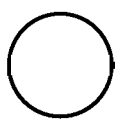
PEDIMENT REINFORCING

1/2" = 1'-0"

07A-3027



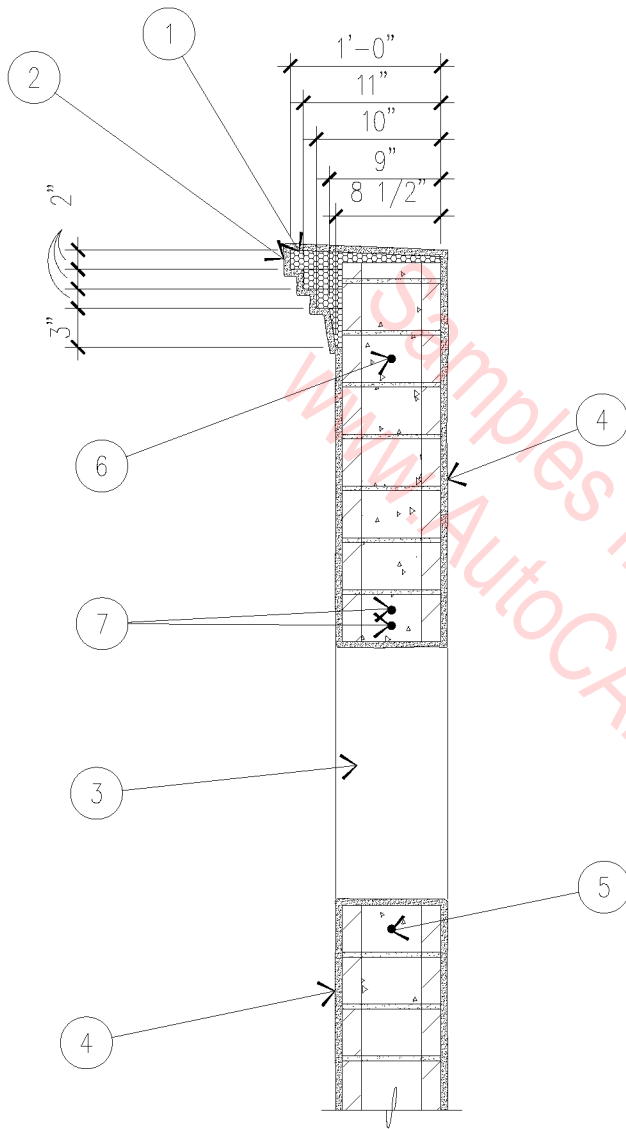
1. FOAM "POP-OUT" WITH CEMENT STUCCO FINISH OVER METAL LATH.
2. 1/2 ROUND MASONRY OPENING.
3. CEMENT STUCCO OVER MASONRY.
4. (1) #5 REBAR HORIZONTAL - FULL WIDTH OF WALL.
5. (1) #5 REBAR DIAGONALLY AT EACH SIDE OF OPENING.
6. (1) #5 REBAR VERTICALLY AT EACH SIDE OF OPENING.
7. (2) #5 REBAR HORIZONTAL ABOVE OPENING.



PEDIMENT REINFORCING

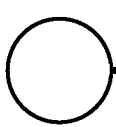
1/2" = 1'-0"

07A-3027



1. 1 1/2" THICK RIGID INSULATION.
2. CEMENT STUCCO FINISH OVER METAL LATH.
3. 1/2 ROUND MASONRY OPENING.
4. CEMENT STUCCO OVER MASONRY.
5. (1) #5 REBAR HORIZONTAL - FULL WIDTH OF WALL.
6. (1) #5 REBAR DIAGONALLY AT EACH SIDE OF OPENING.
7. (2) #5 REBAR HORIZONTAL ABOVE OPENING.

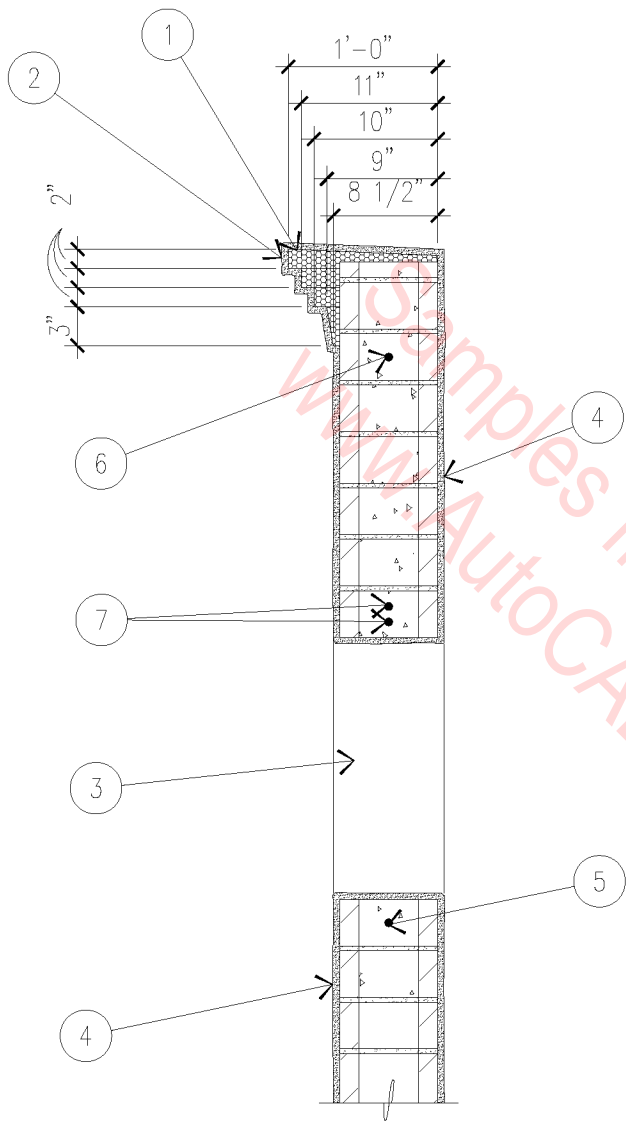
Samples from
 www.AutoCADDetails.net



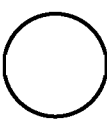
PEDIMENT SECTION

3/4" = 1'-0"

07A-3028



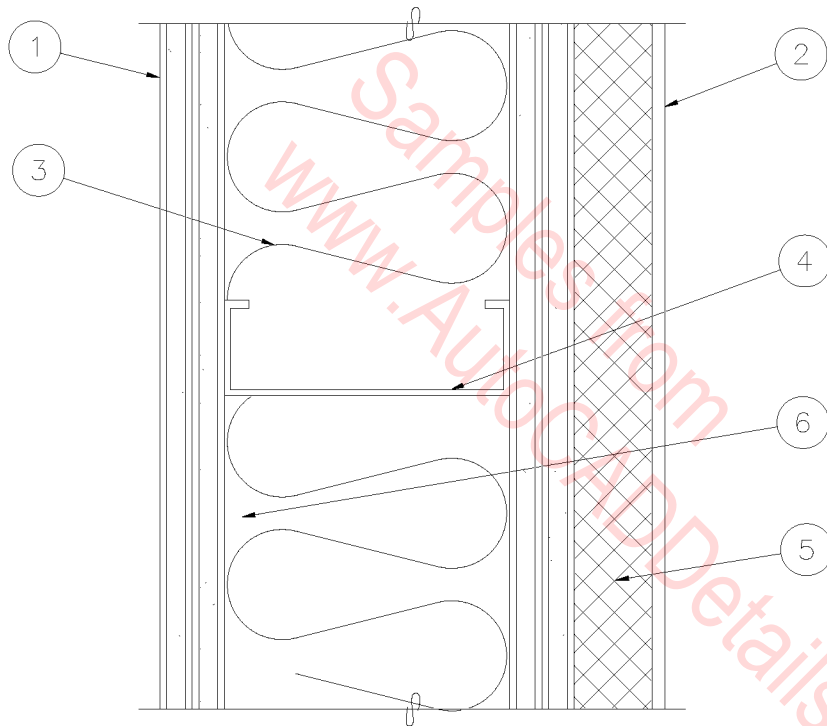
1. 1 1/2" THICK RIGID INSULATION.
2. CEMENT STUCCO FINISH OVER METAL LATH.
3. 1/2 ROUND MASONRY OPENING.
4. CEMENT STUCCO OVER MASONRY.
5. (1) #5 REBAR HORIZONTAL - FULL WIDTH OF WALL.
6. (1) #5 REBAR DIAGONALLY AT EACH SIDE OF OPENING.
7. (2) #5 REBAR HORIZONTAL ABOVE OPENING.



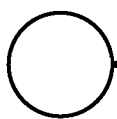
PEDIMENT SECTION

3/4" = 1'-0"

07A-3028



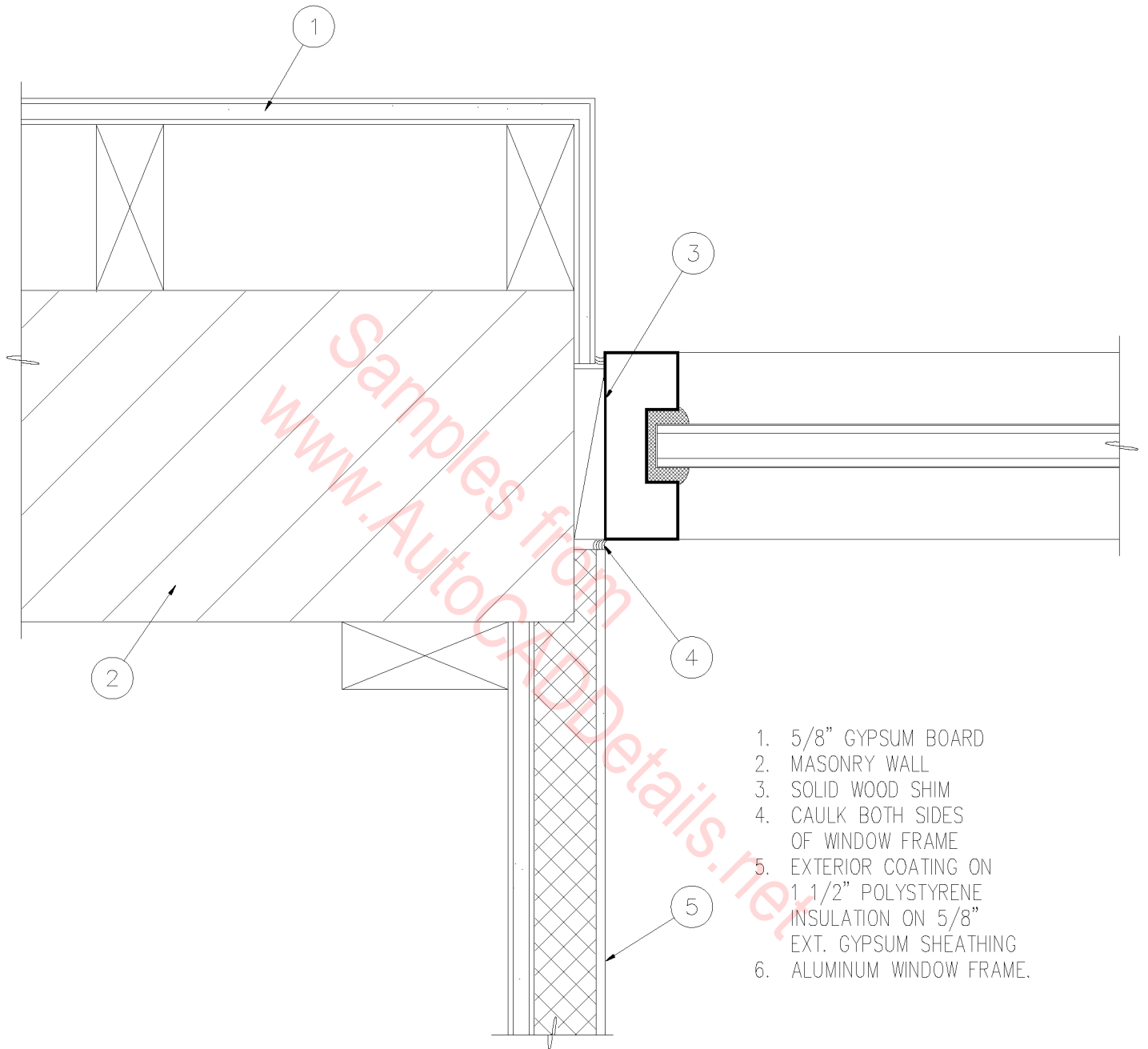
1. (2) LAYERS 5/8" TYPE "X" GYPSUM BOARD.
2. SYNTHETIC STUCCO.
3. 5 1/2" BATT INSULATION.
4. 6" METAL STUDS.
5. 1 1/2" POLYSTYRENE INSULATION BOARD MECHANICALLY FASTENED AND GLUED.
6. 4 MIL. POLY VAPOR BARRIER.



2 HOUR EXTERIOR WALL

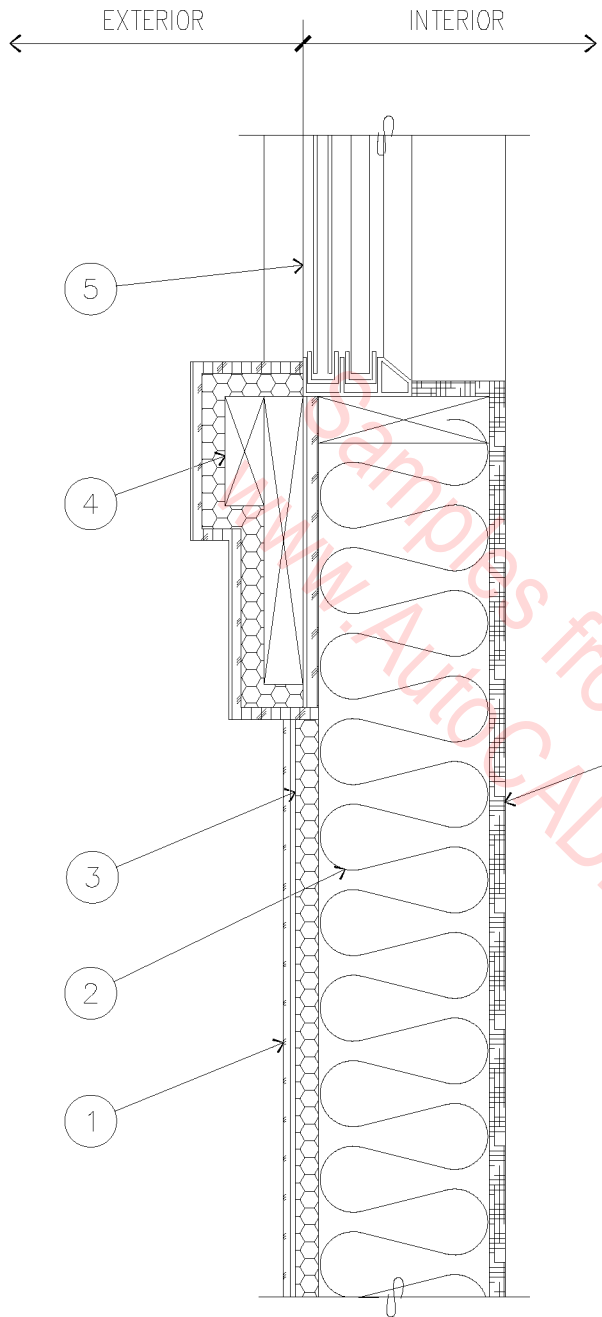
SCALE: 3" = 1'-0"

07A-4001

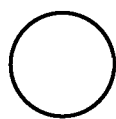


○ WINDOW JAMB
 SCALE: 3" = 1'-0"

07A-4002



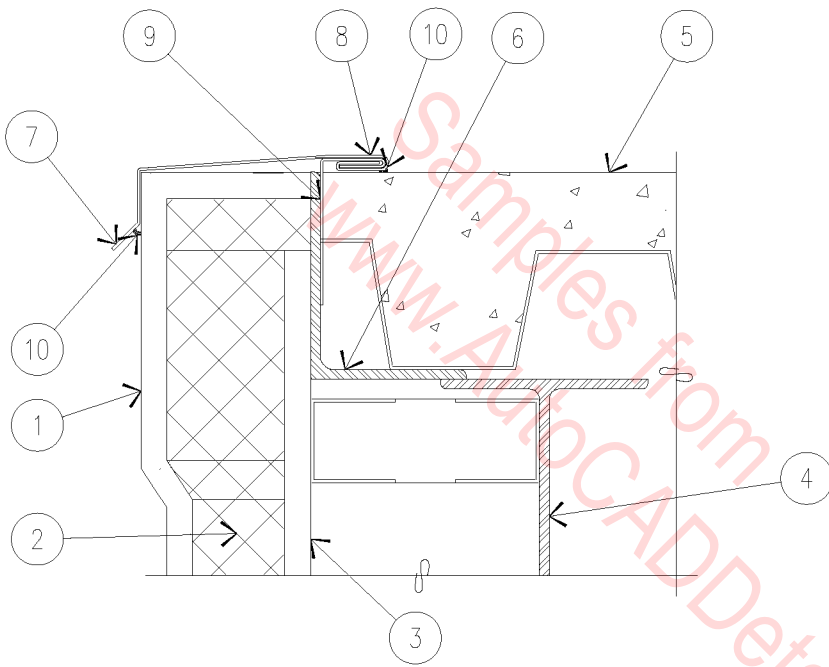
1. SYNTHETIC STUCCO APPLIED TO WIRE MESH, 3/4" R5.4 FOAM AND 3/8" WAFERBOARD SHEATHING - PAINTED.
2. R-19 FIBERGLASS INSULATION.
3. 2 X 6 STUD WALL @ 16" O.C.
4. 5/4" X 3 1/2" ON 5/4" X 9 1/2" HARDBOARD TRIM.
5. WINDOW WITH 'L' FLASHING AT TOP (TYP.) - SEE WINDOW SCHEDULE.
6. 1/2" GYPSUM BOARD.



STUCCO LEDGE

1 1/2" = 1'-0"

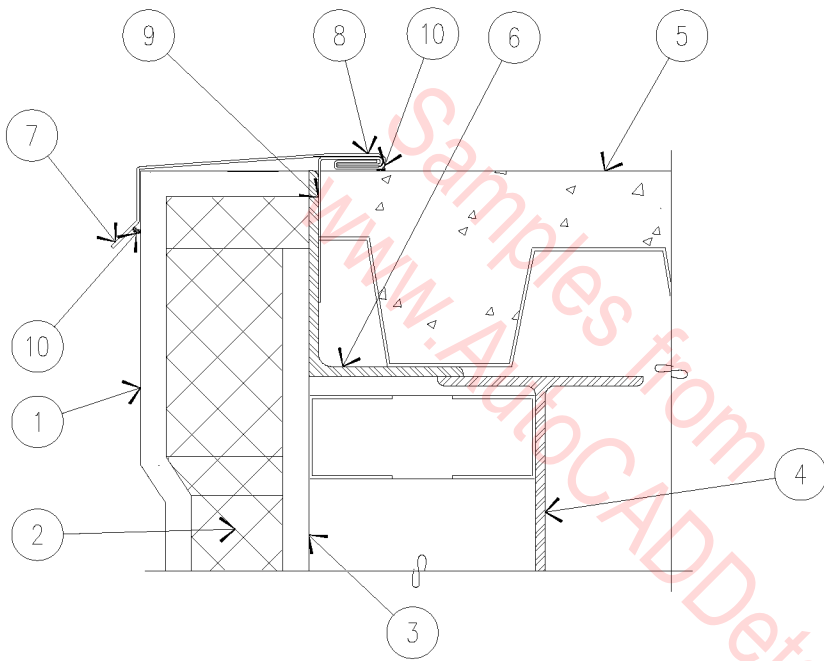
07A-4003



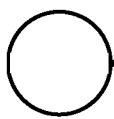
1. E.I.F.S.
2. RIGID INSULATION.
3. 1/2" GYPSUM SHEATHING.
4. WIDE FLANGE BEAM.
5. COMPOSITE ROOF DECK.
6. RETAINING ANGLE.
7. CONTINUOUS FLASHING WITH DRIP EDGE.
8. CONTINUOUS HEMMED SEAM.
9. CONTINUOUS SHEET METAL RETAINING FLANGE.
10. CONTINUOUS SEALANT.


ROOF PARAPET
 3" = 1'-0"

07A-4004



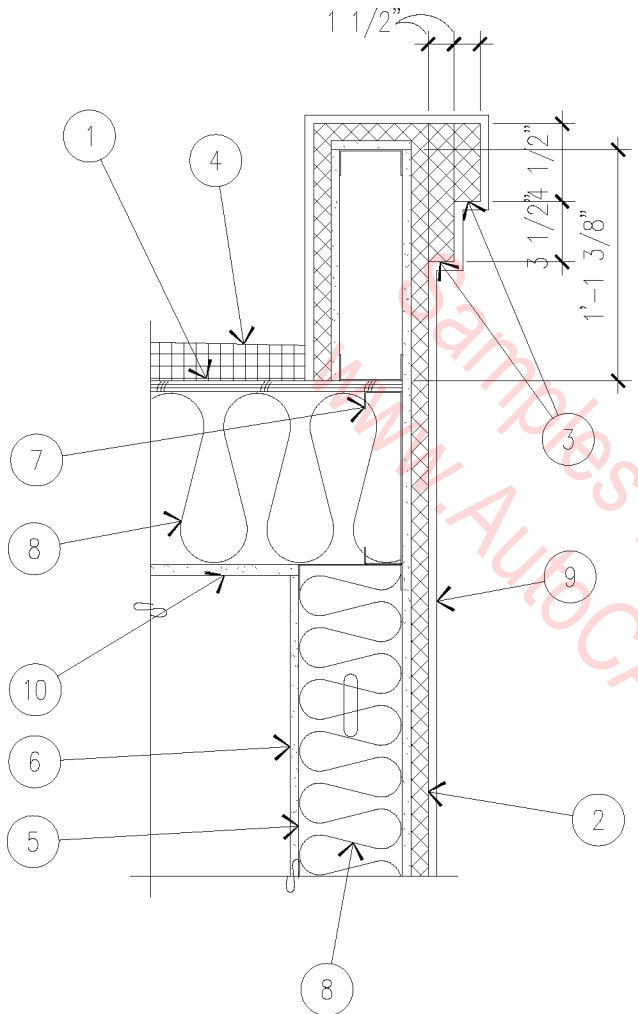
1. E.I.F.S.
2. RIGID INSULATION.
3. 1/2" GYPSUM SHEATHING.
4. WIDE FLANGE BEAM.
5. COMPOSITE ROOF DECK.
6. RETAINING ANGLE.
7. CONTINUOUS FLASHING WITH DRIP EDGE.
8. CONTINUOUS HEMMED SEAM.
9. CONTINUOUS SHEET METAL RETAINING FLANGE.
10. CONTINUOUS SEALANT.



ROOF PARAPET

3" = 1'-0"

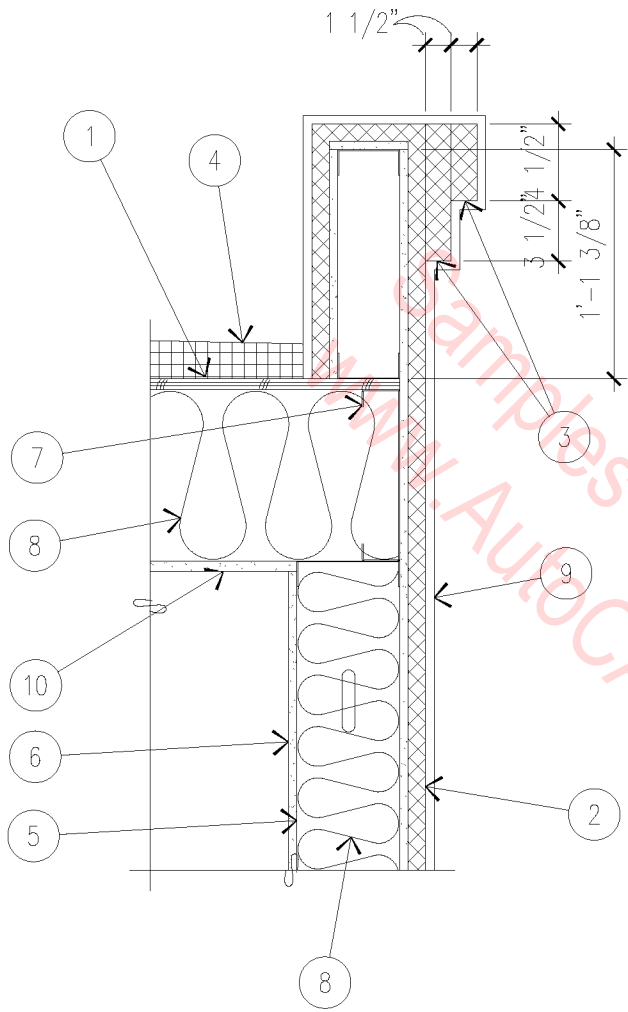
07A-4004



1. 5/8" A.P.A. RATED SHEATHING.
2. 1" STYROFOAM.
3. 1 1/2" STYROFOAM.
4. BUILT-UP ROOFING.
5. 6" METAL STUD WALL.
6. 1/2" GYPSUM BOARD.
7. ROOF JOISTS - SEE STRUCTURAL.
8. BATT INSULATION.
9. 1/2" STUCCO.
10. 5/8" GYPSUM BOARD.

○ PARAPET WALL
 1" = 1'-0"

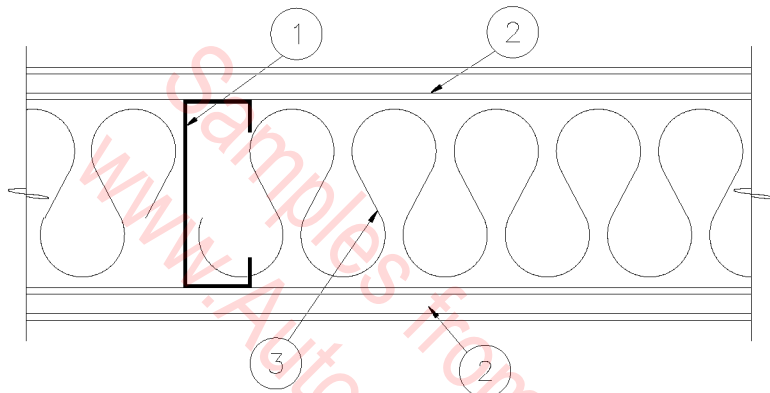
07A-4005



1. 5/8" A.P.A. RATED SHEATHING.
2. 1" STYROFOAM.
3. 1 1/2" STYROFOAM.
4. BUILT-UP ROOFING.
5. 6" METAL STUD WALL.
6. 1/2" GYPSUM BOARD.
7. ROOF JOISTS - SEE STRUCTURAL.
8. BATT INSULATION.
9. 1/2" STUCCO.
10. 5/8" GYPSUM BOARD.

○ PARAPET WALL
 1" = 1'-0"

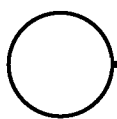
07A-4005



GA FILE NO. WP 1073
STC : 49

1. 3-5/8" METAL STUDS AT 16" O.C.
2. 5/8" TYPE 'X' GYPSUM BOARD.
3. 3-1/2" ACOUSTICAL INSULATION BATTS.

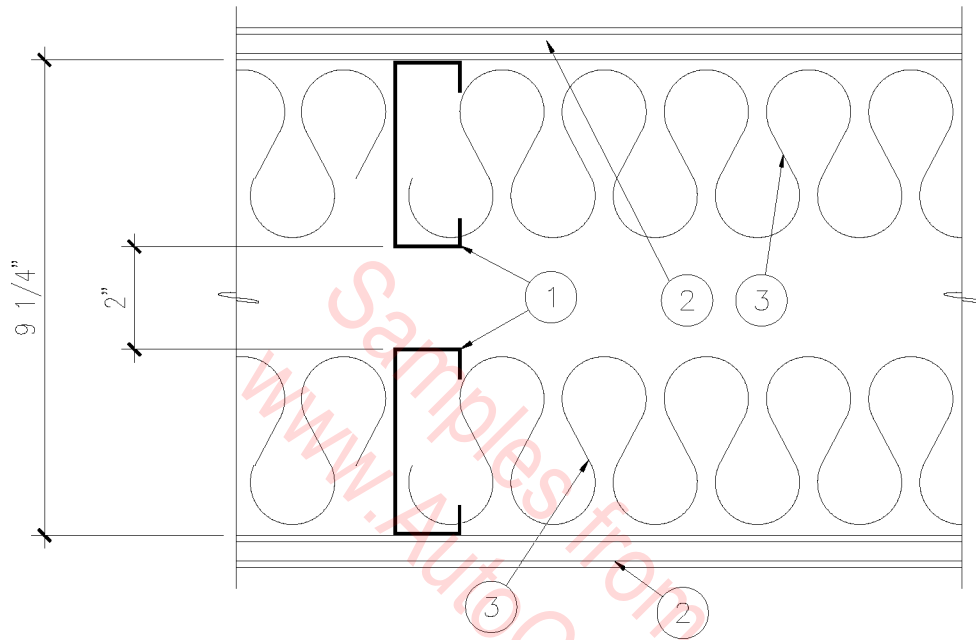
NOTE: CONSTRUCT ACCORDING TO STANDARDS AND DETAILS
FOR SOUND INSULATION FROM GYPSUM
ASSOCIATION DESIGN MANUAL 12TH EDITION (GA-600-88)



SOUND RESISTIVE WALL

SCALE: 3" = 1'-0"

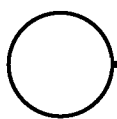
07A-5001



CONSTRUCTION SIMILAR TO
GA FILE NO. WP 5005
STC : 64

1. 3-5/8" METAL STUDS AT 16" O.C.
2. 5/8" TYPE 'X' GYPSUM BOARD.
3. 3-1/2" ACOUSTICAL INSULATION BATTS.

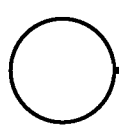
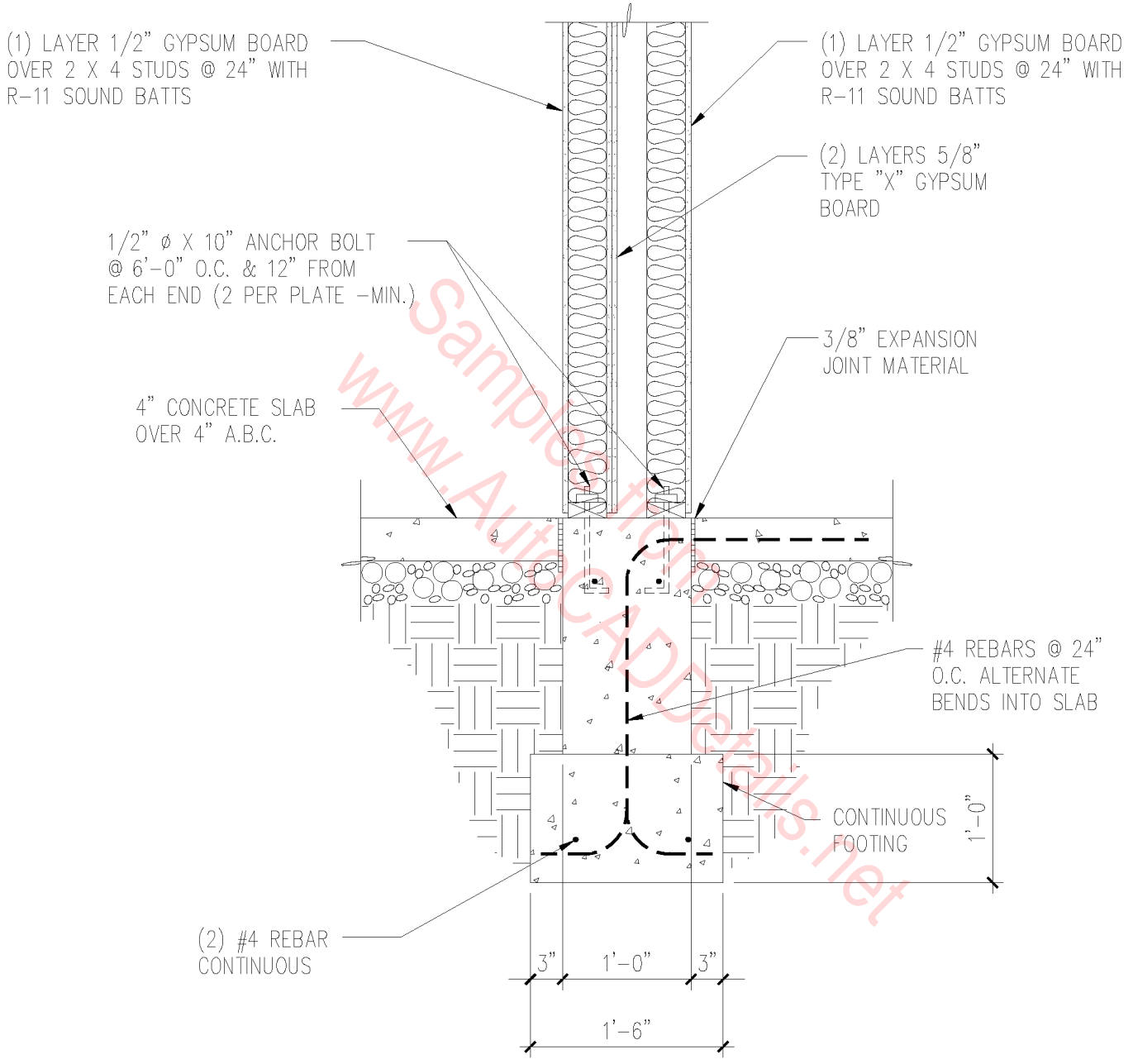
NOTE: CONSTRUCT ACCORDING TO STANDARDS AND DETAILS
FOR SOUND INSULATION FROM GYPSUM
ASSOCIATION DESIGN MANUAL 12TH EDITION (GA-600-88).



SOUND RESISTIVE WALL

SCALE: 3" = 1'-0"

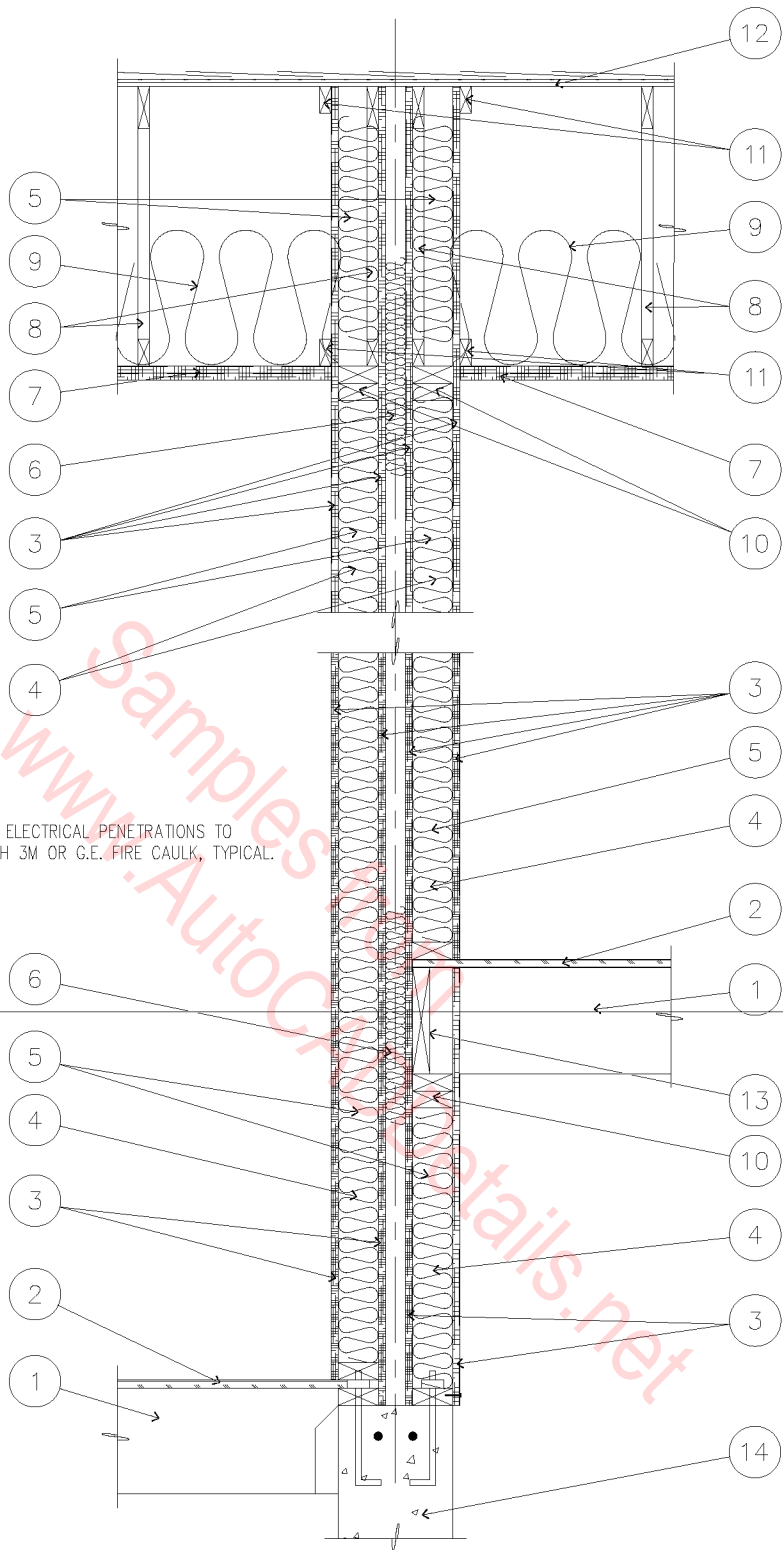
07A-5002



FDN. @ PARTY WALL

3/4" = 1'-0"

07A-5003



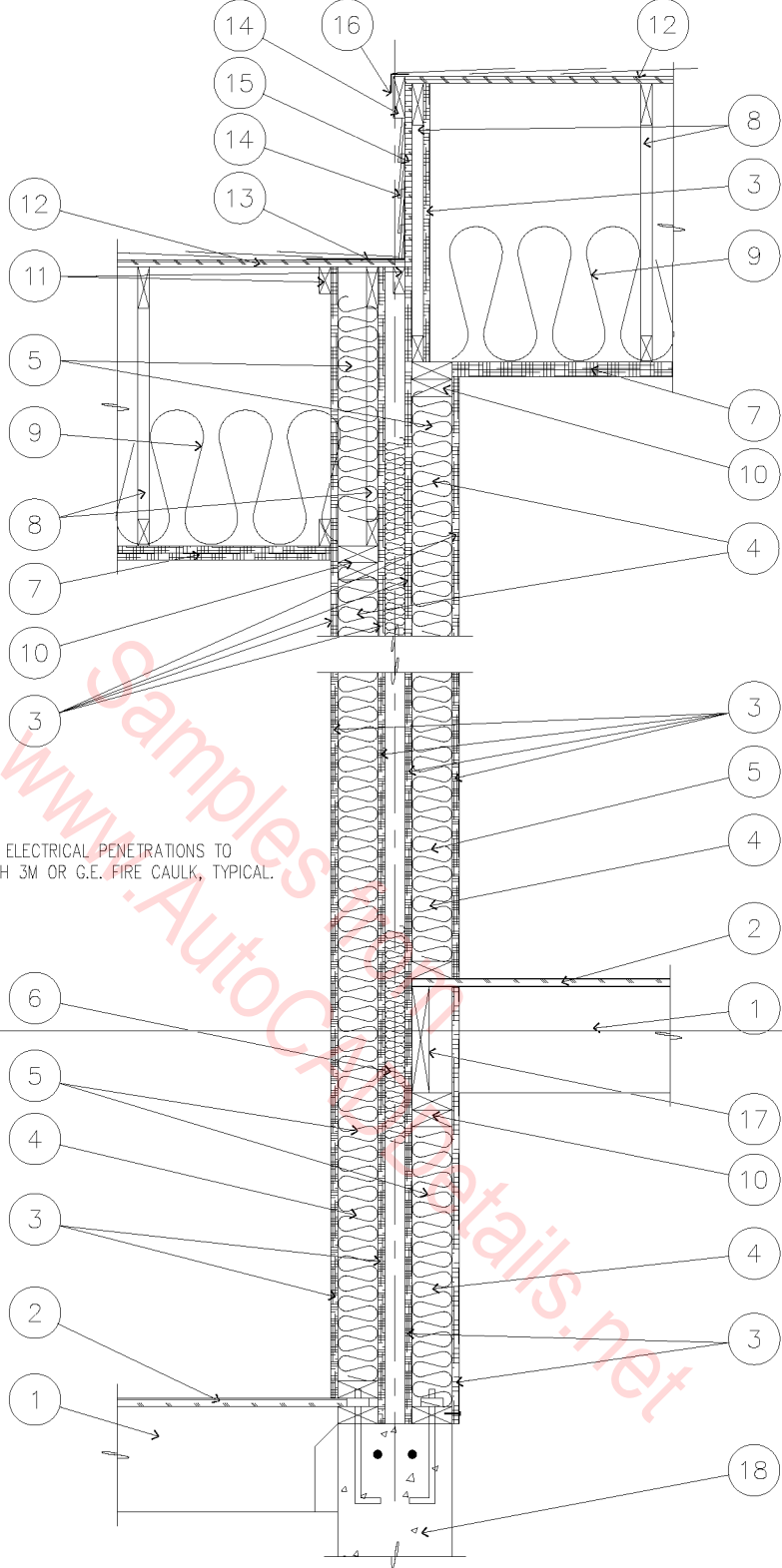
NOTE:
 PLUMBING AND ELECTRICAL PENETRATIONS TO
 BE SEALED WITH 3M OR G.E. FIRE CAULK, TYPICAL.

- | | |
|---|---|
| 1. 2 X 10 FLOOR JOISTS @ 16" O.C. | 9. R-30 CEILING INSULATION. |
| 2. 3/4" A.P.A. RATED FLOOR SHEATHING. | 10. (2) 2 X 6'S. |
| 3. 5/8" TYPE 'X' GYPSUM BOARD. | 11. 2 X BLOCKING. |
| 4. 2 X 6 STUD WALL @ 16" O.C. | 12. ASPHALT SHINGLES ON (1) LAYER OF #15
FELT ON 1/2" A.P.A. RATED ROOF SHEATHING. |
| 5. R-19 FIBERGLASS INSULATION. | 13. 2 X 10 RIM JOIST. |
| 6. FIRE STOP INSULATION ST, 8" O.C. EACH WAY. | 14. 10" CONCRETE STEM WALL. |
| 7. (2) LAYERS OF 5/8" TYPE 'X' GYPSUM BOARD. | |
| 8. PRE-ENGINEERED, PRE-FABRICATED ROOF
TRUSS - SEE FRAMING PLAN. | |

(2) 1 HOUR AREA
 SEPARATION WALL

1" = 1'-0"

07A-5004



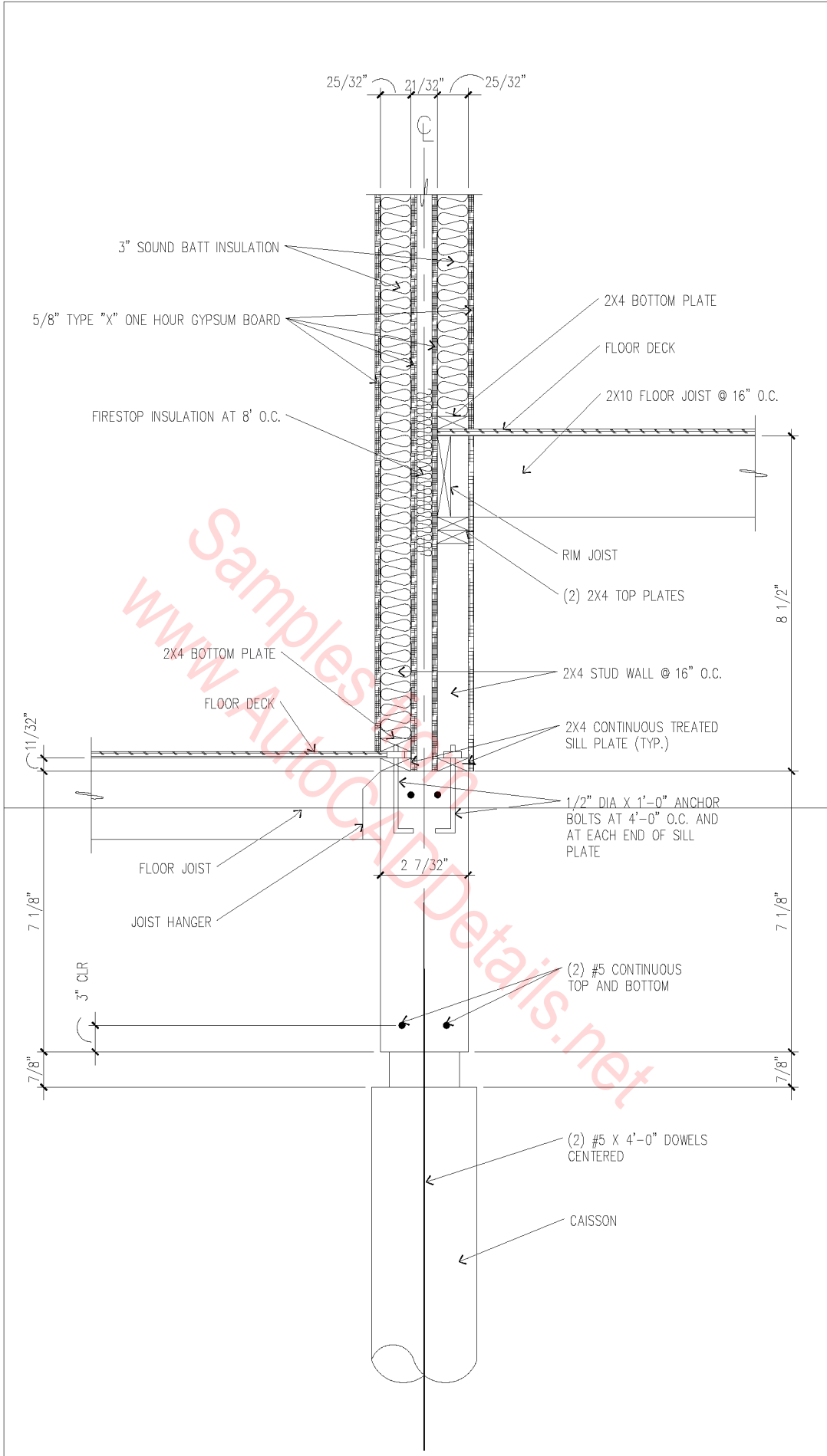
NOTE:
 PLUMBING AND ELECTRICAL PENETRATIONS TO
 BE SEALED WITH 3M OR G.E. FIRE CAULK, TYPICAL.

- | | |
|---|---|
| 1. 2 X 10 FLOOR JOISTS @ 16" O.C. | 10. (2) 2 X 6'S. |
| 2. 3/4" A.P.A. RATED FLOOR SHEATHING. | 11. 2 X BLOCKING. |
| 3. 5/8" TYPE 'X' GYPSUM BOARD. | 12. ASPHALT SHINGLES ON (1) LAYER OF #15
FELT ON 1/2" A.P.A. RATED ROOF SHEATHING. |
| 4. 2 X 6 STUD WALL @ 16" O.C. | 13. 24 GA. GALVANIZED METAL FLASHING. |
| 5. R-19 FIBERGLASS INSULATION. | 14. 5/4" X 3 1/2" HARDBOARD TRIM - PAINTED. |
| 6. FIRE STOP INSULATION ST, 8' O.C. EACH WAY. | 15. 1/2" GYPSUM BOARD. |
| 7. (2) LAYERS OF 5/8" TYPE 'X' GYPSUM BOARD. | 16. 24 GA. GALVANIZED METAL DRIP EDGE. |
| 8. PRE-ENGINEERED, PRE-FABRICATED ROOF
TRUSS - SEE FRAMING PLAN. | 17. 2 X 10 RIM JOIST. |
| 9. R-30 CEILING INSULATION. | 18. 10" CONCRETE STEM WALL. |

(2) 1 HOUR AREA
 SEPARATION WALL

1" = 1'-0"

07A-5005



(2) 1 HOUR
SEPARATION WALLS



3/4" = 1'-0"

07A-5006